



University of
East London

Year of
Science

INFORMATION ADVICE AND GUIDANCE SERVICE

UNIVERSITY OF EAST LONDON

JASBIR PANESAR

j.k.panesar@uel.ac.uk

UNIVERSITY OF EAST LONDON



University of
East London

Pioneering Futures since 1898

University of
the Year 2025



1st in London,
1st in England,
3rd in the UK

for Graduates' Overall
Positivity 2024



Highest ranked,
most improved
in the UK

Now 9th in London

* Using Times Higher methodology for
institutions with greater than 1,000
respondents

The
Guardian
University Guide 2025

Careers positioning: key messages

We are ‘careers-first’.

Our goal is to prepare students for quality careers with skills, connections and support in close collaboration with industry.

We are focused on emerging sectors and the ‘careers of the future’ – ensuring we keep pace with the continuous next of the 5th Industrial Revolution.

By empowering our students and working with employers to fill skills gaps, we’re building a future economy that is sustainable, equitable and open to all.



In the **top 10%** of the sector for improvement in graduate employment
OfS 2022



4th in the UK in student startups and social enterprise
HEBCI 2022



Over **2,500** employer partners



Pioneering ‘Diversity of Thought’ programme and ‘Mental Wealth’ module



University of
East London

Year of
Science

Stratford Campus

- Multicultural University with students from over 135 countries.
- University in East London has three campuses - Stratford, Docklands and University Square Stratford.
- There is onsite accommodation at the Docklands campus.





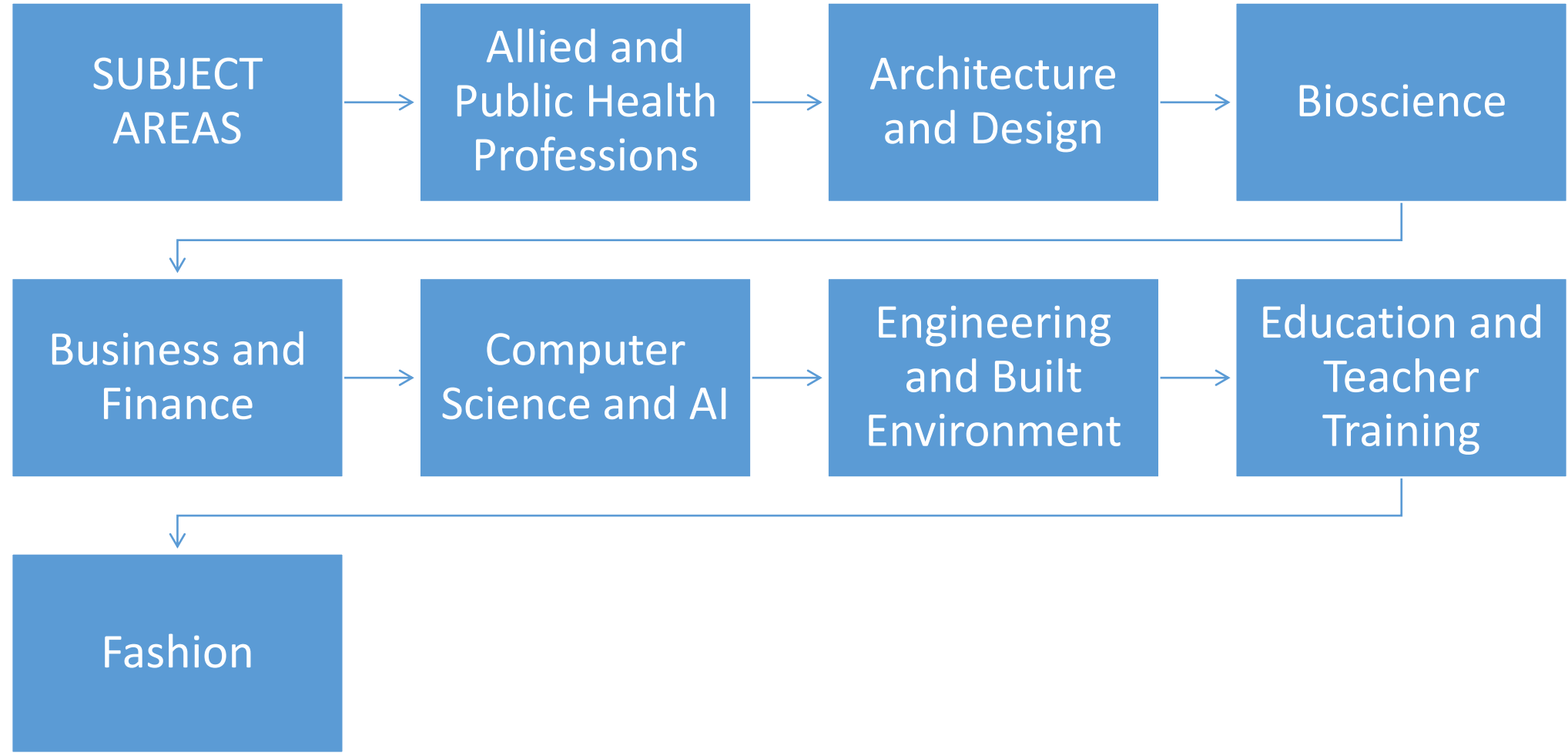
University of
East London

Year of
Science

Information Advice and Guidance Service

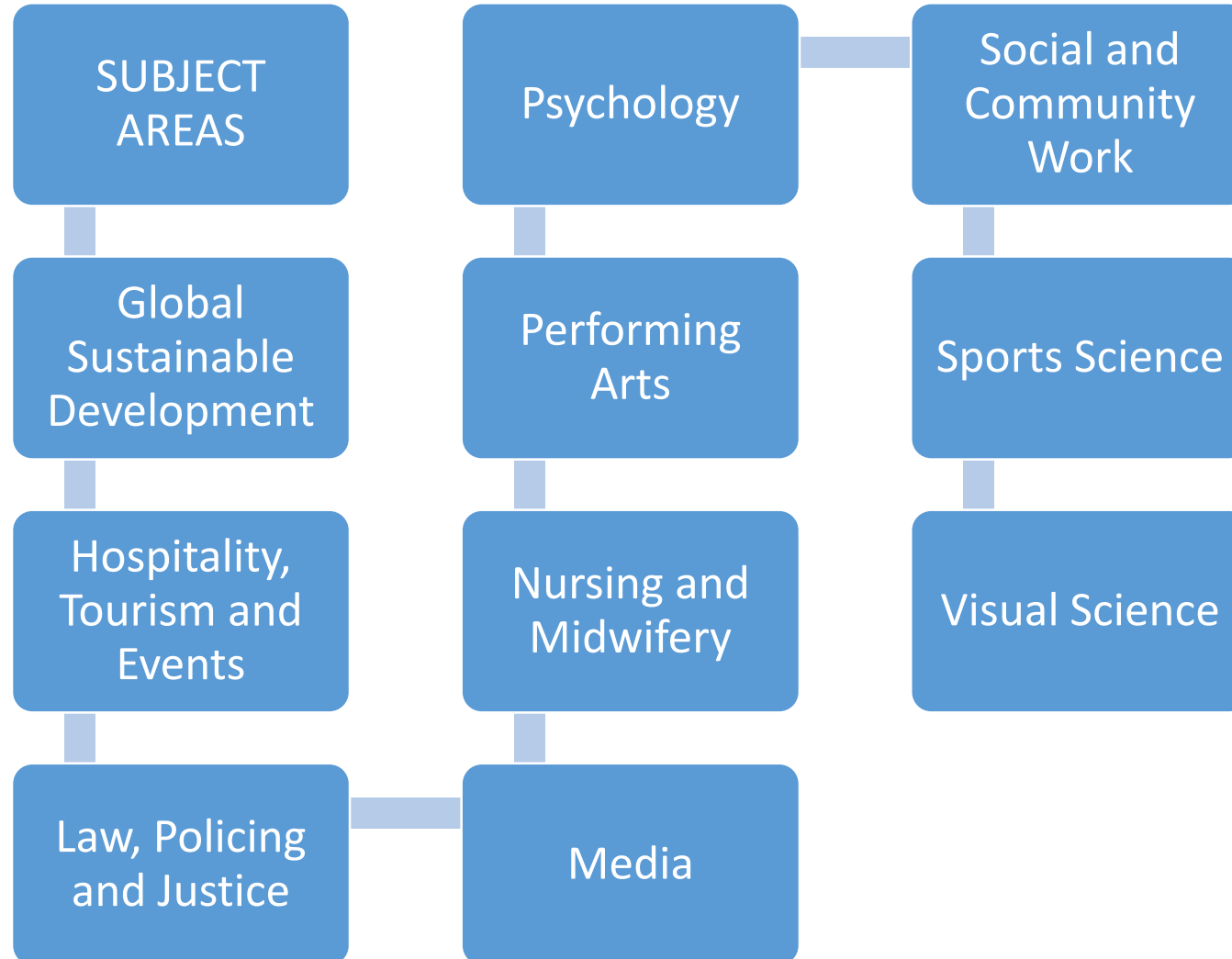
- Advice on education progression at all levels and careers
- Provide guidance on equivalence of overseas qualifications
- Advice on application process and personal statements
- E-guidance IAG – advisors@uel.ac.uk
- Liaison on your behalf with admissions, Student Services (counselling, dyslexia and disability), academic tutors and Student Money Advice Team (student finance)







Full time and Part time



UNIVERSITY OF EAST LONDON

University of East London |Pioneering Futures
(uel.ac.uk)

Prospect students tend to 18 years upwards for higher education

Young age is accepted ie 16-17 years, but guardian will sign paperwork to accept responsibility

Advise to apply by age of 60 years as there could be changes to undergraduate student loan

Those aged 60 over cannot receive student loan.

Entry Requirements

Undergraduate : most courses 112 UCAS points and for a few 120 UCAS points (level 3 ie. A levels, BTEC)

English and maths i.e GCSE grade 4 or above, functional skills literacy and numeracy level 2

Postgraduate: Bachelor's degree with minimum second class (2.2) or equivalent in any subject

English – GCSE grade 4, functional skills literacy level 2, ILETS and for some maths GCSE grade 4 or above

Overseas qualifications and other professional courses can be considered

COURSE FEES

Undergraduate course programmes: overall £9,250 (full time and part time study individual module fee will be charged)

Postgraduate courses fees vary from subject to subject (based on full time and for part time individual modules taken will be charged):

Masters of Business Administration – 18 months £13,080

MA Early Childhood Studies – 12 months £8,160

MSc Construction Engineering Management – 18 months £1080

PGCE Teaching – 12 months £9,250

MSc Public Health – 12 months £10,440

Student Finance for England provides student loan and maintenance loan for undergraduate and postgraduate study (Full time and Part time)

UNIVERSITY OF EAST LONDON - STUDENT SERVICES

[Student Support | University of East London \(uel.ac.uk\)](#)

Academic Support

Assigned a personal tutor to assist with academic support

The Student Hub deals helps with enquiries as a central point for support

Former and current students provide academic support

Workshops – IT, academic writing, maths

Student Wellbeing Team

Provides advise on many emotional and wellbeing issues and make referrals to specialist agencies

daily drop-in advice sessions at Docklands and Stratford campuses

Confidential counselling services, offering short-term support

Liaison with mental health professionals and external referral agencies

An online mental health and wellbeing service.

Wellbeing Service team, while our Disability and Dyslexia Service provides support to disabled students and those with specific learning difficulties.



Disability and Dyslexia Service – What do we provide?

- Provide advice, information and guidance to disabled students.
- Assist with applying for disability-related government funding (e.g., DSA)
- Arrange support and reasonable adjustments for your course, for example exam arrangements (extra time, access to PC and assistive technology)
- Provide ongoing support with disability-related queries.
- Offer a screening and referral process for SpLD diagnostic assessments, autism



Who do we support?

We can support students with diagnostic evidence of the following conditions:

- Neurodivergent Conditions (Dyslexia, ADHD, Autism)
- Deaf or Hearing loss
- Blind or Vision loss
- Physical Disabilities
- Mental Health Conditions (Anxiety & Depression, Schizophrenia)
- Long Term Health Conditions (Diabetes, fibromyalgia)
- Cancer



DDT Appointments Registration:

- To discuss your access requirements and put together a support plan
- We require diagnostic evidence and your consent to share information

Drop- in:

- To discuss disability-related queries (adjustments not in place, DSA query)
- For students already registered with DDT

Screening Feedback:

- To discuss results of screenings and possible next steps
- Need to have already completed the online SpLD screenings



What to expect from your registration appointment?

Put together a Teaching and Learning Support Requirements form (TLSR), including adjustments for:

Exams: extra time, access to a laptop and assistive technology

Coursework: certificates, one-week extension

Library: extended loans, access to the AT room

In-class: access to learning materials in advance, permission to record lectures

Presentations: presenting to a small group, presenting online via Teams

How can you contact us?

Contact the Student Hub for an appointment:

- By phone - 0208 223 4444
- Email via student account: ddac@uel.ac.uk

At the point of booking students can request their appointment as follows:

- Telephone
- Microsoft Teams
- Face to Face (Stratford and Docklands)



- Information on UEL
 - Undergraduate open day - 16th October 2024 [Undergraduate Open Days | University of East London \(uel.ac.uk\)](https://www.uel.ac.uk/undergraduate-open-days)
 - Book a campus tour
 - Accommodation at Docklands campus
 - Twenty Four hours Library at both sites
 - Student Money Advice Rights Team
 - Scholarships/bursaries



University of
East London

**Year of
Science**

THANK YOU FOR
LISTENING
ANY QUESTIONS



*Coming
Soon ...*



What is ... u3a?

u3a is the **University of the Third Age**.

It is a UK-wide collection of 1000+ charities that provides opportunities for those no longer in work to come together and learn for fun.

u3a also offers options for Online Learning by taking part in local and national Online Interest Groups.

With around 400,000 members, u3a helps you make the most of life by exploring new ideas, skills and interests.



Why u3a Newham?



u3a Newham will provide a range of education and learning opportunities – hobbies, skills and activities.

Among the many activities planned are:

- Yoga Groups * a Book Club * Walking Groups *
- Local History Groups * Climate Matters *
- Duplicate Bridge * a Gardening Group *
- Gallery Visits * Theatre Visits *
- Guest Speakers *
- and anything else you can suggest!



Informal meetings

u3a Newham will have a monthly coffee morning, and other informal activities.

There will be opportunities to meet up with other members, request and arrange new activities, discuss the organisation of u3a Newham, or just chat.

“There is no such thing as a worthless conversation, provided you know what to listen for” — James Nathan Miller



How much?

u3a Newham has an annual membership fee of **£15.00**.

This includes £5 payable to the national u3a (for use of the systems, liability insurance etc)

Reduced rates are available. A fund has been set up for people less able to pay the full fee, offering a discount of £5

There can be extra costs for some courses to cover particular expenses. You will be advised of these when you apply for the course.

“Intellectual growth should commence at birth and cease only at death” — Albert Einstein



Inaugural meeting

u3a Newham will launch on

Wednesday 16th October 2024

2pm to 5pm

at

East Ham Library, Barking Road

Where you can register for courses

and

become part of the **u3a** Community



<https://www.newham-u3a.org.uk/index.html>

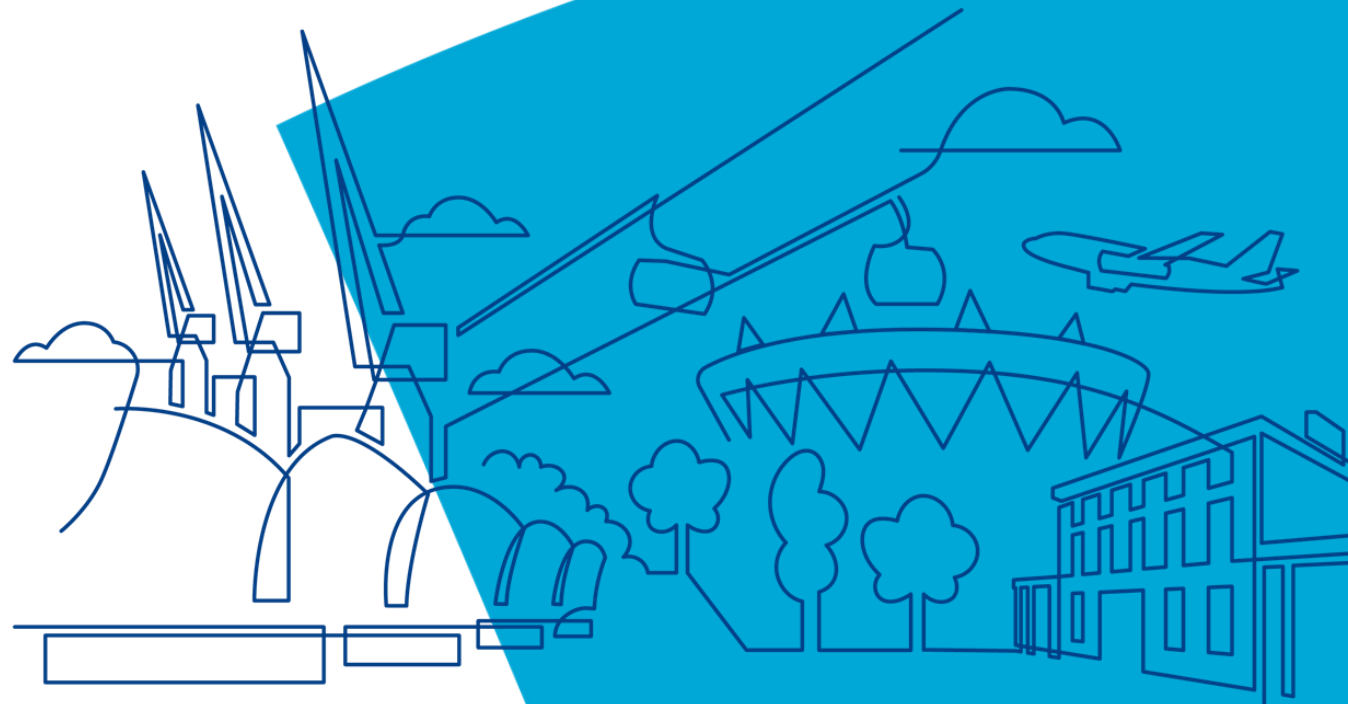


Newham
Recovery College



East London
NHS Foundation Trust

What do we do ?



What do you know?

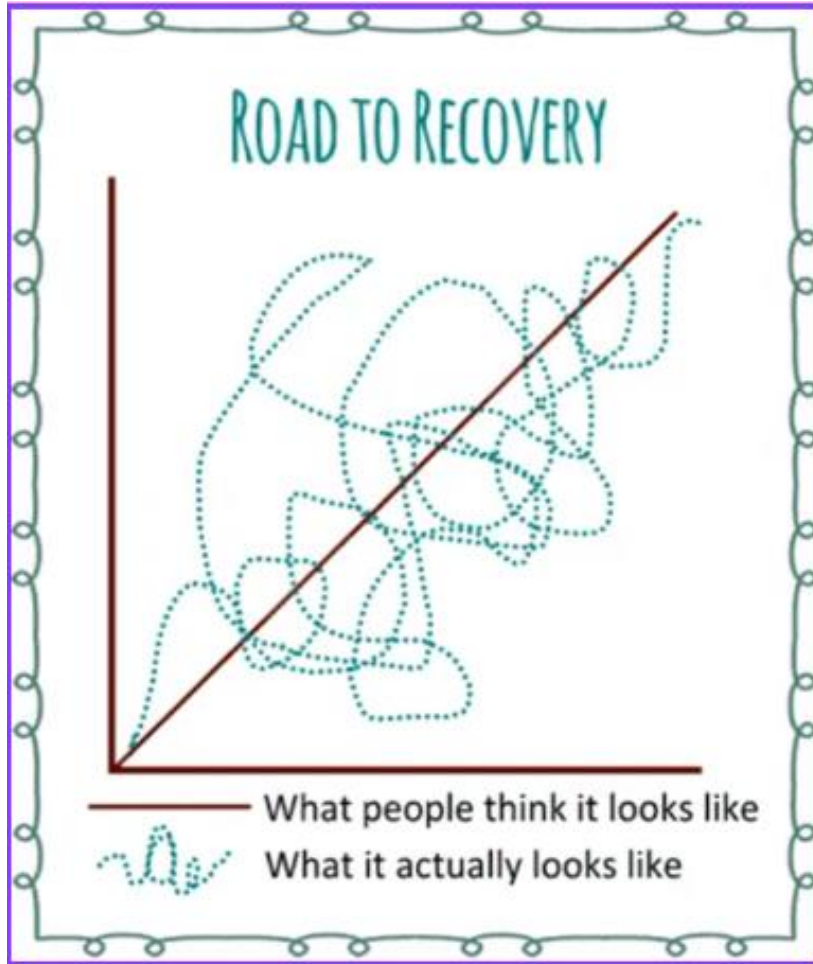
Our prospectus is wide

<https://linktr.ee/newhamrecoverycollege>

Our courses are free to anyone with a connection to Newham and over 18



What is recovery?



**A journey not
a destination !**



Newham Recovery College operates within the principles of CHIME. We provide educational courses and workshops to make positive change in their lives using the principle that we all need

- Hope and Optimism
- Identity
- Meaning
- Empowerment
- Connectness

in our lives



Questions