

We're changing bin collections in Newham.

Get ready for a new routine

✓ **Bins**

✓ **Bath**

✓ **Bed**



From 10 June 2024, several important changes will happen to waste and recycling collection services. These changes will help your hard working collection crews work in a more efficient way, and will also help us to increase our recycling rates. We're committed to becoming carbon neutral by 2030, making changes that will benefit all residents, the borough and the planet.

Be Bin Day Ready



What are the changes?

New collection days

Be sure you know your bin collection day. From 10 June your bins may be collected on a different day than we currently collect - stay up to date and check your collection day at newham.gov.uk/BeBinDayReady

JUNE						
M	T	W	T	F	S	S
					1	2
3	4	5	6	7	8	9
10	11	12	13	14	15	16
17	18	19	20	21	22	23
24	25	26	27	28	29	30

★ Put your bins out the night before your collection day

If you live in a house or a house split into flats, place your bins at the edge of your property for collection.



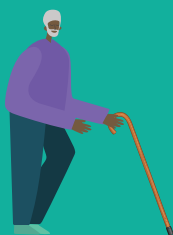
★ Bins should be placed as close to the pavement as possible - for example next to your gate or at the end of your drive.

Bins will need to be out before we start collections from 6am.

Assisted collections

If you think you may struggle to move your bin, find out if you are eligible for an assisted collection, so the crews can move the bin for you.

To apply, visit newham.gov.uk/BeBinDayReady



Recycle every week

You can now use your orange-lidded bin to recycle every week.



✓ Yes please

Items should be empty, clean and dry



✗ No thanks



If a recycling bin contains items we can't recycle, the bin will not be emptied. We will not return to collect recycling bins missed due to incorrect items in the recycling. You will need to remove the items that we cannot recycle before your next scheduled collection day.

No side waste

To help you manage your waste, we will not collect extra rubbish placed beside the bins, nor collect the rubbish bins where the lid is not shut.

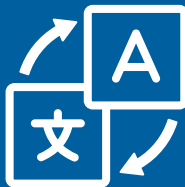




- ✓ Check your collection day
- ✓ Recycling sorted
- ✓ No side waste
- ✓ Bin lid shut
- ✓ Put your bins out the night before

Follow our **#BeBinDayReady** updates online

Stay up to date by following @NewhamLondon on X and Facebook, you can also sign up to the council's weekly newsletter via newham.gov.uk/UpdatesFromMayorAndNewham



Scan me
for different
languages



newham.gov.uk/BeBinDayReady