



## ODESSA LOW TRAFFIC NEIGHBOURHOOD

### Share your views on street improvements

In September 2022, following extensive public consultation and traffic data collection, the Odessa Low Traffic Neighbourhood was made permanent. This scheme prevents motor vehicles from using the residential area as a short cut, in order to make it easier to walk and cycle, and to improve the quality of life for local residents.

The Council is now seeking your views on improving the **design of the modal filter on Ash Road** (see photo above), by converting temporary materials to a permanent design. Modal filters prevent motor vehicles from driving through residential areas using CCTV enforcement, while allowing pedestrians, cyclists, emergency vehicles and waste collection vehicles to pass through.

This leaflet contains:

- **An overview of the low traffic neighbourhood**
- **Draft designs for a permanent modal filter**

# Permanent low traffic neighbourhood

## Street improvements

Now that the Odessa Low Traffic Neighbourhood has been made permanent, the Council is looking to make the neighbourhood even better for walking, cycling and disability access.

Examples of street improvements could be:



Building the modal filters



Increasing green infrastructure across the area, particularly where it can contribute to speed reduction.



Assessing and improving wheeled accessibility across the area (e.g. dropped kerbs).



Improving footways and crossings to reduce motor vehicle turning speeds and reinforce pedestrian priority at side road junctions.



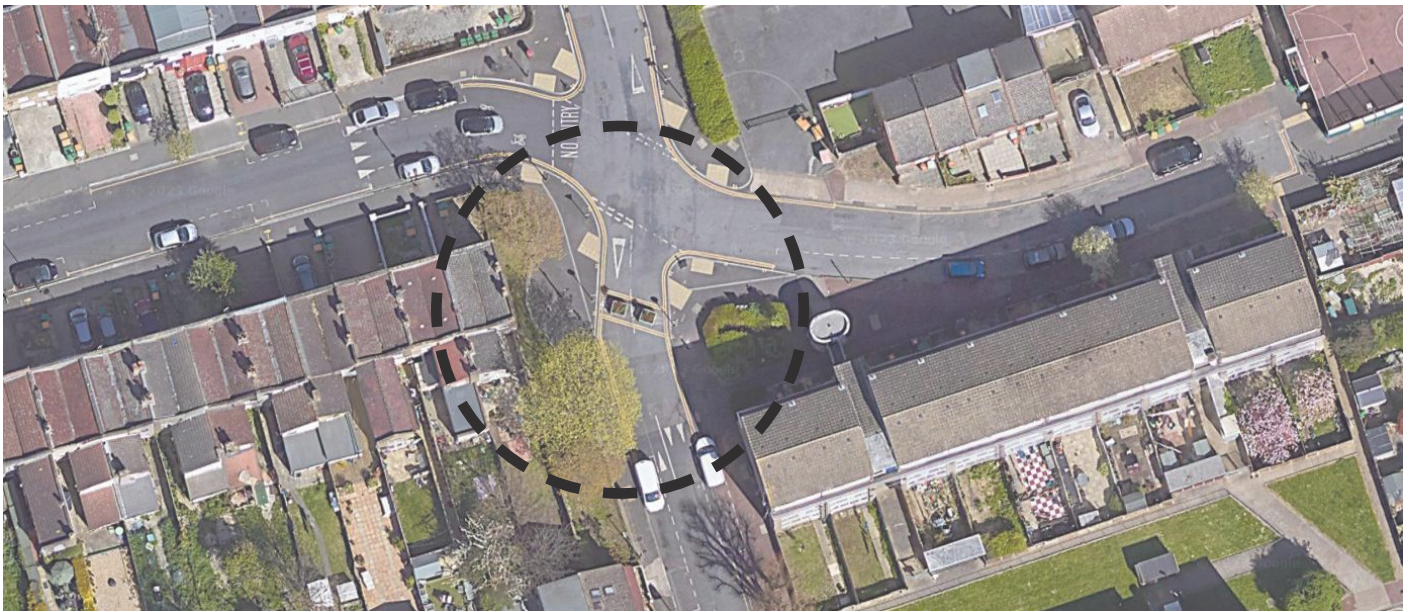
Introducing a 20mph speed limit on boundary roads and adjacent residential streets.



Creating a safer environment on Ash Road

## Ash Road modal filter | Current design

The Council is proposing to upgrade the look and feel of the temporary modal filter on Ash Road. The low traffic neighbourhood map on the next pages shows the location of the filter. The images below show how the temporary modal filter currently appears.



**Satellite view**









**Street view**

**LONDON BOROUGH OF NEWHAM**  
LOW TRAFFIC NEIGHBOURHOODS

**ODESSA**

**KEY**

**Context**

-  Green spaces
-  Main roads
-  Overground
-  Rail
-  Cycle route
-  School

 **Modal filter locations**

- 1 Bow Road
- 2 Ash Road
- 3 Buckingham Road
- 4 Wooden Gardens
- 5 Field Road
- 6 Station Road
- 7 Forest Road
- 8 Bective Road
- 9 Globe Road
- 10 Anna Neagle Close

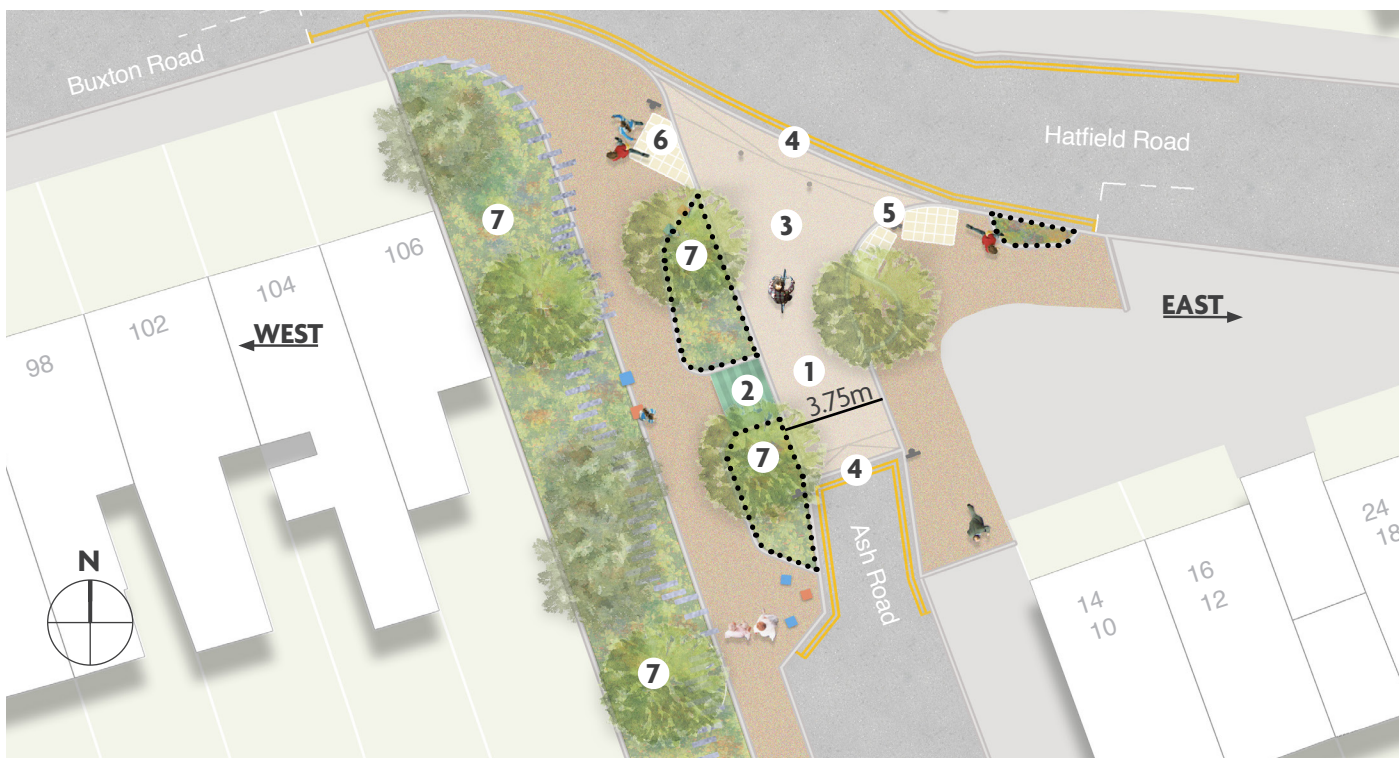


# Ash Road modal filter

## Proposed design

**Our design for the upgrade of the modal filter on Ash Road is at an early stage and is shown on the drawing below.** Schemes such as this will ensure that the low traffic neighbourhood improves the feel and look of the neighbourhood.

**We would like to invite you to give us your feedback so we can produce a final design. On the last page of this leaflet, you will find an email to share your feedback.** If you provide us with your e-mail address, we will update you on the final design. Construction is expected in early 2024.



- ① Retention of 3.75m wide road width for emergency vehicle access
  - ② Secure residential cycle parking
  - ③ Improved quality paving materials
  - ④ Road raised within the length of the modal filter
  - ⑤ Short kerb height (6cm), which is the standard requirement for visually impaired people to detect a kerb and define the difference between pavement and road
  - ⑥ Pedestrian crossings with tactile paving
  - ⑦ New trees
- ..... Up to 60m<sup>2</sup> of new planted areas, which also reduce the risk of localised flooding

## Artist impression

The visualisation below shows how the improved modal filter could look.



## Extension of the road space closed to traffic

**Our early stage design proposes to extend the road space closed to vehicular traffic from existing 1.2m closure to 13m in length. There will be no change to on-street parking availability. 60m<sup>2</sup> of new planted areas are suggested within the redesigned footway areas.**

The road closure (only accessible to pedestrian and cyclists) would extend along Ash Road from the front garden of house No. 10 at the southern extent to the junction with Buxton and Hatfield Road at the northern extent.

# Let's keep in touch!

<b>Bengali</b>	আপনি যদি এই লিফলেটে থাকা সমস্ত তথ্যের অনুবাদ অন্য ভাষায় পেতে চান, তাহলে নিচের কোডটি স্ক্যান করুন এবং রেফারেন্স নম্বরটি উল্লেখ করুন। <b>2237722</b>
<b>Gujarati</b>	જો તમે આ પત્રિકામાં રહેલી માહિતી અન્ય ભાષામાં અનુવાદ કરવામાં આવે તેમ ઇચ્છતા હો, તો નીચેની કોડ સ્કેન કરો અને રેફરન્સ નં બર રજૂ કરો. <b>2237722</b>
<b>Lithuanian</b>	Jei norite, kad šiame lapelyje pateikta informacija būtų išversta į kitą kalbą, nuskaitykite toliau pateiktą kodą ir įveskite nuorodos numerį. <b>2237722</b>
<b>Portuguese</b>	Se desejar que as informações contidas neste folheto sejam traduzidas para outra língua, digitalize o código abaixo e indique o número de referência. <b>2237722</b>

<b>Romanian</b>	Dacă doriți ca informațiile conținute în această broșură să fie traduse într-o altă limbă, scanați codul de mai jos și menționați numărul de referință. <b>2237722</b>
<b>Spanish</b>	Si desea que la información contenida en este folleto sea traducida a otro idioma, escanee el siguiente código y cite el número de referencia. <b>2237722</b>
<b>Tamil</b>	இந்த சிறுபிரசுரத்தில் இடம்பெற்றுள்ள தகவல்களை நீங்கள் வேறொரு மொழியில் மொழிபெயர்க்க விரும்பினால், குறியீட்டை எகேசெய்து குறிப்பு எண்ணைக் கற்படவம். <b>2237722</b>
<b>Urdu</b>	اگر آپ اس دستي پرچے ميں شامل معلومات کا ترجمہ کسی اور زبان ميں چاہتے ہيں، تو نيچے ديا گیا کوڈ سکين کریں اور حوالہ نمبر نقل کریں۔ <b>2237722</b>

## Contact us

If you have any further questions, phone or email by **26 November 2023**



**020 8430 2000**

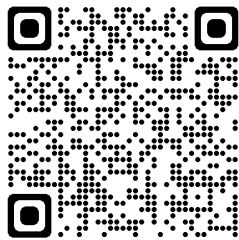


**liveableneighbourhoods@newham.gov.uk**

## Further information

For more information, please visit our website using the URL or scan our QR code below.

[www.newham.gov.uk/transport-streets/low-traffic-neighbourhood](http://www.newham.gov.uk/transport-streets/low-traffic-neighbourhood)



## Accessible formats

Accessible formats are available on Newham Low Traffic Neighbourhood website, and include:

- PDF
- Plain text (Word)
- Easy Read (simplified text)
- Audio recording
- British sign language summary

## Other languages

For a translation of this document:

- Visit [shorturl.at/bHKT1](http://shorturl.at/bHKT1) or scan the QR code below and enter code **2237722**, or
- Call 0203 373 4000

