

WE ARE NEWHAM.



Tell us what you think about changes we want to make to Ash Road



Easy read booklet
November 2023

Who we are and what this booklet is about



We are **Newham Council, London**. We want to make Ash Road an easier and safer place for people to walk, cycle and **wheel**.



Wheel means to use a wheelchair or mobility aids like a walker.



We have some ideas about how to make Ash Road better. We want to know if you like them.



This booklet tells you about the changes we might make and how you can tell us what you think.

Low Traffic Neighbourhood



To stop cars driving along Ash Road we made the Odessa **Low Traffic Neighbourhood**.



A **Low Traffic Neighbourhood** is an area where lots of people live but not many cars and other vehicles are allowed to drive.



A Low Traffic Neighbourhood means

- roads are safer.
- it's better to walk and cycle.
- it's easier for disabled people to use roads and paths.
- there are more trees and plants.
- people are happier.
- there is less noise and **pollution**.



Pollution is when cars and other vehicles use fuels like petrol and diesel which make the air dirty.

Changes we want to make to Ash Road



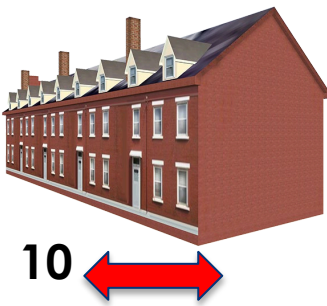
The Odessa Low Traffic Neighbourhood is now **permanent**. **Permanent** means it will last a long time.

We want to make some changes to Ash Road to make it better.



We might

- ✓ make the part of the road that is closed look better. For example have nicer wooden plant pots.
- ✓ make the part of the road that is closed bigger. The road would be closed from the front garden of house number 10, to where Buxton and Hatfield roads meet.
- ✓ make the part of the road that is closed higher.





- ✓ add more trees and plants. This might make people drive more slowly.



- ✓ make the area safer and more **accessible**. For example, make sure kerbs are flat where people who use wheels cross the road.



Accessible means it can be used by everyone.



- ✓ make kerbs bigger so people who are blind or cannot see well know where the road ends and the path starts.



- ✓ make pavements better.



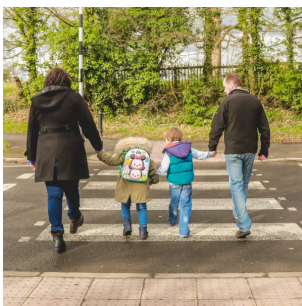
- ✓ make **junctions** safer for people to cross the road. A **junction** is where two roads meet.



- ✓ make a rule that no one can drive faster than 20 miles per hour on roads next to the Low Traffic Neighbourhood.



- ✓ make sure people have a safe space to park their bikes.



- ✓ put in crossings with **tactile bumps** so everyone knows where to safely cross the road. **Tactile bumps** are raised dots you can feel through your shoes.



We want to start making these changes at the beginning of 2024.

What we will keep the same

We will



- ✓ make sure the road stays as wide as it is now, so it's easy to drive on.



- ✓ use the CCTV cameras we already have to make sure people do not drive on the road where it is closed.



- ✓ keep the same number of parking spaces for cars.
- ✓ make sure you can still walk and cycle in the same places as before.



- ✓ make sure rubbish lorries, ambulances, police cars and fire engines can still drive wherever they need to.

What Ash Road looks like now



What Ash Road looks like now from above



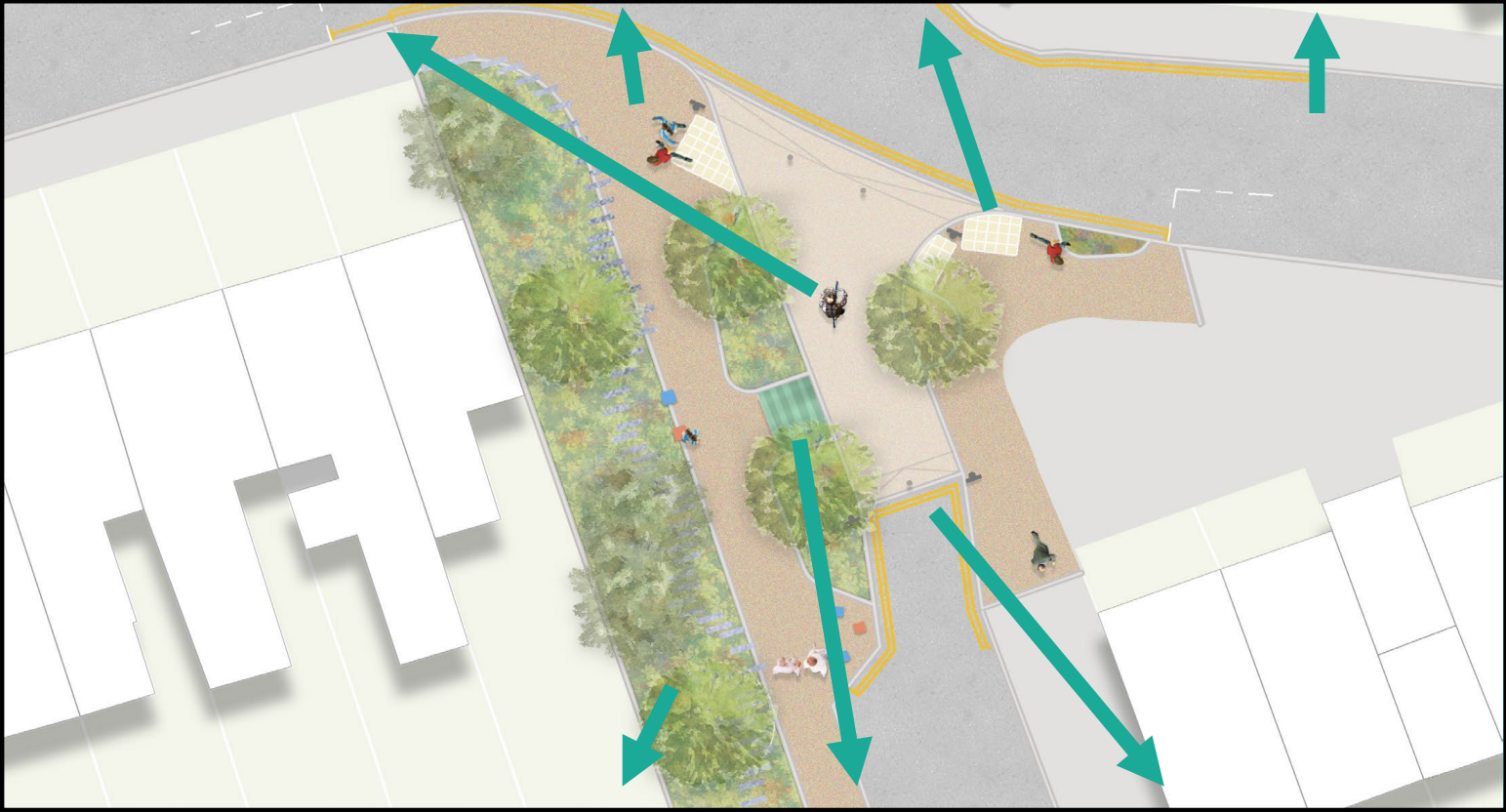
What we want Ash Road to look like from above

Better pavements

Tactile crossing

Better kerbs

Wide roads



More trees and plants

Bike parking

Higher road where closed

What we want Ash Road to look like



More trees

More plants

Bike parking

How to tell us what you think



**Tell us what you think by
26 November 2023**

Send an email to this address

LiveableNeighbourhoods@newham.gov.uk

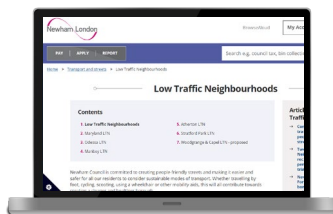


Or call this telephone number

020 8430 2000

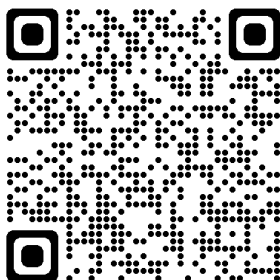


Give us your email address if you want us to tell you about our final plans.



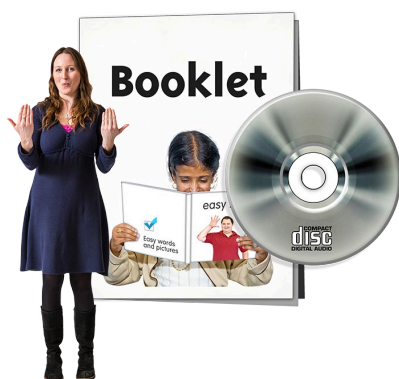
Go to our website to find out more

www.newham.gov.uk/transport-streets/low-traffic-neighbourhood



You can point your mobile phone camera at this QR code and it will take you to our website.

Other formats and languages



Go to our website to find the PDF, plain text, audio and sign language (BSL) versions of this booklet.

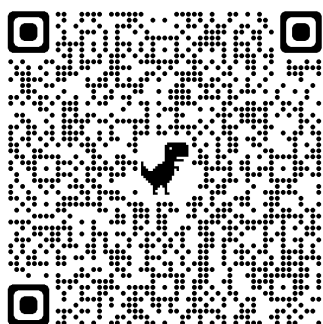


If you need this booklet in a different language

- go to this website shorturl.at/bHKT1





- call this telephone number **0203 373 4000**



- point your mobile phone camera at this QR code to go to our website and use code **2237722**.

Thank you for reading this booklet



ODESSA LOW TRAFFIC NEIGHBOURHOOD
Share your views on street improvements

In September 2022, following extensive public consultation and traffic data collection, the Odessa Low Traffic Neighbourhood was made permanent. This scheme prevents motor vehicles from using the residential area as a short cut, in order to make it easier to walk and cycle, and to improve the quality of life for local residents.

The Council is now seeking your views on improving the **design of the modal filter on Ash Road** (see photo above), by converting temporary materials to a permanent design. Modal filters prevent motor vehicles from driving through residential areas using CCTV enforcement, while allowing pedestrians, cyclists, emergency vehicles and waste collection vehicles to pass through.

This leaflet contains:

- An overview of the low traffic neighbourhood
- Draft designs for a permanent modal filter

September 2023

OUR NEW STREETS
WE ARE NEWHAM.

Thank you to A2i for the words
www.a2i.co.uk (reference 37957)

The full version of this booklet is called
Odessa Low Traffic Neighbourhood
Share your views on street improvements