

**WE ARE NEWHAM.**



# Tell us what you think about changes we want to make to Water Lane Crossing



**Easy read booklet**  
**November 2023**

# Who we are and what this booklet is about



We are **Newham Council, London**. We want to add a crossing on Water Lane in E15 to make it safer for people to walk, cycle and **wheel** across the street.



**Wheel** means to use a wheelchair or mobility aids like a walker.



We have some ideas about how to make Water Lane better. We want to know if you like them.



This booklet tells you about the changes we might make and how you can tell us what you think.

# Low Traffic Neighbourhoods



To make streets in Newham safer and easier to use we made **Low Traffic Neighbourhoods** in Manbey and Atherton.



A **Low Traffic Neighbourhood** is an area where lots of people live but not many cars and other vehicles are allowed to drive.



A Low Traffic Neighbourhood means

- roads are safer.
- it's better to walk and cycle.
- it's easier for disabled people to use roads and paths.
- there are more trees and plants.
- people are happier.
- there is less noise and **pollution**.



**Pollution** is when cars and other vehicles use fuels like petrol and diesel which make the air dirty.

# Changes we want to make next



Before we made the Low Traffic Neighbourhoods in Manbey and Atherton we asked people who live and work there to tell us what they thought about our plans.



We thought carefully about what they told us and now we want to make some changes.



We want to add a crossing on Water Lane so everyone can cross the road safely and easily.

← Manbey Grove



Louise Road →

The crossing would be between Louise Road and Manbey Grove.



The crossing will include a bike path. A bike path is sometimes called a cycle path and is only for people riding bikes.



The bike path on the crossing will join up the **cycle routes** in the area which lots of people use.



The **cycle route** is a special path only for people using bikes. Sometimes it's a special lane on a road.



We will add more trees and plants near the new crossing to help to stop **flooding**.



**Flooding** is when water from rain or rivers damages homes and businesses.

# Other changes we will make



To make space for the new crossing we will

Louise Road to  
Water Lane



- close Louise Road to cars and other vehicles, where it joins Water Lane.

Manbey Grove  
to Water Lane

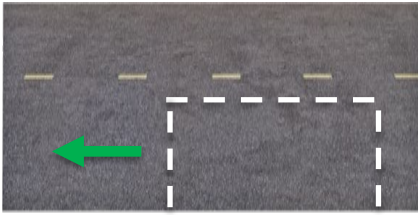


- close Manbey Grove to cars and other vehicles, where it joins Water Lane.

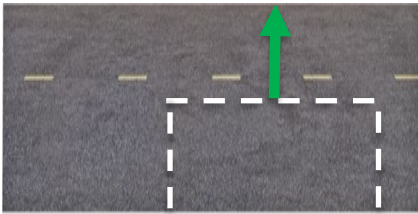
Manbey Grove



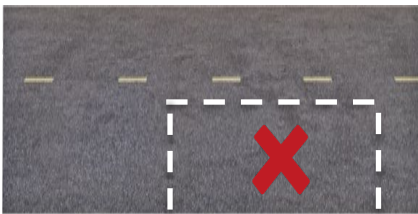
- make Manbey Grove a **two-way street**. This means cars and other vehicles will be able to drive both ways on it.



- move 1 parking space on Manbey Grove to a different place on the road so cars can turn around safely.



- move 1 parking space on Louise Road to the other side of the road.



- take away 1 parking space from Louise Road.



- move the bus stop outside Shelter on Water Lane to a different place on the road.



- add 2 new signs to show where the cycle path is.

# What we will keep the same

## Louise Road from Water Lane



You will still be able to walk or cycle down Louise Road from Water Lane.

## Manbey Grove from Water Lane



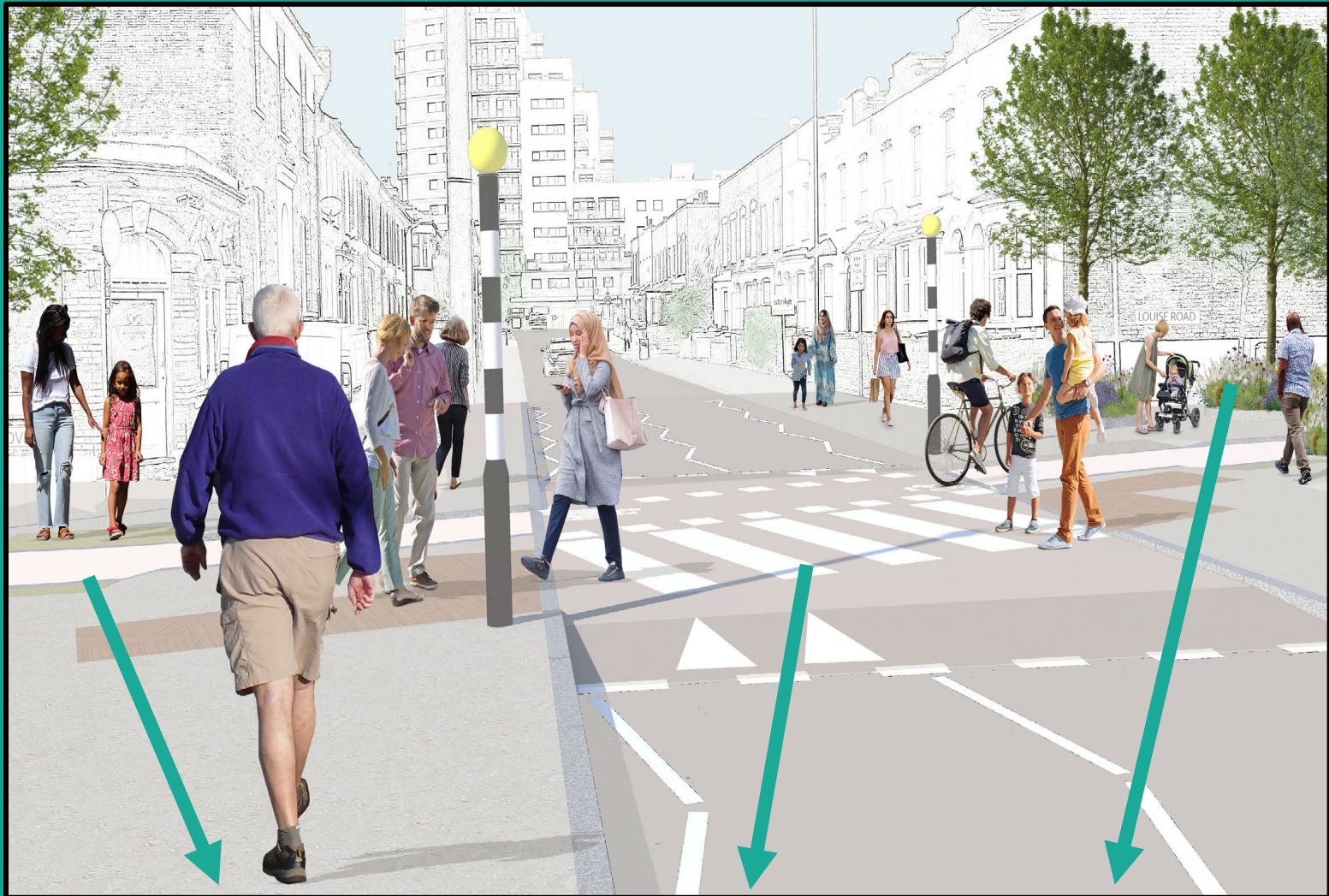
You will still be able to walk or cycle down Manbey Grove from Water Lane.



Cars and other vehicles will still be able to get to Water Lane by using Keogh Road or Manbey Street.



# What we want Water Lane to look like



**End of Manbey  
Grove closed to cars**

**New crossing**

**More trees  
and plants**

# How to tell us what you think



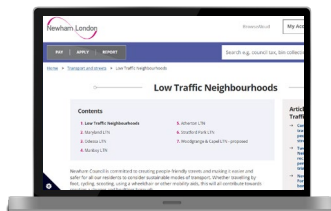
Tell us what you think by  
**26 November 2023**



Send an email to this address  
[LiveableNeighbourhoods@newham.gov.uk](mailto:LiveableNeighbourhoods@newham.gov.uk)



Or call this telephone number  
**020 8430 2000**



Go to our website to find out more  
[www.newham.gov.uk/transport-streets/low-traffic-neighbourhood](http://www.newham.gov.uk/transport-streets/low-traffic-neighbourhood)



After 26 November we will think carefully about what people have told us.



# Thank you for reading this booklet



Newham London

An artist's impression of the proposed crossing. 

**WATER LANE CROSSING**  
Share your views on street improvements

The Council is seeking your views on the introduction of a crossing point on Water Lane E15 so people walking, cycling and wheeling can safely travel across this street.

September 2023

**OUR NEW STREETS**  


**WE ARE NEWHAM.**

Thank you to A2i for the words  
[www.a2i.co.uk](http://www.a2i.co.uk) (reference 37957)

The full version of this booklet is called  
**Water Lane Crossing**  
**Share your views on street improvements**