

# WE ARE FOREST GATE & MARYLAND.

# WE ARE NEWHAM.



The UP Garden and Andy MacManus

## Forest Gate & Maryland Community Neighbourhood Resident Engagement & Participation

May 2023

# INTRODUCTION

## WARDS

Forest Gate & Maryland Community Neighbourhood is made up of the following wards:

**Forest Gate North**  
**Forest Gate South**  
**Maryland**

## ABOUT THE AREA

This mainly residential area is bordered by Manor Park to the east, Stratford to the west, and is in close proximity to the Queen Elizabeth Olympic Park. It is known for its Victorian and Georgian style homes and benefits from green spaces like Wanstead flats. It is a vibrant, active and multicultural neighbourhood and is one of the most ethnically diverse areas in England, with a constantly changing population.



## TRANSPORT

Forest Gate and Maryland stations are located in Zone 3 on the Elizabeth line. Woodgrange Park and Wanstead Park stations are also nearby. With the recent development of Crossrail, Forest Gate and Maryland has seen an influx of new residents, including many young professionals and families.

## COMMUNITY FACILITIES

Community facilities and spaces in the neighbourhood include Forest Gate Library, Forest Lane Park, Forest Lane Lodge Community Centre, Forest Gate Community Garden, Forest Gate Learning Zone, Durning Hall and various places of worship.

Forest Gate is also known for its weekly resident-led Woodgrange community market, exhibitions by local artists at the library, Christmas Switch On event, annual Forest Gate Festival and Forest Gayte Pride.

## RESIDENT VIEWS



### Laura Glendinning

“ Our neighbourhood has a great little Saturday market, places to have something to eat and go out with friends, live music in pubs and independent cafés, a friendly library that has art exhibitions and space for community activities as well being a warm hub.

Wanstead Flats provide green open space for exercise and relaxation. There is lots of community goodwill where people have come together creatively – the Forest Gate Community Garden, Magpie Project, Forest Gate Festival and crochet sculptures in the marketplace. Although there is always more that can be done, I think our neighbourhood is welcoming.

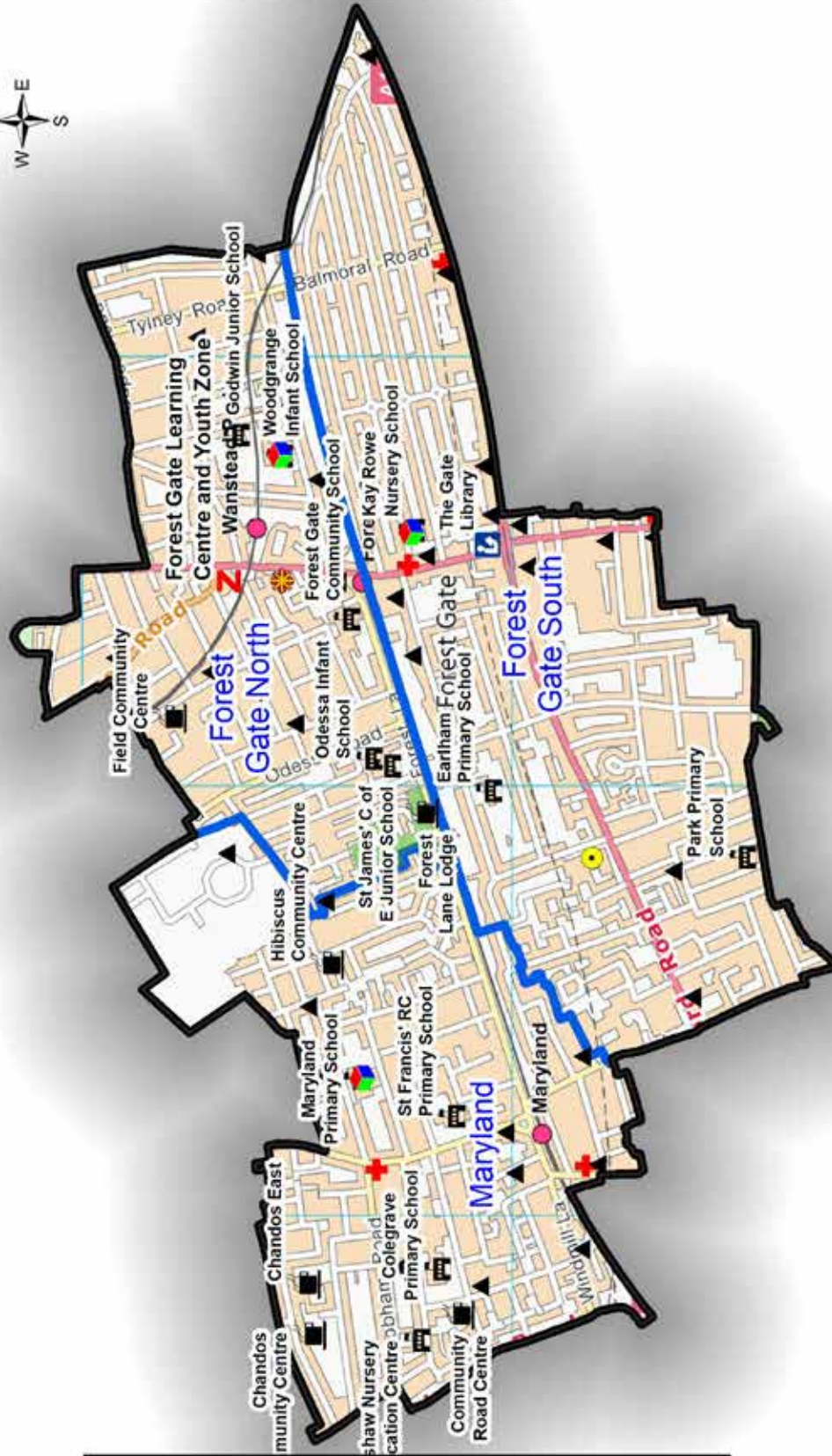


### Zahra Jones

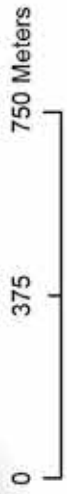
“ I am proud to live in Forest Gate. I feel lucky being so close to nature and local amenities.

I love how diverse and creative our neighbourhood and residents are. I'm amazed by the local people who play such an active part in the community and have had the opportunity to hear more about this at the local community assembly, which is helping to mobilise a range of community projects to make positive developments in the area. I am also enjoying being part of the assembly working group, an opportunity for residents to support the community assembly and residents' participatory processes.

# Forest Gate Community Neighbourhood



Legend	
	Adult Learning/Youth Zone
	Adult Learning Centre
	Youth Zone
	Library
	Place of Worship
	Town Hall
	Community Centre
	Health Centre
	Hospital
	GP Surgery
	Youth Centre
	Leisure Centre
	Childrens Centre
	School
	Park/Playing Field
	Ward Boundaries



# FOREST GATE NORTH

## CENSUS DATA 2021

Every ten years since 1801, the UK has set aside one day for the census - a count of all the people and households. It is the most complete source of information about the population that we have. The latest census was held on Sunday 21 March 2021. A host of questions are asked in the census which includes age, ethnicity, religion, general health, level of qualification, and economic activity. Some results from the 2021 census are set out for wards in Forest Gate & Maryland.



**POPULATION: 10,987** (3.1% of Newham's population)

### AGE

4 and under	<b>773</b>	7%	20-24	<b>726</b>	6.6%	65-74	<b>578</b>	5.3%
5-9	<b>676</b>	6.2%	25-34	<b>1,963</b>	17.9%	75-84	<b>239</b>	2.2%
10-15	<b>808</b>	7.4%	35-49	<b>2,753</b>	25.1%	85 and over	<b>95</b>	0.9%
16-19	<b>500</b>	4.6%	50-64	<b>1,873</b>	17.1%	100 and over	<b>1</b>	0%

### ETHNICITY

The Census 2021 gave residents the choice to identify themselves through one of 19 available response options, which included categories with write-in response options. For Newham, there were over 200 additional ethnic identifications as a result.

<b>Asian, Asian British or Asian Welsh</b>	<b>3,201</b>	<b>29.1%</b>	<b>Black, Black British, Black Welsh, Caribbean or African</b>	<b>2,221</b>	<b>20.2%</b>	<b>White</b>	<b>4,486</b>	<b>40.8%</b>
Bangladeshi	<b>1,537</b>	14%	African	<b>1,247</b>	11.3%	English, Welsh, Scottish, Northern Irish or British	<b>2,587</b>	23.5%
Chinese	<b>45</b>	0.4%	Caribbean	<b>721</b>	6.6%	Irish	<b>130</b>	1.2%
Indian	<b>578</b>	5.3%	Other	<b>253</b>	2.3%	Gypsy or Irish Traveller	<b>9</b>	0.1%
Pakistani	<b>721</b>	6.6%	<b>Mixed or Multiple ethnic groups</b>	<b>662</b>	<b>6%</b>	Roma	<b>63</b>	0.6%
Other	<b>320</b>	2.9%	White and Asian	<b>127</b>	1.2%	Other	<b>1,697</b>	15.4%
			White and Black African	<b>124</b>	1.1%	<b>Other</b>	<b>417</b>	<b>3.8%</b>
			White and Black Caribbean	<b>176</b>	1.6%	Arab	<b>68</b>	0.6%
			Other	<b>235</b>	2.1%	Other	<b>349</b>	3.2%

### RELIGION

No religion	<b>2,208</b>	20.1%	Christian	<b>4,467</b>	40.6%	Buddhist	<b>35</b>	0.3%	Hindu	<b>289</b>	2.6%	Jewish	<b>28</b>	0.3%	Muslim	<b>3,045</b>	27.7%	Sikh	<b>135</b>	1.2%	Other	<b>69</b>	0.6%	Not answered	<b>713</b>	6.5%
-------------	--------------	-------	-----------	--------------	-------	----------	-----------	------	-------	------------	------	--------	-----------	------	--------	--------------	-------	------	------------	------	-------	-----------	------	--------------	------------	------

### GENERAL HEALTH

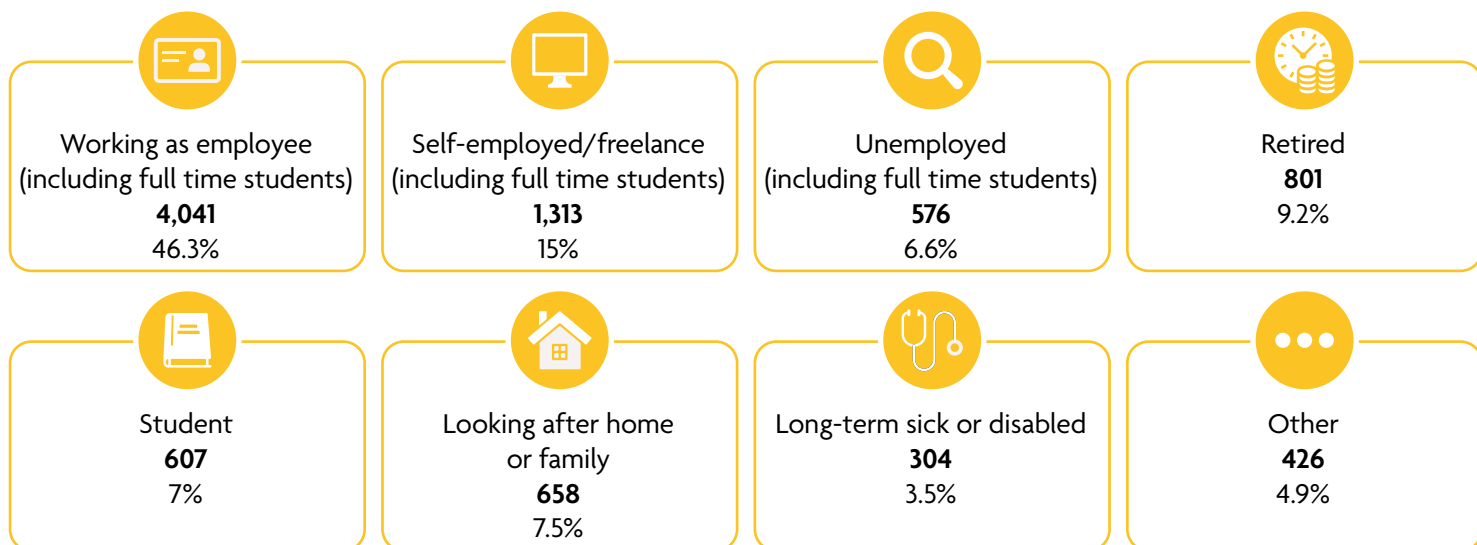
	<b>Very good</b>	<b>5,544</b>	50.5%		<b>Good</b>	<b>3,708</b>	33.7%		<b>Fair</b>	<b>1,245</b>	11.3%		<b>Bad</b>	<b>381</b>	3.5%		<b>Very bad</b>	<b>110</b>	1%
--	------------------	--------------	-------	--	-------------	--------------	-------	--	-------------	--------------	-------	--	------------	------------	------	--	-----------------	------------	----

# FOREST GATE NORTH

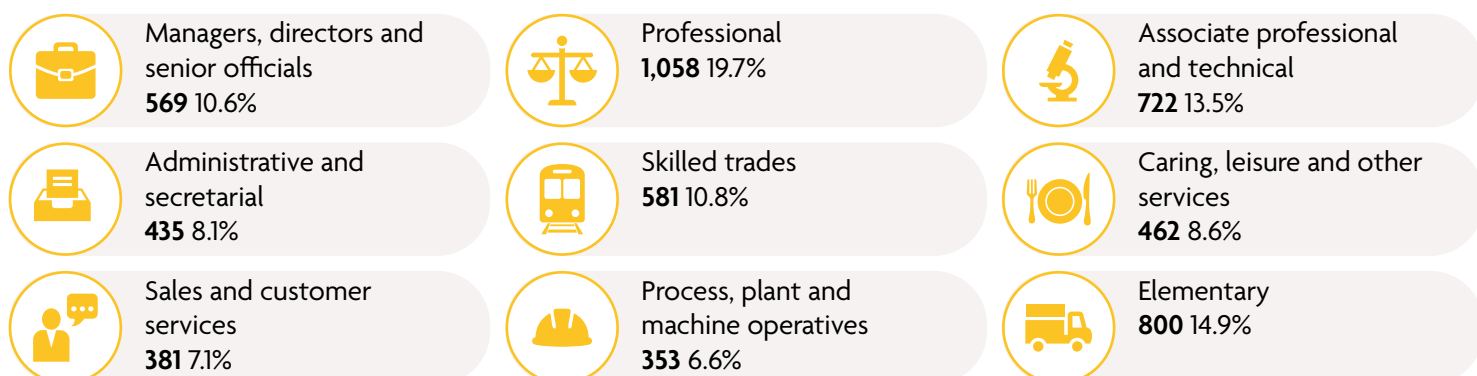
## QUALIFICATION

QUALIFICATION	NUMBER	%
No qualifications	1,602	18.4%
Level 1 - 1 to 4 GCSEs grade A* to C , Any GCSEs at other grades, O levels or CSEs (any grades), 1 AS level, NVQ level 1, Foundation GNVQ, Basic or Essential Skills	849	9.7%
Level 2 - 5 or more GCSEs (A* to C or 9 to 4), O levels (passes), CSEs (grade 1), School Certification, 1 A level, 2 to 3 AS levels, VCEs, Intermediate or Higher Diploma, Welsh Baccalaureate, Intermediate Diploma, NVQ level 2, Intermediate GNVQ, City and Guilds Craft, BTEC First or General Diploma, RSA Diploma	900	10.3%
Apprenticeship	341	3.9%
Level 3 - 2 or more A levels or VCEs, 4 or more AS levels, Higher School Certificate, Progression or Advanced Diploma, Welsh Baccalaureate Advance Diploma, NVQ level 3; Advanced GNVQ, City and Guilds Advanced Craft, ONC, OND, BTEC National, RSA Advanced Diploma	1,125	12.9%
Level 4 - degree (BA, BSc), higher degree (MA, PhD, PGCE), NVQ level 4 to 5, HNC, HND, RSA Higher Diploma, BTEC Higher level, professional qualifications (for example, teaching)	3,643	41.7%
Other: vocational or work-related qualifications, other qualifications achieved in England or Wales, qualifications achieved outside England or Wales (equivalent not stated or unknown)	270	3.1%

## ECONOMIC ACTIVITY



## OCCUPATION



# FOREST GATE SOUTH

## CENSUS DATA 2021

Every ten years since 1801, the UK has set aside one day for the census - a count of all the people and households. It is the most complete source of information about the population that we have. The latest census was held on Sunday 21 March 2021. A host of questions are asked in the census which includes age, ethnicity, religion, general health, level of qualification, and economic activity. Some results from the 2021 census are set out for wards in Forest Gate & Maryland.



**POPULATION: 17,774** (5.1% of Newham's population)

### AGE

4 and under	1,190	6.7%	20-24	1,353	7.6%	65-74	894	5%
5-9	1,168	6.6%	25-34	3,404	19.2%	75-84	413	2.3%
10-15	1,326	7.5%	35-49	4,403	24.8%	85 and over	171	1%
16-19	876	4.9%	50-64	2,577	14.5%	100 and over	2	0%

### ETHNICITY

The Census 2021 gave residents the choice to identify themselves through one of 19 available response options, which included categories with write-in response options. For Newham, there were over 200 additional ethnic identifications as a result.

<b>Asian, Asian British or Asian Welsh</b>	<b>7,955</b>	<b>44.8%</b>	<b>Black, Black British, Black Welsh, Caribbean or African</b>	<b>3,079</b>	<b>17.3%</b>	<b>White</b>	<b>5,052</b>	<b>28.4%</b>
Bangladeshi	3,989	22.4%	African	1,772	10%	English, Welsh, Scottish, Northern Irish or British	2,344	13.2%
Chinese	98	0.6%	Caribbean	876	4.9%	Irish	97	0.5%
Indian	1,881	10.6%	Other	431	2.4%	Gypsy or Irish Traveller	6	0%
Pakistani	1,402	7.9%	<b>Mixed or Multiple ethnic groups</b>	<b>892</b>	<b>5%</b>	Roma	116	0.7%
Other	585	3.3%	White and Asian	175	1%	Other	2,489	14%
			White and Black African	198	1.1%	<b>Other</b>	<b>796</b>	<b>4.5%</b>
			White and Black Caribbean	238	1.3%	Arab	176	1%
			Other	281	1.6%	Other	620	3.5%

### RELIGION

No religion	Christian	Buddhist	Hindu	Jewish	Muslim	Sikh	Other	Not answered
2,557	5,724	100	600	26	7,214	340	97	1,117
14.4%	32.2%	0.6%	3.4%	0.1%	40.6%	1.9%	0.5%	6.3%

### GENERAL HEALTH

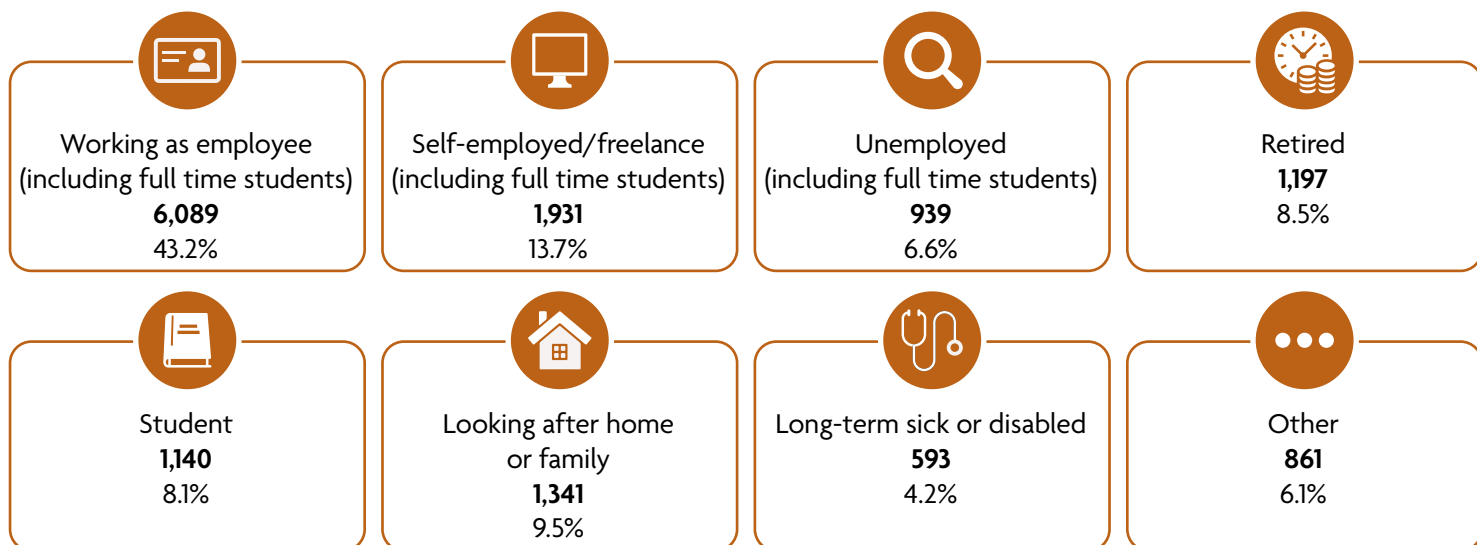
Very good	Good	Fair	Bad	Very bad
8,884	6,103	1,943	643	202
50%	34.3%	10.9%	3.6%	1.1%

# FOREST GATE SOUTH

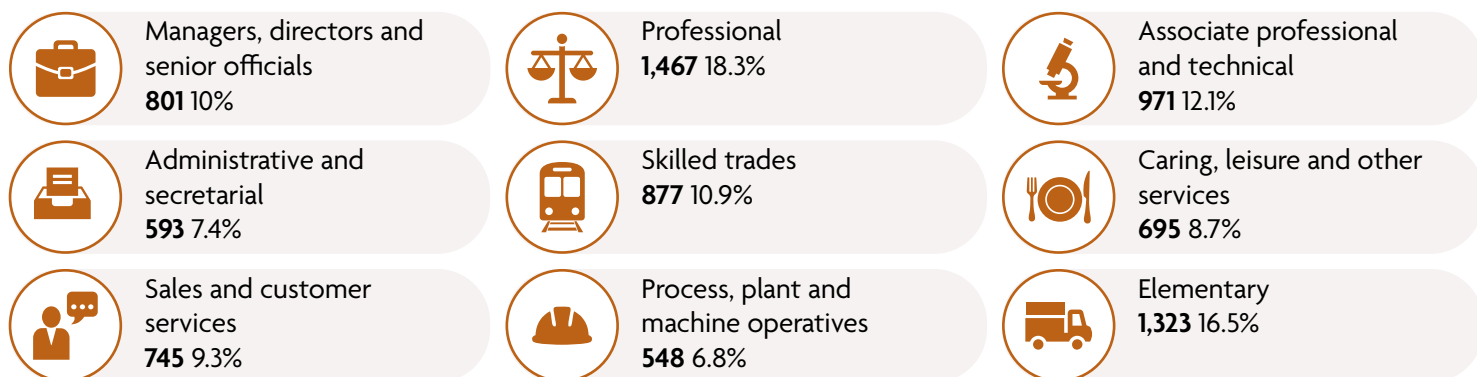
## QUALIFICATION

QUALIFICATION	NUMBER	%
No qualifications	3,085	21.9%
Level 1 - 1 to 4 GCSEs grade A* to C , Any GCSEs at other grades, O levels or CSEs (any grades), 1 AS level, NVQ level 1, Foundation GNVQ, Basic or Essential Skills	1,282	9.1%
Level 2 - 5 or more GCSEs (A* to C or 9 to 4), O levels (passes), CSEs (grade 1), School Certification, 1 A level, 2 to 3 AS levels, VCEs, Intermediate or Higher Diploma, Welsh Baccaureate, Intermediate Diploma, NVQ level 2, Intermediate GNVQ, City and Guilds Craft, BTEC First or General Diploma, RSA Diploma	1,452	10.3%
Apprenticeship	436	3.1%
Level 3 - 2 or more A levels or VCEs, 4 or more AS levels, Higher School Certificate, Progression or Advanced Diploma, Welsh Baccaureate Advance Diploma, NVQ level 3; Advanced GNVQ, City and Guilds Advanced Craft, ONC, OND, BTEC National, RSA Advanced Diploma	1,789	12.7%
Level 4 - degree (BA, BSc), higher degree (MA, PhD, PGCE), NVQ level 4 to 5, HNC, HND, RSA Higher Diploma, BTEC Higher level, professional qualifications (for example, teaching)	5,507	39.1%
Other: vocational or work-related qualifications, other qualifications achieved in England or Wales, qualifications achieved outside England or Wales (equivalent not stated or unknown)	543	3.9%

## ECONOMIC ACTIVITY



## OCCUPATION



# MARYLAND

## CENSUS DATA 2021

Every ten years since 1801, the UK has set aside one day for the census - a count of all the people and households. It is the most complete source of information about the population that we have. The latest census was held on Sunday 21 March 2021. A host of questions are asked in the census which includes age, ethnicity, religion, general health, level of qualification, and economic activity. Some results from the 2021 census are set out for wards in Forest Gate & Maryland.



**POPULATION: 12,455** (3.5% of Newham's population)

### AGE

4 and under	<b>786</b>	6.3%	20-24	<b>1,094</b>	8.8%	65-74	<b>603</b>	4.8%
5-9	<b>652</b>	5.2%	25-34	<b>2,693</b>	21.6%	75-84	<b>320</b>	2.6%
10-15	<b>750</b>	6%	35-49	<b>3,000</b>	24.1%	85 and over	<b>120</b>	1%
16-19	<b>542</b>	4.4%	50-64	<b>1,890</b>	15.2%	100 and over	<b>1</b>	0%

### ETHNICITY

The Census 2021 gave residents the choice to identify themselves through one of 19 available response options, which included categories with write-in response options. For Newham, there were over 200 additional ethnic identifications as a result.

Asian, Asian British or Asian Welsh	<b>3,269</b>	<b>26.3%</b>
Bangladeshi	<b>1,488</b>	12%
Chinese	<b>188</b>	1.5%
Indian	<b>602</b>	4.8%
Pakistani	<b>650</b>	5.2%
Other	<b>341</b>	2.7%

Black, Black British, Black Welsh, Caribbean or African	<b>2,650</b>	<b>21.3%</b>
African	<b>1,580</b>	12.7%
Caribbean	<b>797</b>	6.4%
Other	<b>273</b>	2.2%

Mixed or Multiple ethnic groups	<b>696</b>	<b>5.6%</b>
White and Asian	<b>120</b>	1%
White and Black African	<b>161</b>	1.3%
White and Black Caribbean	<b>182</b>	1.5%
Other	<b>233</b>	1.9%

White	<b>5,197</b>	<b>41.7%</b>
English, Welsh, Scottish, Northern Irish or British	<b>2,340</b>	18.8%
Irish	<b>110</b>	0.9%
Gypsy or Irish Traveller	<b>12</b>	0.1%
Roma	<b>149</b>	1.2%
Other	<b>2,586</b>	20.8%

Other	<b>639</b>	<b>5.1%</b>
Arab	<b>146</b>	1.2%
Other	<b>493</b>	4%

### RELIGION

No religion	<b>2,443</b>	19.6%
Christian	<b>5,332</b>	42.8%
Buddhist	<b>123</b>	1%
Hindu	<b>326</b>	2.6%
Jewish	<b>20</b>	0.2%
Muslim	<b>3,133</b>	25.2%
Sikh	<b>69</b>	0.6%
Other	<b>94</b>	0.8%
Not answered	<b>914</b>	7.3%

### GENERAL HEALTH

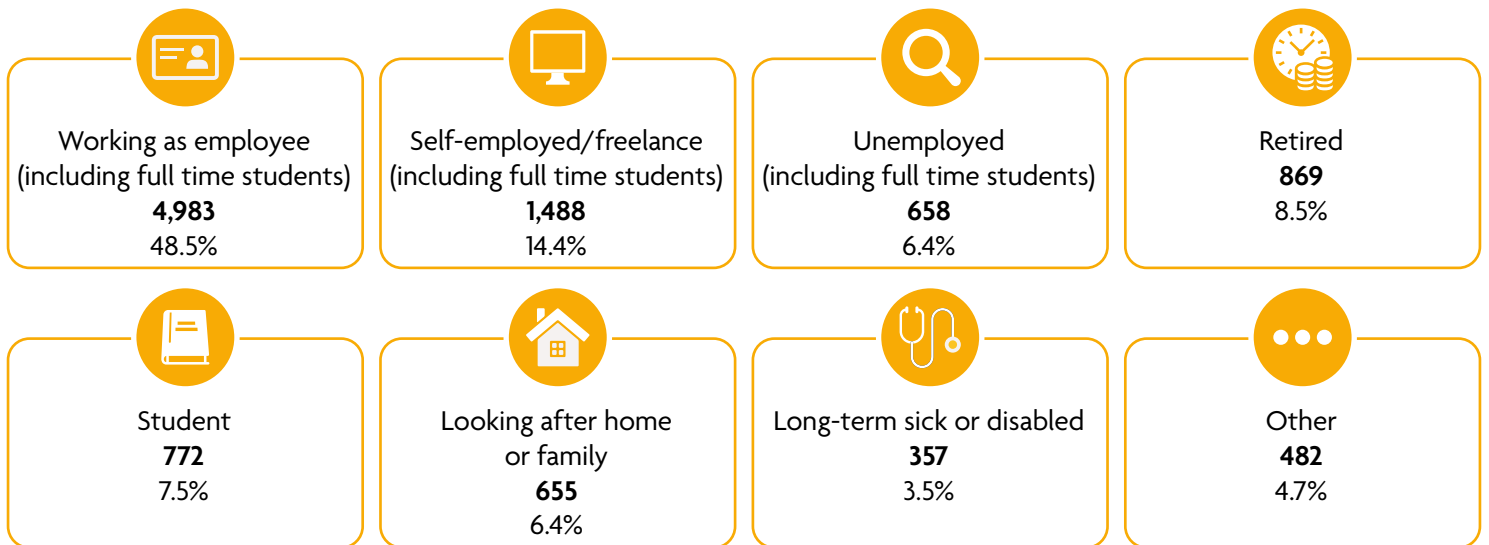
	Very good	<b>6,139</b>	49.3%
	Good	<b>4,300</b>	34.5%
	Fair	<b>1,437</b>	11.5%
	Bad	<b>429</b>	3.4%
	Very bad	<b>151</b>	1.2%



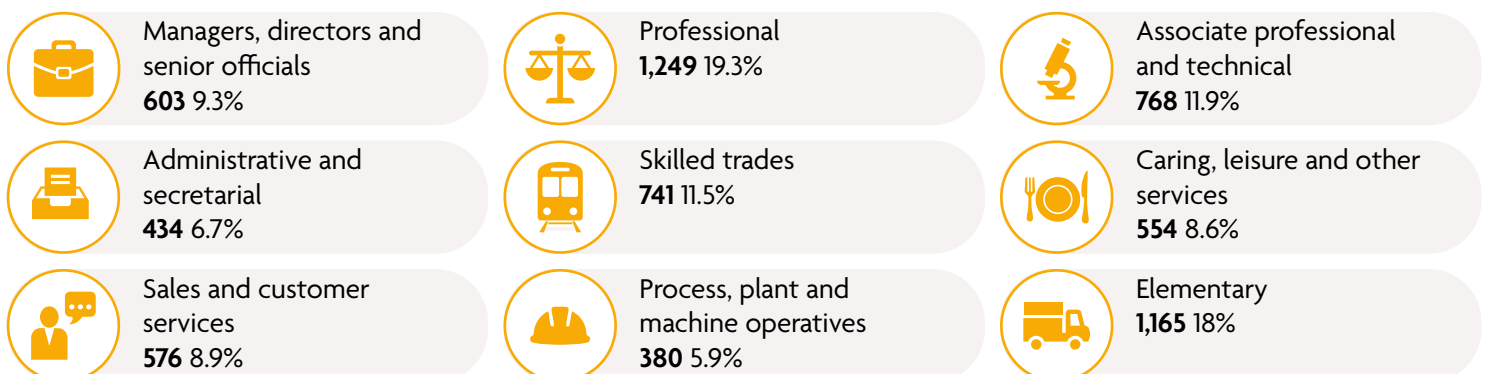
## QUALIFICATION

QUALIFICATION	NUMBER	%
No qualifications	2,054	20%
Level 1 - 1 to 4 GCSEs grade A* to C , Any GCSEs at other grades, O levels or CSEs (any grades), 1 AS level, NVQ level 1, Foundation GNVQ, Basic or Essential Skills	878	8.6%
Level 2 - 5 or more GCSEs (A* to C or 9 to 4), O levels (passes), CSEs (grade 1), School Certification, 1 A level, 2 to 3 AS levels, VCEs, Intermediate or Higher Diploma, Welsh Baccalaureate, Intermediate Diploma, NVQ level 2, Intermediate GNVQ, City and Guilds Craft, BTEC First or General Diploma, RSA Diploma	1,090	10.6%
Apprenticeship	352	3.4%
Level 3 - 2 or more A levels or VCEs, 4 or more AS levels, Higher School Certificate, Progression or Advanced Diploma, Welsh Baccalaureate Advance Diploma, NVQ level 3; Advanced GNVQ, City and Guilds Advanced Craft, ONC, OND, BTEC National, RSA Advanced Diploma	1,320	12.9%
Level 4 - degree (BA, BSc), higher degree (MA, PhD, PGCE), NVQ level 4 to 5, HNC, HND, RSA Higher Diploma, BTEC Higher level, professional qualifications (for example, teaching)	4,196	40.9%
Other: vocational or work-related qualifications, other qualifications achieved in England or Wales, qualifications achieved outside England or Wales (equivalent not stated or unknown)	374	3.6%

## ECONOMIC ACTIVITY



## OCCUPATION



# OUR PARTNERS

We work closely with partners including voluntary, community and faith sector (VCFS) to connect with the local community. Partners deliver vital services such as food banks, befriending services, and advice. We collaborate on joint initiatives, activities and events to enhance community cohesion and improve the lives of local residents. Some partners have been successful in applying for People Powered Places (formerly Community Assemblies) funding and are pivotal in delivering these projects.

**Some key partners that we work with include:**

## Forest Gate Learning Zone

Provides a range of adult learning classes as well as local youth services for teenagers.

## Woodgrange Baptist Church

Runs a foodbank, a lunch club for elders, and a range of services for local families.

## Emmanuel Church

An active community resource, providing a safe haven, foodbank and a range of other community services.

## Minhaj Mosque

Serves the local community with a range of classes, community initiatives, events and activities.



## Woodgrange Saturday Market

Provides local stallholders the opportunity to sell a range of produce and arts and crafts to the local community.

## Forest Gate Community Gardening Group

Provides residents with the opportunity to develop gardening skills through volunteering.

## Forest Gate Festival Group

Plans and delivers the annual street festival in Forest Gate which attracts around 3,000 visitors each year.

## Durning Hall

Hosts a number of local culturally specific community groups. It also has rooms for hire.

## Artists' groups

Forest Gate Library provides an exhibition space for independent local artists.

## Hibiscus Centre

Is a friendly space for young and older members of Afro-Caribbean Community, which provides events and activities.



# NEIGHBOURHOOD INITIATIVES



## The Up Garden

This community project has re-purposed a disused laundry yard, turning it into a sustainable community garden. It has transformed the site into a safe and tranquil space. This partnership project has been led by a local resident. Community stakeholders also play a role in the ongoing maintenance of this project.

## Exhibition Space at The Gate Library

The library offers flexible exhibition space to local and borough-wide, established and up-and-coming new artists. This successful initiative has proved popular among the local community and attracts audiences from far and wide. The library also offers collaborative working between artists and the local community.

## NEWHAM RESIDENTS SURVEY 2023

We will run a new survey that will provide measurement for our eight priorities as part of our Building a Fairer Newham Corporate Plan. The plan will inform how we deliver our key priorities for the next four years.

The Newham Residents Survey 2023 will provide robust measurement of the outcomes relevant to a survey methodology. It will help us to demonstrate and measure the impact of our Corporate Plan. Alongside this, the results from the survey will allow us to understand residents' attitudes and needs, and their satisfaction with the Council and services we deliver. The survey will question a representative sample of residents at a Newham level. We expect at least 1,500 Newham residents to be surveyed across our eight Community Neighbourhood Areas with one of the areas split into two, making a total of nine geographic areas to consider for sampling. The survey will run from May to August and the results will be published later in the year.

# PEOPLE POWERED PLACES

## COMMUNITY ASSEMBLIES ARE NOW



# People

# Powered

# Places

People Powered Places is London Borough of Newham's flagship programme of participatory budgeting.

Previously named Community Assemblies, the programme has become one of the largest participatory budgeting initiatives in the UK since its launch in 2018. It has delivered lasting transformation funding more than 200 projects that have had real impact on the borough, including by improving engagement between the Council and residents.

People Powered Places 2023-25, will be a two-year cycle with another £1.6 million of Neighbourhood Community Infrastructure Levy (CIL) funding allocated across Newham. Each neighbourhood will be allocated £200,000 for the two years.

People Powered Places is part of the Council's commitment to build a "People powered Newham and widening participation" and is fundamental to delivery of the London Borough of Newham's four-year Corporate plan 'Building a Fairer Newham'.



## KEY DATES TO LOOK OUT FOR

<b>May 2023</b>	Residents decide on local priorities.
<b>June - July 2023</b>	Residents discuss solutions to improve their area.
<b>June - August 2023</b>	Residents and local organisations come up with a project proposal to receive funding. Residents can apply for up to £5,000 and local organisations (VCFS) can apply for up to £20,000.
<b>October - November 2023</b>	Residents vote for their favourite projects.
<b>January 2024 - January 2025</b>	Successful projects are delivered by residents and local organisations with support from Newham Council.
<b>May - June 2025</b>	We celebrate our achievements.

Anyone who lives, works or learns in Newham can take part.

## PROJECTS FOR 2022-23

Between 2022 and 2023, each Community Neighbourhood was allocated £100,000 funding for that year to spend on improving the area. Residents had a chance to co-produce local priorities, apply for funding and vote for their favourite projects on Newham Co-create.

In Forest Gate & Maryland, twelve projects were voted for between 2022 and 2023.

# PEOPLE POWERED PLACES

## Clean, green E15 – making Maryland a place to grow

This community-led project has created a food growing area and upgraded existing planters at Henniker Point in Maryland.



## Forest Gate and Maryland Environmental and Sustainability Network

This project provides coordination and support to residents and local groups that are running environmental or sustainability projects.



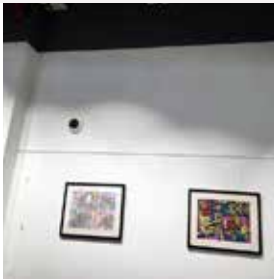
## Wayfinding wall murals

These creative murals guide the community to local play areas and the newly created community green space, Up Garden, in Forest Gate North.



## Shine a Light

This project has improved the lighting in the community exhibition space in Forest Gate Library.



## Let's Repair

This project has so far delivered two workshops to help local residents repair clothing and re-purpose electrical items.



## Play area and green oasis in the town centre

This project has turned the southwest section of the churchyard in Emmanuel Church into a play area and a welcoming, restful space for the public.



## Dance for Wellbeing – linking arts and healthcare services in Forest Gate

This project ran wellbeing workshops weekly at Forest Gate Learning Zone for adults over 60 and those recovering from stroke.

## Food for All

This project supports local food banks by delivering surplus food from local supermarkets.



## Safer Pavements, Greener Pavements

This project installed planters to prevent cars from parking on pavements and pathways and to improve pedestrian access to footpaths.

## Get in touch with nature

This project, empowers anyone working with children to feel comfortable delivering outdoor nature focused sessions.

## Ashok's Vision – youth led nature and biodiversity multi project

This project delivers weekly outdoor learning and planting sessions for young people at Woodgrange Market as well as dedicated mental health training.



## Trees in the High Street

This project grows sustainable trees in planters along the high street to ensure a greener environment.

# MAP OF COMMUNITY ASSEMBLY PROJECTS

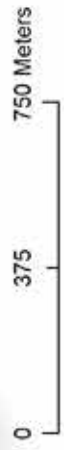
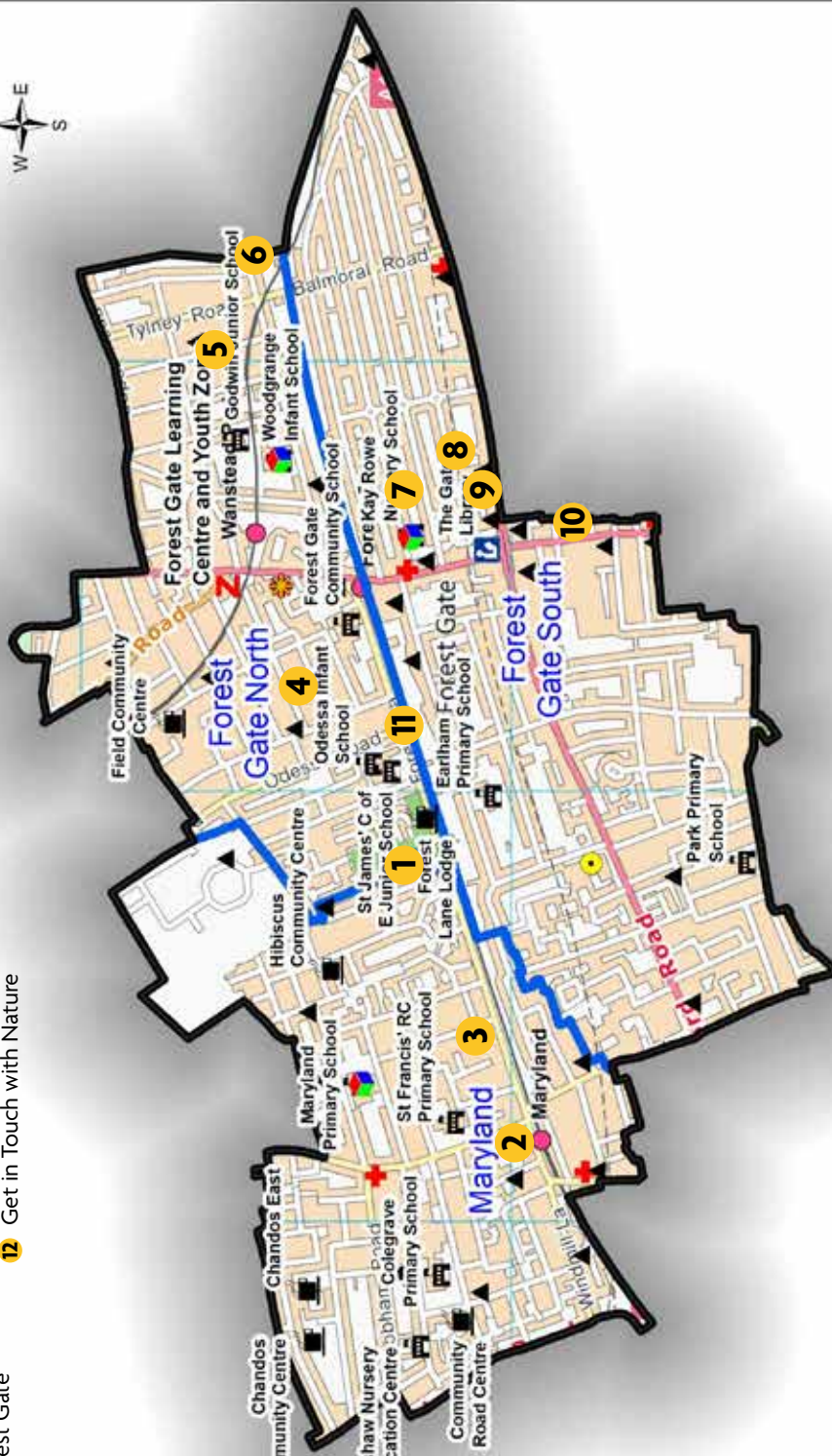
## Forest Gate Community Neighbourhood

- 1** Safer Pavements, Greener Pavements
- 2** Clean, green E15 - Making Maryland a place to grow
- 3** Forest Gate and Maryland Environmental and Sustainability Network
- 4** Wayfinding wall murals
- 5** Dance for Wellbeing: linking arts and healthcare services in Forest Gate
- 6** Trees in the High Street
- 7** Ashok's Vision – Youth led nature and biodiversity multi project
- 8** Shine a Light
- 9** Let's Repair
- 10** A Play Area and Green Oasis in the Town Centre
- 11** Foodbank initiative
- 12** Get in Touch with Nature

**12** Various locations

**Legend**

- Z Adult Learning/Youth Zone
- A Adult Learning Centre
- Y Youth Zone
- L Library
- ▲ Place of Worship
- H Town Hall
- ☐ Community Centre
- 🏥 Health Centre
- H Hospital
- ⚕ GP Surgery
- ★ Youth Centre
- 🎮 Leisure Centre
- 👶 Childrens Centre
- 🎓 School
- 🏟 Park/Playing Field
- 🗺 Ward Boundaries



© Crown copyright and database rights. Ordnance Survey 2022. 100019272. 56.040.1

# LOCAL COUNCILLORS

Councillors are elected by the community to decide how the council should carry out its various activities. They represent public interest as well as individuals living within the ward in which they have been elected to serve a term of office. They have regular contact with the general public through council meetings, telephone calls or surgeries. Surgeries take place regularly and provide an opportunity for any ward resident to talk to their councillor face to face.

## FOREST GATE NORTH

### Councillor Sasha DasGupta

LABOUR and  
CO-OPERATIVE



✉ [Sasha.DasGupta@newham.gov.uk](mailto:Sasha.DasGupta@newham.gov.uk)

### Councillor Rachel Tripp

LABOUR and  
CO-OPERATIVE  
Chair of Strategic  
Development  
Committee



✉ [Rachel.Tripp@newham.gov.uk](mailto:Rachel.Tripp@newham.gov.uk)

## FOREST GATE SOUTH

### Councillor Anamul Islam

LABOUR and  
CO-OPERATIVE



✉ [Anamul.Islam@newham.gov.uk](mailto:Anamul.Islam@newham.gov.uk)

### Councillor Madeleine Sarley Pontin

LABOUR



✉ [Madeleine.SarleyPontin@newham.gov.uk](mailto:Madeleine.SarleyPontin@newham.gov.uk)

### Councillor Winston Vaughan

LABOUR and  
CO-OPERATIVE  
Chair of Council



✉ [Winston.Vaughan@newham.gov.uk](mailto:Winston.Vaughan@newham.gov.uk)

## MARYLAND

### Councillor Carolyn Corben

LABOUR



✉ [Carolyn.Corben@newham.gov.uk](mailto:Carolyn.Corben@newham.gov.uk)

### Councillor Ken Penton

LABOUR and  
CO-OPERATIVE



✉ [Ken.Penton@newham.gov.uk](mailto:Ken.Penton@newham.gov.uk)

Correspondence address for Councillors:

LBN, Newham Dockside, Ground Floor East, 1000 Dockside Road, London, E16 2QU.\*

\*Please address your correspondence to the Councillor that you are writing to

## CONTACT US:

**Jyoti Singh**


North Quadrant Area Manager

**Sandra Conolan**

North Quadrant Area Coordinator

**Glennette Bowles-Dove**

Forest Gate and Maryland Community Neighbourhood  
Senior Officer

 020 3373 0856

 [CN.Forestgate@newham.gov.uk](mailto:CN.Forestgate@newham.gov.uk)