

WE ARE PLAISTOW.

WE ARE NEWHAM.



Community Assembly 2022-23 (Wild Green E13)

Plaistow Community Neighbourhood
Resident Engagement & Participation
May 2023

INTRODUCTION

WARDS

Plaistow Community Neighbourhood is made up of the following wards:

Plaistow North
Plaistow South
Plaistow West & Canning
Town East

ABOUT THE AREA

Geographically located within the heart of Newham, Plaistow is mainly used as a transit link from Stratford to Royal Docks. It is one of the most dynamic centres in London for attracting new businesses and investment, despite being on the north-eastern fringes of the city.



Newham University Hospital, New Vic College, Lister and Cumberland secondary schools all provide employment opportunities which attract people from outside of the neighbourhood.

TRANSPORT

One of the area's best assets is its transport links. It takes 25 minutes to central London on the District or Hammersmith and City lines, and both Stratford and West Ham stations are nearby for the Jubilee and Central lines.

COMMUNITY FACILITIES

Key community facilities in Plaistow are Plaistow Library, Plaistow Community Centre, Jeyes Community Centre, Newham African Caribbean Centre, E13 Mix, Wild Green E13, Greenway Orchard and Newham Leisure Centre.

RESIDENT VIEWS



Hina Shah

“ I have been living in Plaistow for 33 years – it is a nice community with friendly people who are very helpful.

I consider it to be a very safe neighbourhood. Plaistow Park is great for both children and adults, a place I go as part of a walking group. I have had many good experiences living here.

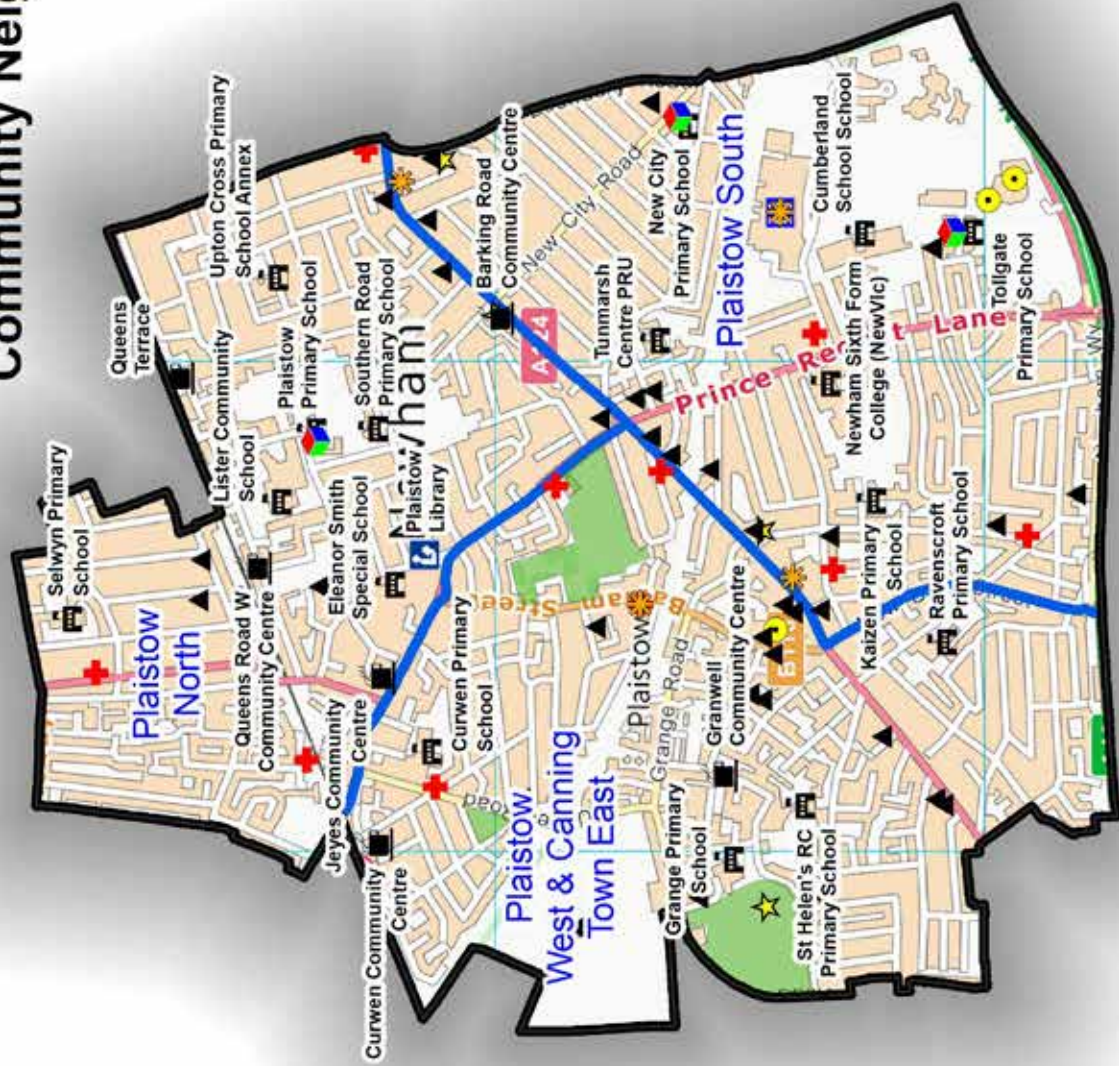


Ludmila Alexandra

“ I have recently moved into the area and I was amazed by all the wonderful events and activities that the neighbourhood team provides.

I feel like I belong here – the library is like my second home. I like to get involved with things to improve Plaistow, such as the community consultation events, the summer reading challenge and how to use the computers.

Plaistow Community Neighbourhood



Legend	
	Adult Learning/Youth Zone
	Adult Learning Centre
	Youth Zone
	Library
	Place of Worship
	Town Hall
	Community Centre
	Health Centre
	Hospital
	GP Surgery
	Youth Centre
	Leisure Centre
	Childrens Centre
	School
	Park/Playing Field
	Ward Boundaries



PLAISTOW NORTH

CENSUS DATA 2021

Every ten years since 1801, the UK has set aside one day for the census - a count of all the people and households. It is the most complete source of information about the population that we have. The latest census was held on Sunday 21 March 2021. A host of questions are asked in the census which includes age, ethnicity, religion, general health, level of qualification, and economic activity. Some results from the 2021 census are set out for wards in Plaistow.



POPULATION: 18,290 (5.2% of Newham's population)

AGE

4 and under	1,354	7.4%	20-24	1,313	7.2%	65-74	976	5.3%
5-9	1,296	7.1%	25-34	3,297	18%	75-84	448	2.4%
10-15	1,532	8.4%	35-49	4,286	23.4%	85 and over	173	0.9%
16-19	968	5.3%	50-64	2,647	14.5%	100 and over	2	0%

ETHNICITY

The Census 2021 gave residents the choice to identify themselves through one of 19 available response options, which included categories with write-in response options. For Newham, there were over 200 additional ethnic identifications as a result.

Asian, Asian British or Asian Welsh	8,751	47.8%
Bangladeshi	3,941	21.5%
Chinese	238	1.3%
Indian	1,753	9.6%
Pakistani	1,849	10.1%
Other	970	5.3%

Black, Black British, Black Welsh, Caribbean or African	3,594	19.6%
African	2,308	12.6%
Caribbean	836	4.6%
Other	450	2.5%

Mixed or Multiple ethnic groups	715	3.9%
White and Asian	118	0.6%
White and Black African	149	0.8%
White and Black Caribbean	194	1.1%
Other	254	1.4%

White	4,381	23.9%
English, Welsh, Scottish, Northern Irish or British	2,031	11.1%
Irish	91	0.5%
Gypsy or Irish Traveller	12	0.1%
Roma	69	0.4%
Other	2,178	11.9%

Other	853	4.7%
Arab	140	0.8%
Other	713	3.9%

RELIGION

No religion	1,810	9.9%
Christian	6,217	34%
Buddhist	130	0.7%
Hindu	710	3.9%
Jewish	17	0.1%
Muslim	7,945	43.4%
Sikh	200	1.1%
Other	99	0.5%
Not answered	1,162	6.4%

GENERAL HEALTH

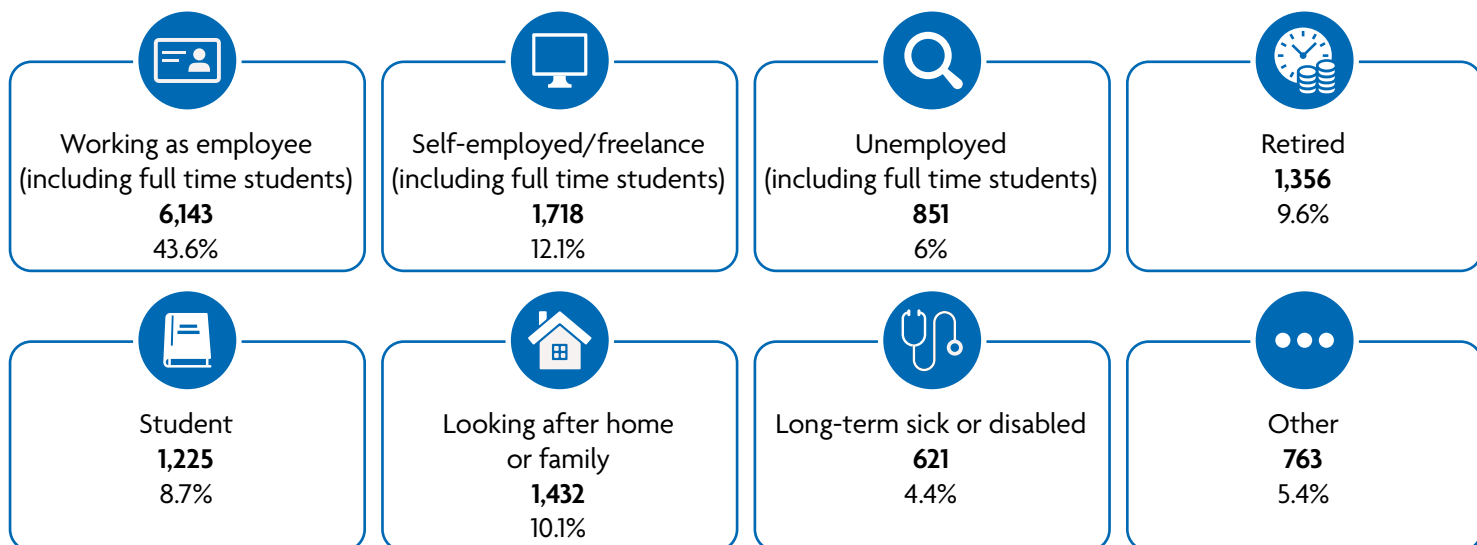
	Very good	9,188	50.2%
	Good	5,970	32.6%
	Fair	2,173	11.9%
	Bad	721	3.9%
	Very bad	238	1.3%

PLAISTOW NORTH

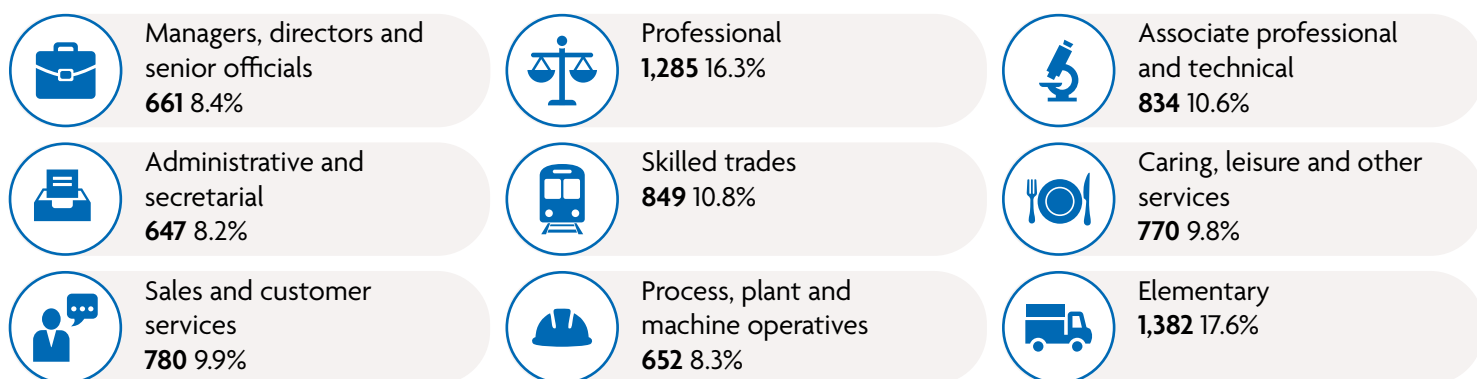
QUALIFICATION

QUALIFICATION	NUMBER	%
No qualifications	3,332	23.6%
Level 1 - 1 to 4 GCSEs grade A* to C , Any GCSEs at other grades, O levels or CSEs (any grades), 1 AS level, NVQ level 1, Foundation GNVQ, Basic or Essential Skills	1,397	9.9%
Level 2 - 5 or more GCSEs (A* to C or 9 to 4), O levels (passes), CSEs (grade 1), School Certification, 1 A level, 2 to 3 AS levels, VCEs, Intermediate or Higher Diploma, Welsh Baccaulaureate, Intermediate Diploma, NVQ level 2, Intermediate GNVQ, City and Guilds Craft, BTEC First or General Diploma, RSA Diploma	1,529	10.8%
Apprenticeship	466	3.3%
Level 3 - 2 or more A levels or VCEs, 4 or more AS levels, Higher School Certificate, Progression or Advanced Diploma, Welsh Baccaulaureate Advance Diploma, NVQ level 3; Advanced GNVQ, City and Guilds Advanced Craft, ONC, OND, BTEC National, RSA Advanced Diploma	1,855	13.2%
Level 4 - degree (BA, BSc), higher degree (MA, PhD, PGCE), NVQ level 4 to 5, HNC, HND, RSA Higher Diploma, BTEC Higher level, professional qualifications (for example, teaching)	4,978	35.3%
Other: vocational or work-related qualifications, other qualifications achieved in England or Wales, qualifications achieved outside England or Wales (equivalent not stated or unknown)	549	3.9%

ECONOMIC ACTIVITY



OCCUPATION



PLAISTOW SOUTH

CENSUS DATA 2021

Every ten years since 1801, the UK has set aside one day for the census - a count of all the people and households. It is the most complete source of information about the population that we have. The latest census was held on Sunday 21 March 2021. A host of questions are asked in the census which includes age, ethnicity, religion, general health, level of qualification, and economic activity. Some results from the 2021 census are set out for wards in Plaistow.



POPULATION: 13,173 (3.8% of Newham's population)

AGE

4 and under	824	6.3%	20-24	909	6.9%	65-74	653	5%
5-9	962	7.3%	25-34	2,177	16.5%	75-84	281	2.1%
10-15	1,255	9.5%	35-49	3,199	24.3%	85 and over	68	0.5%
16-19	696	5.3%	50-64	2,142	16.3%	100 and over	0	0%

ETHNICITY

The Census 2021 gave residents the choice to identify themselves through one of 19 available response options, which included categories with write-in response options. For Newham, there were over 200 additional ethnic identifications as a result.

Asian, Asian British or Asian Welsh	4,637	35.2%	Black, Black British, Black Welsh, Caribbean or African	2,556	19.4%	White	4,592	34.9%
Bangladeshi	2,126	16.1%	African	1,731	13.1%	English, Welsh, Scottish, Northern Irish or British	2,331	17.7%
Chinese	144	1.1%	Caribbean	585	4.4%	Irish	61	0.5%
Indian	583	4.4%	Other	240	1.8%	Gypsy or Irish Traveller	14	0.1%
Pakistani	930	7.1%	Mixed or Multiple ethnic groups	613	4.7%	Roma	98	0.7%
Other	854	6.5%	White and Asian	111	0.8%	Other	2,088	15.8%
			White and Black African	117	0.9%	Other	778	5.9%
			White and Black Caribbean	184	1.4%	Arab	118	0.9%
			Other	201	1.5%	Other	660	5%

RELIGION

No religion	Christian	Buddhist	Hindu	Jewish	Muslim	Sikh	Other	Not answered
1,677 12.7%	5,970 45.3%	85 0.6%	333 2.5%	5 0%	4,157 31.6%	95 0.7%	54 0.4%	797 6.1%

GENERAL HEALTH

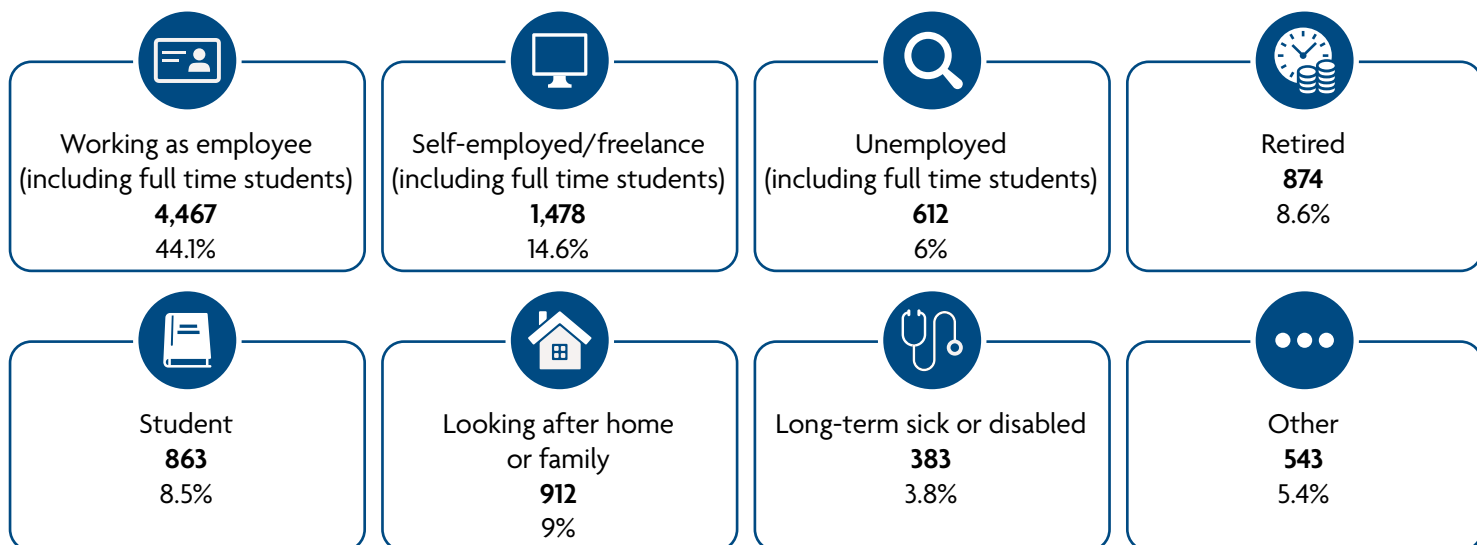
Very good	Good	Fair	Bad	Very bad
6,521 49.5%	4,643 35.2%	1,440 10.9%	432 3.3%	137 1%

PLAISTOW SOUTH

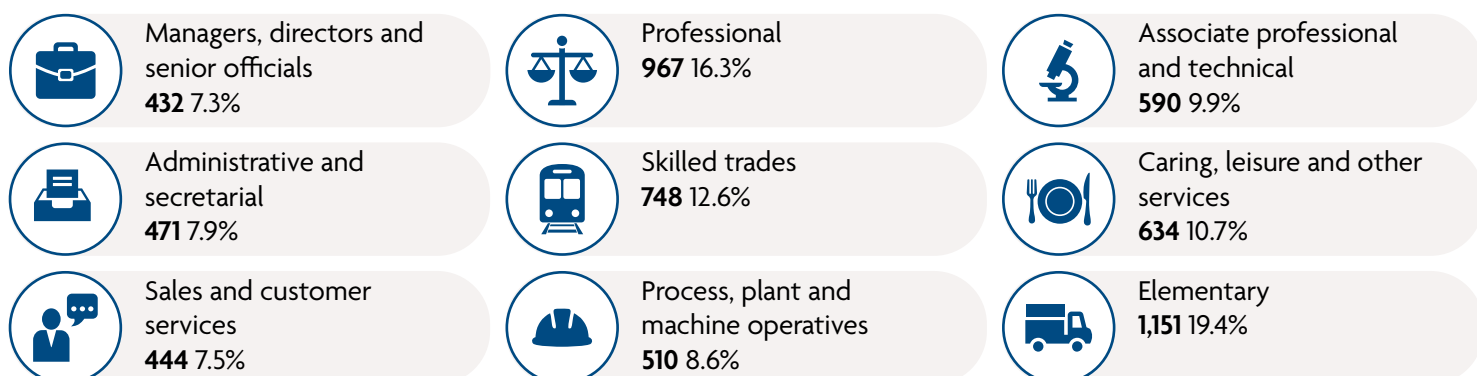
QUALIFICATION

QUALIFICATION	NUMBER	%
No qualifications	2,416	23.8%
Level 1 - 1 to 4 GCSEs grade A* to C , Any GCSEs at other grades, O levels or CSEs (any grades), 1 AS level, NVQ level 1, Foundation GNVQ, Basic or Essential Skills	984	9.7%
Level 2 - 5 or more GCSEs (A* to C or 9 to 4), O levels (passes), CSEs (grade 1), School Certification, 1 A level, 2 to 3 AS levels, VCEs, Intermediate or Higher Diploma, Welsh Baccaulaureate, Intermediate Diploma, NVQ level 2, Intermediate GNVQ, City and Guilds Craft, BTEC First or General Diploma, RSA Diploma	1,094	10.8%
Apprenticeship	401	4%
Level 3 - 2 or more A levels or VCEs, 4 or more AS levels, Higher School Certificate, Progression or Advanced Diploma, Welsh Baccaulaureate Advance Diploma, NVQ level 3; Advanced GNVQ, City and Guilds Advanced Craft, ONC, OND, BTEC National, RSA Advanced Diploma	1,288	12.7%
Level 4 - degree (BA, BSc), higher degree (MA, PhD, PGCE), NVQ level 4 to 5, HNC, HND, RSA Higher Diploma, BTEC Higher level, professional qualifications (for example, teaching)	3,562	35.2%
Other: vocational or work-related qualifications, other qualifications achieved in England or Wales, qualifications achieved outside England or Wales (equivalent not stated or unknown)	387	3.8%

ECONOMIC ACTIVITY



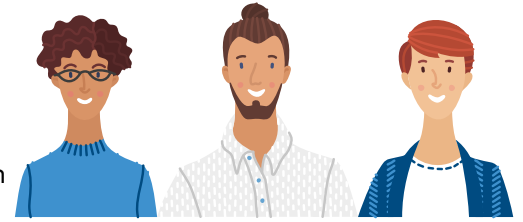
OCCUPATION



PLAISTOW WEST & CANNING TOWN

CENSUS DATA 2021

Every ten years since 1801, the UK has set aside one day for the census - a count of all the people and households. It is the most complete source of information about the population that we have. The latest census was held on Sunday 21 March 2021. A host of questions are asked in the census which includes age, ethnicity, religion, general health, level of qualification, and economic activity. Some results from the 2021 census are set out for wards in Plaistow.



POPULATION: 16,696 (4.8% of Newham's population)

AGE

4 and under	1,102	6.6%	20-24	1,278	7.7%	65-74	789	4.7%
5-9	1,151	6.9%	25-34	2,966	17.8%	75-84	362	2.2%
10-15	1,315	7.9%	35-49	3,930	23.5%	85 and over	151	0.9%
16-19	900	5.4%	50-64	2,750	16.5%	100 and over	1	0%

ETHNICITY

The Census 2021 gave residents the choice to identify themselves through one of 19 available response options, which included categories with write-in response options. For Newham, there were over 200 additional ethnic identifications as a result.

Asian, Asian British or Asian Welsh	4,747	28.4%	Black, Black British, Black Welsh, Caribbean or African	3,637	21.8%	White	6,368	38.1%
Bangladeshi	2,375	14.2%	African	2,506	15%	English, Welsh, Scottish, Northern Irish or British	3,357	20.1%
Chinese	267	1.6%	Caribbean	758	4.5%	Irish	93	0.6%
Indian	506	3%	Other	373	2.2%	Gypsy or Irish Traveller	7	0%
Pakistani	872	5.2%	Mixed or Multiple ethnic groups	970	5.8%	Roma	107	0.6%
Other	727	4.4%	White and Asian	128	0.8%	Other	2,804	16.8%
			White and Black African	228	1.4%	Other	971	5.8%
			White and Black Caribbean	290	1.7%	Arab	234	1.4%
			Other	324	1.9%	Other	737	4.4%

RELIGION

No religion	Christian	Buddhist	Hindu	Jewish	Muslim	Sikh	Other	Not answered
2,696	7,780	101	249	13	4,581	125	86	1,064
16.1%	46.6%	0.6%	1.5%	0.1%	27.4%	0.7%	0.5%	6.4%

GENERAL HEALTH

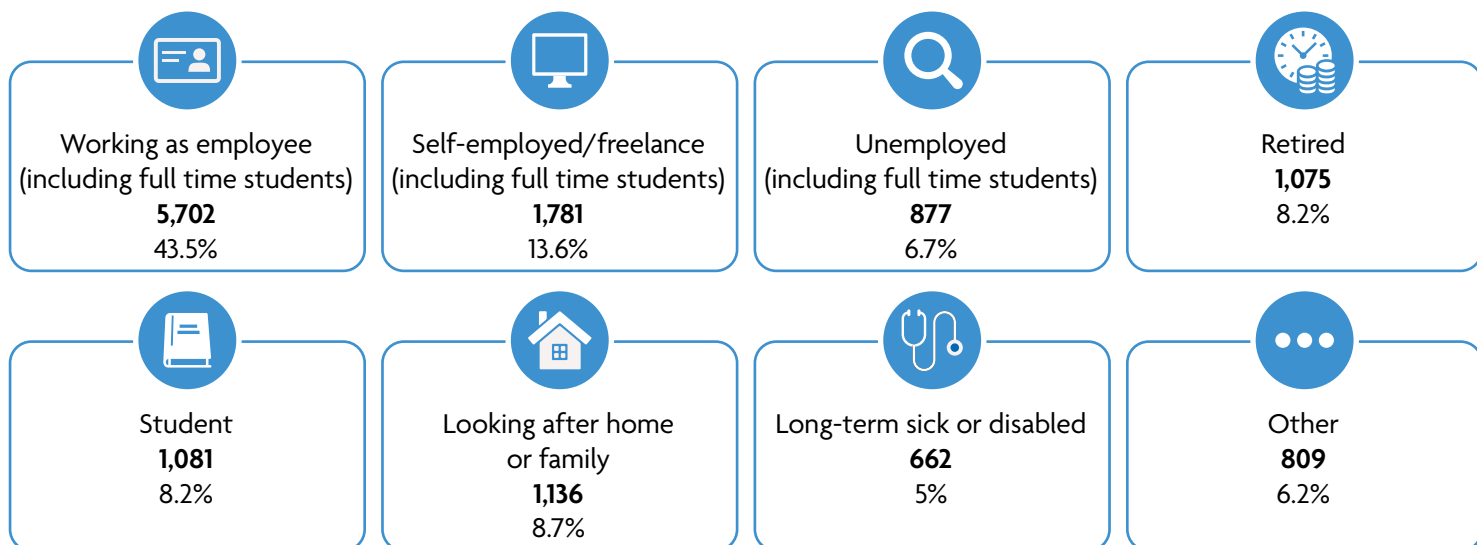
Very good	Good	Fair	Bad	Very bad
8,354	5,557	1,880	649	256
50%	33.3%	11.3%	3.9%	1.5%

PLAISTOW WEST & CANNING TOWN

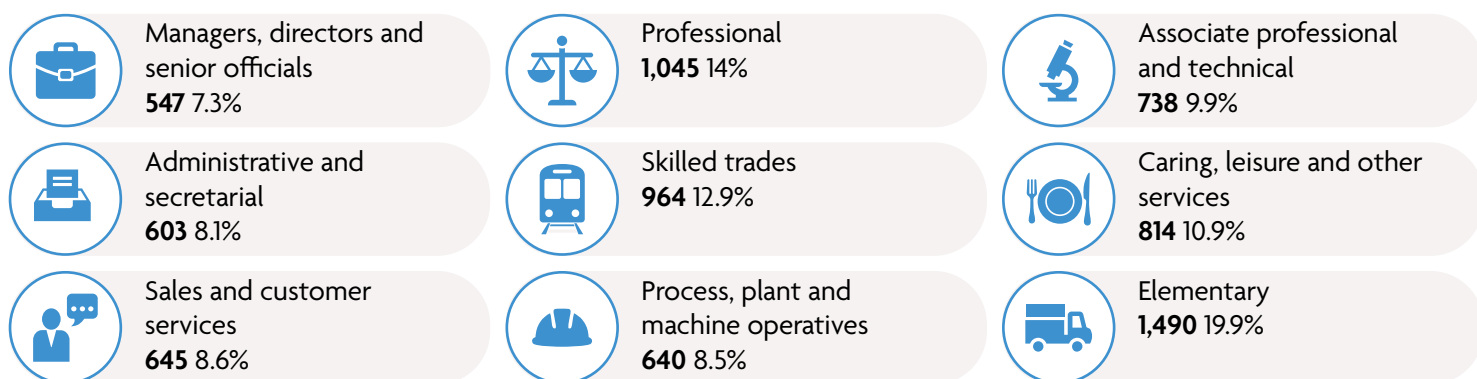
QUALIFICATION

QUALIFICATION	NUMBER	%
No qualifications	3,151	24%
Level 1 - 1 to 4 GCSEs grade A* to C , Any GCSEs at other grades, O levels or CSEs (any grades), 1 AS level, NVQ level 1, Foundation GNVQ, Basic or Essential Skills	1,358	10.3%
Level 2 - 5 or more GCSEs (A* to C or 9 to 4), O levels (passes), CSEs (grade 1), School Certification, 1 A level, 2 to 3 AS levels, VCEs, Intermediate or Higher Diploma, Welsh Baccaulaureate, Intermediate Diploma, NVQ level 2, Intermediate GNVQ, City and Guilds Craft, BTEC First or General Diploma, RSA Diploma	1,410	10.7%
Apprenticeship	571	4.3%
Level 3 - 2 or more A levels or VCEs, 4 or more AS levels, Higher School Certificate, Progression or Advanced Diploma, Welsh Baccaulaureate Advance Diploma, NVQ level 3; Advanced GNVQ, City and Guilds Advanced Craft, ONC, OND, BTEC National, RSA Advanced Diploma	1,706	13%
Level 4 - degree (BA, BSc), higher degree (MA, PhD, PGCE), NVQ level 4 to 5, HNC, HND, RSA Higher Diploma, BTEC Higher level, professional qualifications (for example, teaching)	4,450	33.9%
Other: vocational or work-related qualifications, other qualifications achieved in England or Wales, qualifications achieved outside England or Wales (equivalent not stated or unknown)	481	3.7%

ECONOMIC ACTIVITY



OCCUPATION



OUR PARTNERS

We work closely with partners including voluntary, community and faith sector (VCFS) to connect with the local community. Partners deliver vital services such as food banks, befriending services, and advice. We collaborate on joint initiatives, activities and events to enhance community cohesion and improve the lives of local residents. Some partners have been successful in applying for People Powered Places (formerly Community Assemblies) funding and are pivotal in delivering these projects.

Some key partners that we work with include:

Rights Equality in Newham (REIN)

Works in partnership with many community initiatives e.g. Shape Newham, Barbers Alleyway, youth provision in libraries and the summer youth holiday activities and food programme (HAF) programme.



Urban Wilderness Regeneration (Plaistow Eco Hub)

Residents group that runs a community garden and has applied for funding to develop a sustainable community green space.

Newham African Caribbean Community Centre

Manages one of Newham's community centres. It has a long-standing relationship with the neighbourhood team. In partnership, they develop community cohesion through safety panels, health initiatives, and community outreach.

Plaistow Residents Group

A volunteer resident group that offers support to young people, crime prevention and community initiatives.



Newham Muslim Forum

Represents Newham's Muslim community and is fully engaged in the Community Assembly programme.



Plaistow South Big Local

Third sector partner that has been involved with the Plaistow Festival, Newham Unlocked, Glen Road Hospital Project and the Greenway Orchard.

Indian Care Community Association of Newham

Community organisation that supports older residents from the Hindu community. It runs community projects, such as walking groups, focus groups and health initiatives. The group regularly performs at community festivals and events.

London Ghana Seventh Day Adventist Church

Runs a food bank and supports the neighbourhood with litter picking and youth engagement.



UKIM Masjid Ibrahim & Islamic Centre

Assists with community youth projects and community assembly projects.



True Ambassadors

A charity that provides a wide range of support services such as legal advice, housing advice, and family disputes. Also provides health activities and advice.

NEIGHBOURHOOD INITIATIVES



Mr Blue Sky

A new decorative feature has been added to the council-owned shopping parade on Plaistow High Street. The theme of this installation is clouds, which was chosen by the resident design committee to pay homage to historical resident, Luke Howard, who is credited with naming the different types of clouds. In addition, repairs, maintenance and creative additions have been made to the adjoining car park to brighten up the space and provide increased surveillance.



Place of Play – Plaistow Park

A mural has been designed and painted with young people from Lister School and REIN youth club.

Plaistow Hub Regeneration Programme

This project is a £62m mixed-use residential-led scheme in Plaistow. The hub will create a new local centre near Plaistow underground station, as well as two separate residential buildings, a new library, neighbourhood centre, supermarket, gym, and café. It will also create a new piazza and improve the streetscape by linking Plaistow station (a listed building) to the new development and surrounding area. This project is due to be completed in 2024.



A Place for Reflection and Community

The council has designed a Place of Reflection in Plaistow Park in memory of residents who lost their lives from COVID-19, and in honour of frontline staff who supported Newham's most vulnerable residents throughout the pandemic. It has carefully been designed as a space to encourage reflection, mental wellbeing, unity, and social interaction. It will be fully inclusive, accessible, and designed for people of all faiths and cultures.

NEWHAM RESIDENTS SURVEY 2023

We will run a new survey that will provide measurement for our eight priorities as part of our Building a Fairer Newham Corporate Plan. The plan will inform how we deliver our key priorities for the next four years.

The Newham Residents Survey 2023 will provide robust measurement of the outcomes relevant to a survey methodology. It will help us to demonstrate and measure the impact of our Corporate Plan. Alongside this, the results from the survey will allow us to understand residents' attitudes and needs, and their satisfaction with the Council and services we deliver. The survey will question a representative sample of residents at a Newham level. We expect at least 1,500 Newham residents to be surveyed across our eight Community Neighbourhood Areas with one of the areas split into two, making a total of nine geographic areas to consider for sampling. The survey will run from May to August and the results will be published later in the year.

PEOPLE POWERED PLACES

COMMUNITY ASSEMBLIES ARE NOW



People

Powered

Places

People Powered Places is London Borough of Newham's flagship programme of participatory budgeting.

Previously named Community Assemblies, the programme has become one of the largest participatory budgeting initiatives in the UK since its launch in 2018. It has delivered lasting transformation funding more than 200 projects that have had real impact on the borough, including by improving engagement between the Council and residents.

People Powered Places 2023-25, will be a two-year cycle with another £1.6 million of Neighbourhood Community Infrastructure Levy (CIL) funding allocated across Newham. Each neighbourhood will be allocated £200,000 for the two years.

People Powered Places is part of the Council's commitment to build a "People powered Newham and widening participation" and is fundamental to delivery of the London Borough of Newham's four-year Corporate plan 'Building a Fairer Newham'.



KEY DATES TO LOOK OUT FOR

May 2023	Residents decide on local priorities.
June - July 2023	Residents discuss solutions to improve their area.
June - August 2023	Residents and local organisations come up with a project proposal to receive funding. Residents can apply for up to £5,000 and local organisations (VCFS) can apply for up to £20,000.
October - November 2023	Residents vote for their favourite projects.
January 2024 - January 2025	Successful projects are delivered by residents and local organisations with support from Newham Council.
May - June 2025	We celebrate our achievements.

Anyone who lives, works or learns in Newham can take part.

PROJECTS FOR 2022-23

Between 2022 and 2023, each Community Neighbourhood was allocated £100,000 funding for that year to spend on improving the area. Residents had a chance to co-produce local priorities, apply for funding and vote for their favourite projects on Newham Co-create.

In Plaistow, ten projects were voted for between 2022 and 2023.

PEOPLE POWERED PLACES

Safer Streets – Plaistow Neighbourhood Watch

This project will deliver safety training, and run community engagement events in the Plaistow area. The vision is to create a proactive Neighbourhood Watch scheme.



Little Free Pantry

“Take what you need, leave what you can.” This initiative delivers food parcels to those who can’t always access food banks. The little free pantry will provide free, local food to those in need.

Plaistow Eco Hub (First Avenue Urban Wilderness Regeneration)

This project will enhance an existing green space and will help nurture its biodiversity. It will also provide an indoor and outdoor venue to host different community activities along with food growing and sustainability.



Revamp Beaumont Road Green

This green area will be revamped to include the installation of planters, trees and bulbs, as well as repairing the pathway. It will be delivered by Tunmarsh Lane School.



Wild Green E13 Community Garden

New features include:

- A full-size mural
- Structures to harvest rainwater
- A larger composter to encourage recycling
- Community events and sports initiatives
- Arts and crafts workshops for children led by local artists



Plaistow Park water fountain

Repair water fountain and install new benches.



New City Green teenagers play

Replace the missing logs and install a basketball hoop and a goal post.



Swings in Plaistow Park

Repair the missing swing in Plaistow Park with a two-seater swing.



Social Alleyways

Add planters and murals to the alleys between Plaistow Park, Dundee Road and Perth Road.

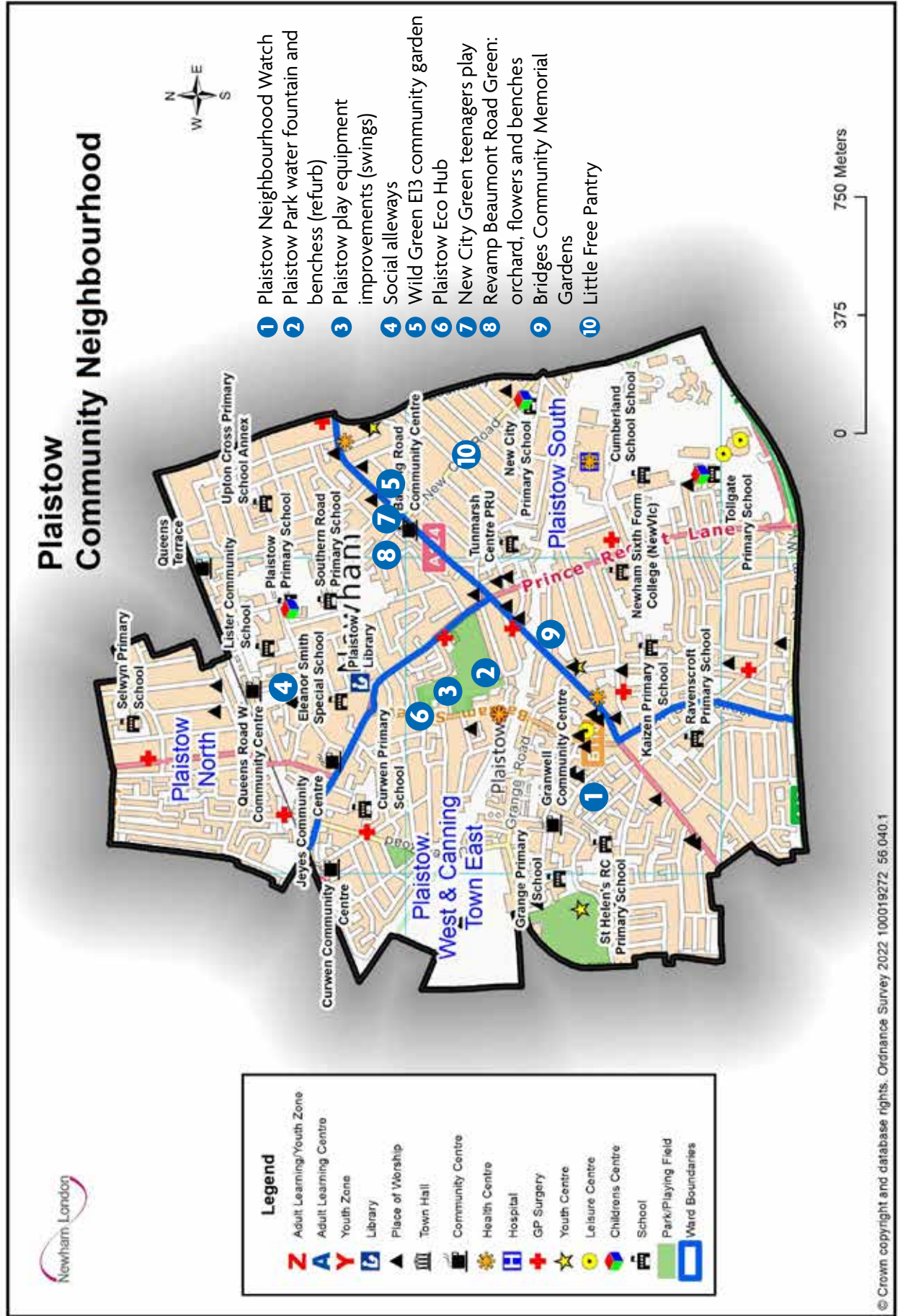


Bridges Community Memorial Garden

This project will reclaim an unused local space (between Memorial Church and the Swift Centre on Barking Road) to co-create a memorial garden with the homeless and vulnerably housed people who form the service user community at Bridges Homeless Support.



MAP OF COMMUNITY ASSEMBLY PROJECTS



LOCAL COUNCILLORS

Councillors are elected by the community to decide how the council should carry out its various activities. They represent public interest as well as individuals living within the ward in which they have been elected to serve a term of office. They have regular contact with the general public through council meetings, telephone calls or surgeries. Surgeries take place regularly and provide an opportunity for any ward resident to talk to their councillor face to face.

PLAISTOW NORTH

Councillor Zulfiqar Ali

LABOUR

Cabinet member
for Finance and
Resources



✉ Zulfiqar.Ali@newham.gov.uk

Councillor Joy Laguda MBE

LABOUR



✉ Joy.Laguda@newham.gov.uk

Councillor Daniel Lee-Phakoe

LABOUR

Scrutiny
Commission Chair



✉ Daniel.Lee-Phakoe@newham.gov.uk

PLAISTOW SOUTH

Councillor Carleene Lee-Phakoe

LABOUR and
CO-OPERATIVE

Cabinet
Member for
Housing Needs,
Homelessness and Private Rented
Sector



✉ Carleene.Lee-Phakoe@newham.gov.uk

Councillor Jane Barbara Lofthouse

LABOUR and
CO-OPERATIVE



✉ Jane.Lofthouse@newham.gov.uk

Councillor Neil Wilson

LABOUR and
CO-OPERATIVE

Cabinet Member
for Health and
Adult Social Care



✉ Neil.Wilson@newham.gov.uk

PLAISTOW WEST & CANNING TOWN

Councillor Dina Hossain

LABOUR



✉ Dina.Hossain@newham.gov.uk

Councillor John Morris

LABOUR and
CO-OPERATIVE

Deputy Cabinet
Member for
Highways and
Sustainable Transport



✉ John.Morris@newham.gov.uk

Councillor Simon Rush

LABOUR and
CO-OPERATIVE



✉ Simon.Rush@newham.gov.uk

Correspondence address for Councillors:

LBN, Newham Dockside, Ground Floor East, 1000 Dockside Road, London, E16 2QU.*

*Please address your correspondence to the Councillor that you are writing to


CONTACT US:

Syed Haque

Community Neighbourhood Area Manager

Fathema Rahaman

Community Neighbourhood Senior Officer

 020 3373 0859

 CN.Plaistow@newham.gov.uk