

WE ARE STRATFORD & WEST HAM.

WE ARE NEWHAM.

Community Assembly Project 2021-22 (Love E15 – Anti-fly tipping project)

**Stratford & West Ham Community Neighbourhood
Resident Engagement & Participation**

May 2023

INTRODUCTION

WARDS

Stratford and West Ham Community Neighbourhood is made up of the following wards:

Stratford
Stratford Olympic Park
West Ham

ABOUT THE AREA

The Stratford, Olympic East Village and West Ham neighbourhood has changed rapidly over the years. Once the most deprived area in London, it is now the most regenerated and best connected district. With its vibrant new business community and integrated transport hub, it contributes to the local economy through creating new employment opportunities, as well as being a cultural and leisure hub.

The neighbourhood offers a fantastic new way to enjoy living and working

in the capital with its shopping, sports facilities, entertainment venues, open spaces, education facilities, a library and opportunities to participate in local democracy.

TRANSPORT

Stratford is a major multi-level interchange station served by the London Underground, London Overground, Docklands Light Railway (DLR) and is also a National Rail station on the West Anglia Main Line and the Great Eastern Main Line. It is the busiest station on the tube network that is not located in Travelcard Zone 1 and it is the UK's 5th most used station. West Ham station on Manor Road is served by the London Underground Jubilee, Hammersmith and City and District tube lines.

COMMUNITY FACILITIES

The key community spaces include Stratford Library, Old Stratford Town Hall, Stratford Park and West Ham Park, two community gardens, four council run community centres, Discover Children's Centre, Stratford Theatre East and Stratford Youth Zone. These buildings provide environments that are inspiring, adaptable and designed to accommodate collaborative working, knowledge sharing and deliver community cohesion, social inclusion, community engagement and equality and diversity.

Queen Elizabeth Olympic Park is home to world class venues, parklands, and playgrounds. London Legacy Development Corporation currently manages the legacy of the park, however planning powers will be handed back to Newham in 2024.

RESIDENT VIEWS



Rosamond Murdoch

“ I have lived in Stratford since 2018. I love the strong history of the area, from industry to heavy bombing in the Blitz.

Our neighbours formed a WhatsApp group during lockdown and we've gone on to install planters, run community garden sessions and arranged to paint this huge mural of a parakeet. The parakeets live in West Ham Park but also symbolises welcoming newcomers to our area.

The shops are a strong point for us – we have far better produce available from our corner shops than from the chains, and our florist, Sewell's, is one of Newham's oldest family businesses.



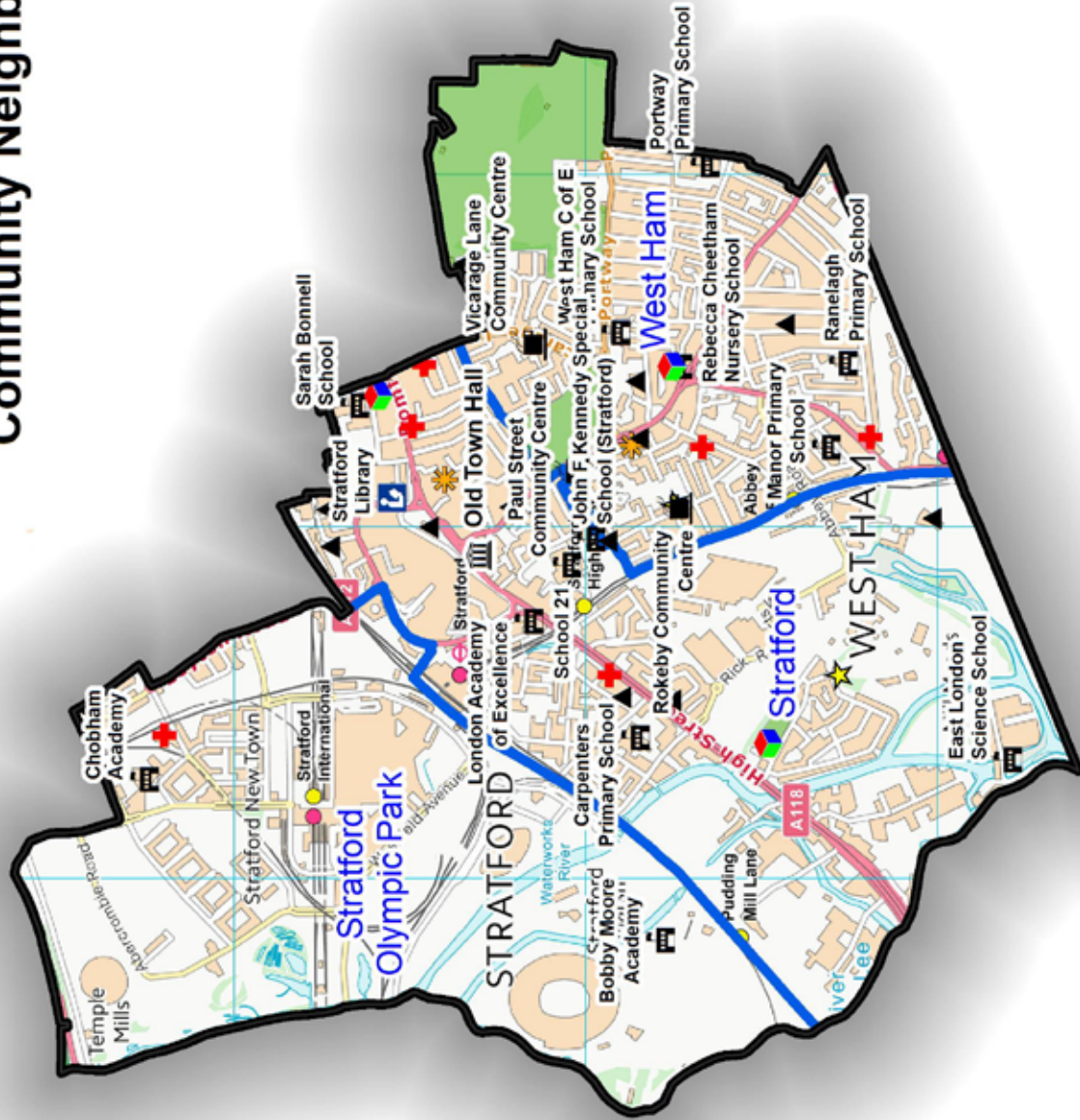
Dan Scott

“ I'm Dan and I live on the Mill Meads Estate with my wife and our two daughters.

We love the neighbourliness and growing sense of community here – greetings as we walk down the street, deep conversations on our doorsteps and joy in our green spaces.

The diversity and vibrancy of life here are particularly seen in the neighbourhood events we run as a local church, for everyone in the local area. Laughter, conversation, children playing, good food and drink and brightening up where we live is everything a community should be about.

Stratford & West Ham Community Neighbourhood



| Legend | |
|--------|---------------------------|
| Z | Adult Learning/Youth Zone |
| A | Adult Learning Centre |
| Y | Youth Zone |
| 📖 | Library |
| ⚓ | Place of Worship |
| 🏛️ | Town Hall |
| 🏠 | Community Centre |
| 🏥 | Health Centre |
| 🏨 | Hospital |
| 🏠 | GP Surgery |
| 🌟 | Youth Centre |
| 🎡 | Leisure Centre |
| 🎨 | Childrens Centre |
| 🎓 | School |
| 🌳 | Park/Playing Field |
| 📏 | Ward Boundaries |



STRATFORD

CENSUS DATA 2021

Every ten years since 1801, the UK has set aside one day for the census - a count of all the people and households. It is the most complete source of information about the population that we have. The latest census was held on Sunday 21 March 2021. A host of questions are asked in the census which includes age, ethnicity, religion, general health, level of qualification, and economic activity. Some results from the 2021 census are set out for wards in Stratford & West Ham.



POPULATION: 15,742 (4.5% of Newham's population)

AGE

| | | | | | | | | |
|-------------|------------|------|-------|--------------|-------|--------------|------------|------|
| 4 and under | 834 | 5.3% | 20-24 | 1,824 | 11.6% | 65-74 | 413 | 2.6% |
| 5-9 | 678 | 4.3% | 25-34 | 5,347 | 33.9% | 75-84 | 213 | 1.4% |
| 10-15 | 682 | 4.3% | 35-49 | 3,557 | 22.6% | 85 and over | 50 | 0.3% |
| 16-19 | 518 | 3.3% | 50-64 | 1,636 | 10.4% | 100 and over | 0 | 0% |

ETHNICITY

The Census 2021 gave residents the choice to identify themselves through one of 19 available response options, which included categories with write-in response options. For Newham, there were over 200 additional ethnic identifications as a result.

| | | | | | | | | |
|--|--------------|--------------|--|--------------|--------------|---|--------------|--------------|
| Asian, Asian British or Asian Welsh | 4,427 | 28.1% | Black, Black British, Black Welsh, Caribbean or African | 2,759 | 17.5% | White | 6,731 | 42.8% |
| Bangladeshi | 1,405 | 8.9% | African | 1,808 | 11.5% | English, Welsh, Scottish, Northern Irish or British | 3,196 | 20.3% |
| Chinese | 896 | 5.7% | Caribbean | 659 | 4.2% | Irish | 195 | 1.2% |
| Indian | 1,048 | 6.7% | Other | 292 | 1.9% | Gypsy or Irish Traveller | 13 | 0.1% |
| Pakistani | 516 | 3.3% | Mixed or Multiple ethnic groups | 1,006 | 6.4% | Roma | 186 | 1.2% |
| Other | 562 | 3.6% | White and Asian | 217 | 1.4% | Other | 3,141 | 20% |
| | | | White and Black African | 185 | 1.2% | Other | 819 | 5.2% |
| | | | White and Black Caribbean | 245 | 1.6% | Arab | 221 | 1.4% |
| | | | Other | 359 | 2.3% | Other | 598 | 3.8% |

RELIGION

| | | | | | | | | | | | | | | | | | | | | | | | | | | |
|-------------|--------------|-------|-----------|--------------|-------|----------|------------|----|-------|------------|------|--------|-----------|------|--------|--------------|-------|------|-----------|------|-------|------------|------|--------------|--------------|------|
| No religion | 4,509 | 28.6% | Christian | 5,717 | 36.3% | Buddhist | 159 | 1% | Hindu | 712 | 4.5% | Jewish | 36 | 0.2% | Muslim | 3,062 | 19.4% | Sikh | 93 | 0.6% | Other | 135 | 0.9% | Not answered | 1,321 | 8.4% |
|-------------|--------------|-------|-----------|--------------|-------|----------|------------|----|-------|------------|------|--------|-----------|------|--------|--------------|-------|------|-----------|------|-------|------------|------|--------------|--------------|------|

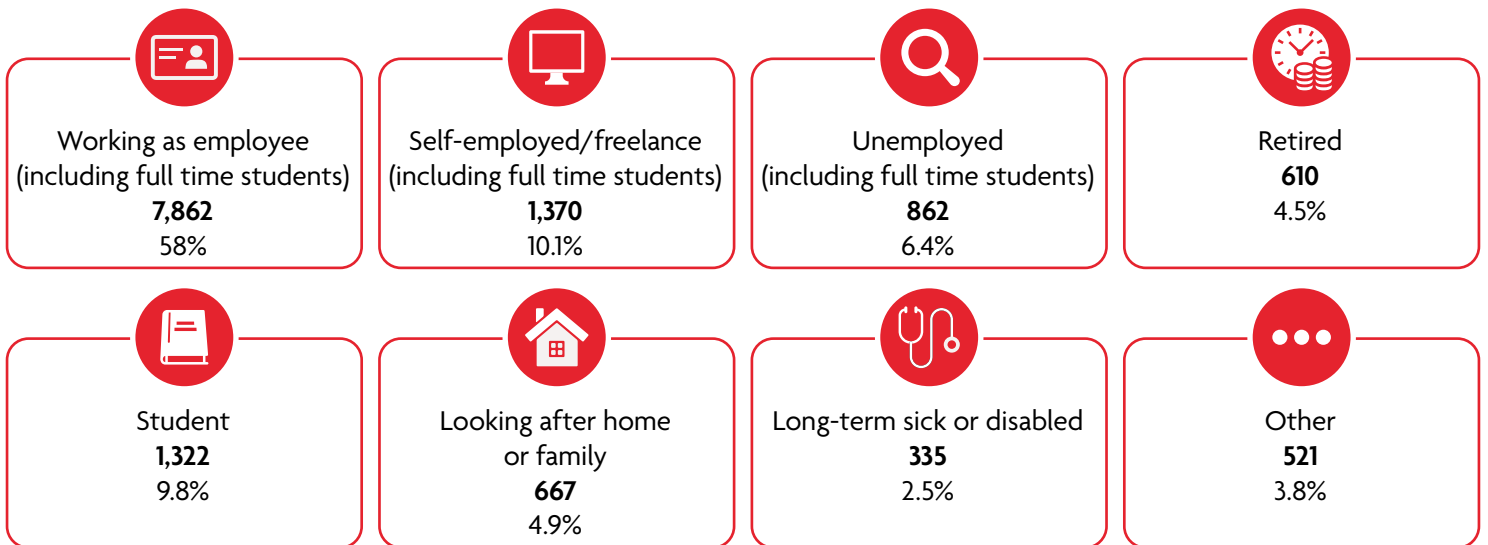
GENERAL HEALTH

| | | | | | | | | | | | | | | | | | | | |
|--|-----------|--------------|-------|--|------|--------------|-------|--|------|--------------|------|--|-----|------------|------|--|----------|------------|------|
| | Very good | 8,722 | 55.4% | | Good | 5,179 | 32.9% | | Fair | 1,358 | 8.6% | | Bad | 347 | 2.2% | | Very bad | 134 | 0.9% |
|--|-----------|--------------|-------|--|------|--------------|-------|--|------|--------------|------|--|-----|------------|------|--|----------|------------|------|

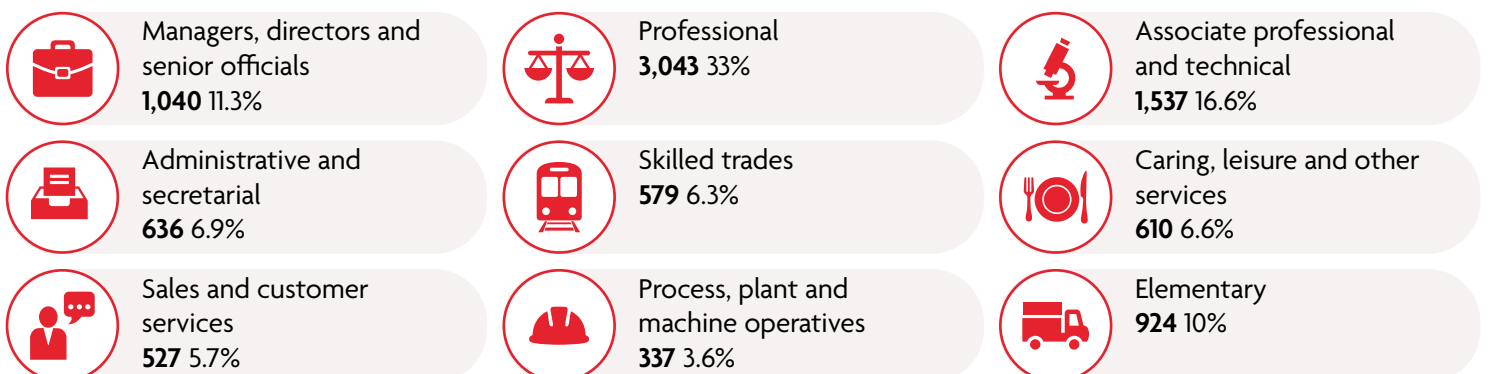
QUALIFICATION

| QUALIFICATION | NUMBER | % |
|--|--------|-------|
| No qualifications | 1,585 | 11.7% |
| Level 1 - 1 to 4 GCSEs grade A* to C , Any GCSEs at other grades, O levels or CSEs (any grades), 1 AS level, NVQ level 1, Foundation GNVQ, Basic or Essential Skills | 810 | 6% |
| Level 2 - 5 or more GCSEs (A* to C or 9 to 4), O levels (passes), CSEs (grade 1), School Certification, 1 A level, 2 to 3 AS levels, VCEs, Intermediate or Higher Diploma, Welsh Baccaulaureate, Intermediate Diploma, NVQ level 2, Intermediate GNVQ, City and Guilds Craft, BTEC First or General Diploma, RSA Diploma | 998 | 7.4% |
| Apprenticeship | 298 | 2.2% |
| Level 3 - 2 or more A levels or VCEs, 4 or more AS levels, Higher School Certificate, Progression or Advanced Diploma, Welsh Baccaulaureate Advance Diploma, NVQ level 3; Advanced GNVQ, City and Guilds Advanced Craft, ONC, OND, BTEC National, RSA Advanced Diploma | 1,688 | 12.5% |
| Level 4 - degree (BA, BSc), higher degree (MA, PhD, PGCE), NVQ level 4 to 5, HNC, HND, RSA Higher Diploma, BTEC Higher level, professional qualifications (for example, teaching) | 7,774 | 57.4% |
| Other: vocational or work-related qualifications, other qualifications achieved in England or Wales, qualifications achieved outside England or Wales (equivalent not stated or unknown) | 395 | 2.9% |

ECONOMIC ACTIVITY



OCCUPATION



STRATFORD OLYMPIC PARK

CENSUS DATA 2021

Every ten years since 1801, the UK has set aside one day for the census - a count of all the people and households. It is the most complete source of information about the population that we have. The latest census was held on Sunday 21 March 2021. A host of questions are asked in the census which includes age, ethnicity, religion, general health, level of qualification, and economic activity. Some results from the 2021 census are set out for wards in Stratford & West Ham.



POPULATION: 11,862 (3.4% of Newham's population)

AGE

| | | | | | | | | |
|-------------|-----|------|-------|-------|-------|--------------|-----|------|
| 4 and under | 621 | 5.2% | 20-24 | 1,597 | 13.5% | 65-74 | 104 | 0.9% |
| 5-9 | 582 | 4.9% | 25-34 | 4,773 | 40.3% | 75-84 | 25 | 0.2% |
| 10-15 | 595 | 5% | 35-49 | 2,297 | 19.4% | 85 and over | 8 | 0.1% |
| 16-19 | 657 | 5.5% | 50-64 | 593 | 5% | 100 and over | 0 | 0% |

ETHNICITY

The Census 2021 gave residents the choice to identify themselves through one of 19 available response options, which included categories with write-in response options. For Newham, there were over 200 additional ethnic identifications as a result.

| | | | | | | | | |
|--|--------------|--------------|--|--------------|--------------|---|--------------|--------------|
| Asian, Asian British or Asian Welsh | 3,179 | 26.8% | Black, Black British, Black Welsh, Caribbean or African | 1,758 | 14.8% | White | 5,424 | 45.7% |
| Bangladeshi | 558 | 4.7% | African | 1,216 | 10.3% | English, Welsh, Scottish, Northern Irish or British | 3,218 | 27.1% |
| Chinese | 1,039 | 8.8% | Caribbean | 293 | 2.5% | Irish | 191 | 1.6% |
| Indian | 703 | 5.9% | Other | 249 | 2.1% | Gypsy or Irish Traveller | 6 | 0.1% |
| Pakistani | 462 | 3.9% | Mixed or Multiple ethnic groups | 789 | 6.7% | Roma | 56 | 0.5% |
| Other | 417 | 3.5% | White and Asian | 213 | 1.8% | Other | 1,953 | 16.5% |
| | | | White and Black African | 129 | 1.1% | Other | 710 | 6% |
| | | | White and Black Caribbean | 138 | 1.2% | Arab | 258 | 2.2% |
| | | | Other | 309 | 2.6% | Other | 452 | 3.8% |

RELIGION

| | | | | | | | | |
|-------------|-----------|----------|-------|--------|--------|------|-------|--------------|
| No religion | Christian | Buddhist | Hindu | Jewish | Muslim | Sikh | Other | Not answered |
| 4,803 | 3,255 | 131 | 388 | 67 | 2,121 | 74 | 73 | 947 |
| 40.5% | 27.4% | 1.1% | 3.3% | 0.6% | 17.9% | 0.6% | 0.6% | 8% |

GENERAL HEALTH

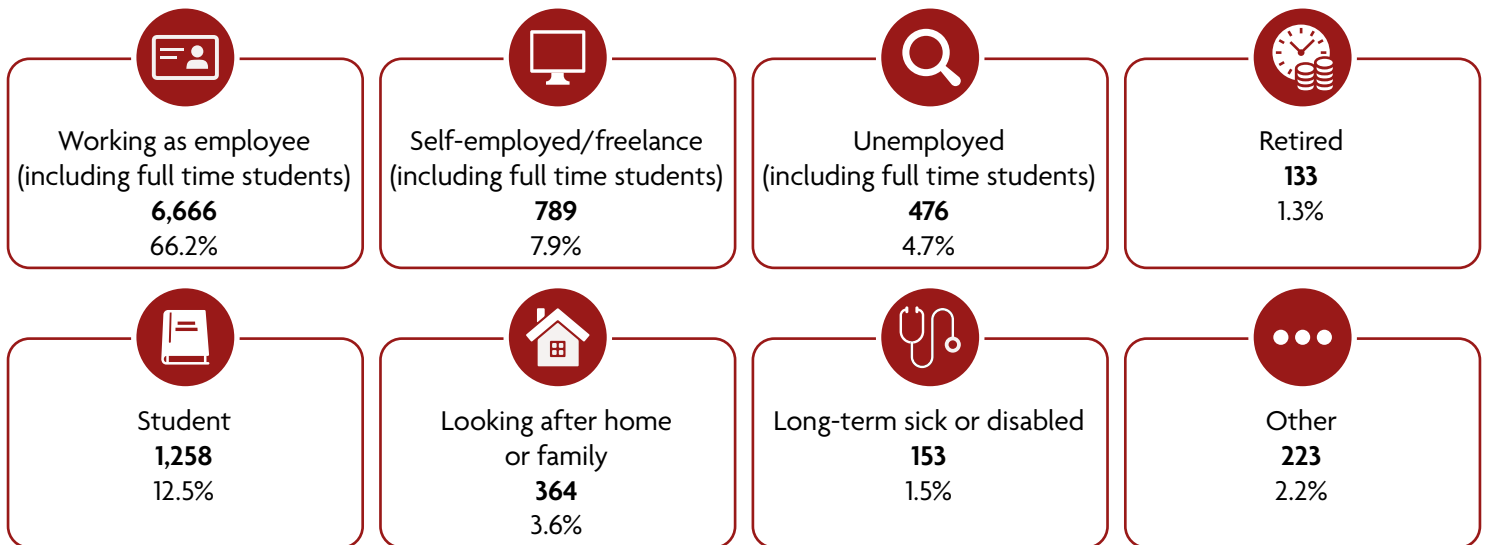
| | | | | |
|-----------|-------|------|------|----------|
| | | | | |
| Very good | Good | Fair | Bad | Very bad |
| 7,479 | 3,475 | 704 | 151 | 50 |
| 63.1% | 29.3% | 5.9% | 1.3% | 0.4% |

STRATFORD OLYMPIC PARK

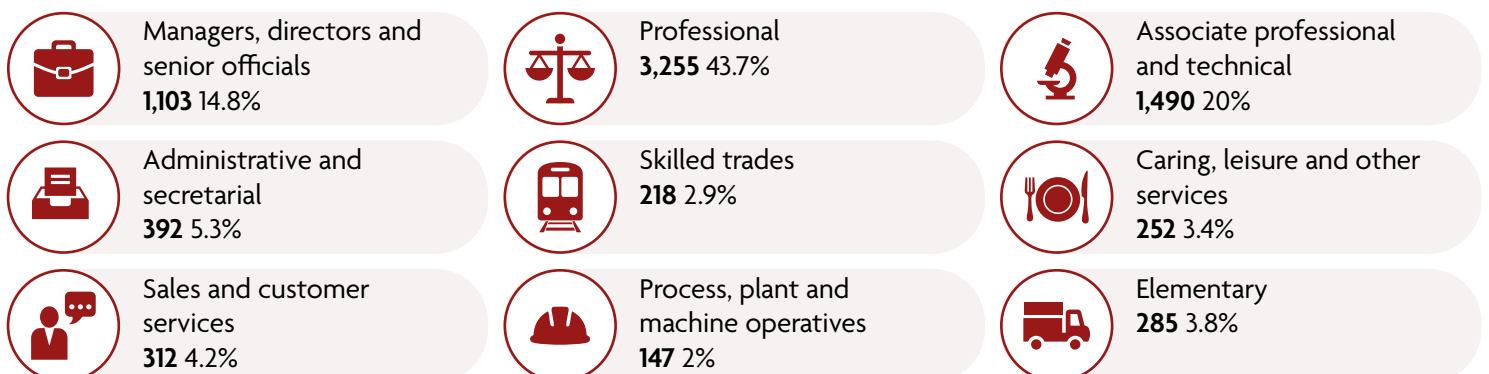
QUALIFICATION

| QUALIFICATION | NUMBER | % |
|---|--------|-------|
| No qualifications | 513 | 5.1% |
| Level 1 - 1 to 4 GCSEs grade A* to C , Any GCSEs at other grades, O levels or CSEs (any grades), 1 AS level, NVQ level 1, Foundation GNVQ, Basic or Essential Skills | 285 | 2.8% |
| Level 2 - 5 or more GCSEs (A* to C or 9 to 4), O levels (passes), CSEs (grade 1), School Certification, 1 A level, 2 to 3 AS levels, VCEs, Intermediate or Higher Diploma, Welsh Baccaureate, Intermediate Diploma, NVQ level 2, Intermediate GNVQ, City and Guilds Craft, BTEC First or General Diploma, RSA Diploma | 538 | 5.3% |
| Apprenticeship | 101 | 1% |
| Level 3 - 2 or more A levels or VCEs, 4 or more AS levels, Higher School Certificate, Progression or Advanced Diploma, Welsh Baccaureate Advance Diploma, NVQ level 3; Advanced GNVQ, City and Guilds Advanced Craft, ONC, OND, BTEC National, RSA Advanced Diploma | 1,377 | 13.7% |
| Level 4 - degree (BA, BSc), higher degree (MA, PhD, PGCE), NVQ level 4 to 5, HNC, HND, RSA Higher Diploma, BTEC Higher level, professional qualifications (for example, teaching) | 7,032 | 69.9% |
| Other: vocational or work-related qualifications, other qualifications achieved in England or Wales, qualifications achieved outside England or Wales (equivalent not stated or unknown) | 216 | 2.1% |

ECONOMIC ACTIVITY



OCCUPATION



WEST HAM

CENSUS DATA 2021

Every ten years since 1801, the UK has set aside one day for the census - a count of all the people and households. It is the most complete source of information about the population that we have. The latest census was held on Sunday 21 March 2021. A host of questions are asked in the census which includes age, ethnicity, religion, general health, level of qualification, and economic activity. Some results from the 2021 census are set out for wards in Stratford & West Ham.



POPULATION: 15,700 (4.5% of Newham's population)

AGE

| | | | | | | | | |
|-------------|--------------|------|-------|--------------|-------|--------------|------------|------|
| 4 and under | 929 | 5.9% | 20-24 | 1,279 | 8.1% | 65-74 | 828 | 5.3% |
| 5-9 | 835 | 5.3% | 25-34 | 3,356 | 21.4% | 75-84 | 386 | 2.5% |
| 10-15 | 1,075 | 6.8% | 35-49 | 3,573 | 22.8% | 85 and over | 112 | 0.7% |
| 16-19 | 742 | 4.7% | 50-64 | 2,588 | 16.5% | 100 and over | 1 | 0% |

ETHNICITY

The Census 2021 gave residents the choice to identify themselves through one of 19 available response options, which included categories with write-in response options. For Newham, there were over 200 additional ethnic identifications as a result.

| Asian, Asian British or Asian Welsh | 4,324 | 27.5% |
|-------------------------------------|--------------|--------------|
| Bangladeshi | 1,917 | 12.2% |
| Chinese | 323 | 2.1% |
| Indian | 709 | 4.5% |
| Pakistani | 641 | 4.1% |
| Other | 734 | 4.7% |

| Black, Black British, Black Welsh, Caribbean or African | 3,778 | 24.1% |
|---|--------------|--------------|
| African | 2,411 | 15.4% |
| Caribbean | 917 | 5.8% |
| Other | 450 | 2.9% |

| Mixed or Multiple ethnic groups | 1,028 | 6.5% |
|---------------------------------|--------------|-------------|
| White and Asian | 166 | 1.1% |
| White and Black African | 163 | 1% |
| White and Black Caribbean | 346 | 2.2% |
| Other | 353 | 2.2% |

| White | 5,724 | 36.4% |
|---|--------------|--------------|
| English, Welsh, Scottish, Northern Irish or British | 2,695 | 17.2% |
| Irish | 85 | 0.5% |
| Gypsy or Irish Traveller | 15 | 0.1% |
| Roma | 139 | 0.9% |
| Other | 2,790 | 17.8% |

| Other | 852 | 5.4% |
|-------|------------|-------------|
| Arab | 233 | 1.5% |
| Other | 619 | 3.9% |

RELIGION

| | | |
|--------------|--------------|-------|
| No religion | 2,572 | 16.4% |
| Christian | 7,281 | 46.4% |
| Buddhist | 162 | 1% |
| Hindu | 449 | 2.9% |
| Jewish | 25 | 0.2% |
| Muslim | 3,911 | 24.9% |
| Sikh | 79 | 0.5% |
| Other | 83 | 0.5% |
| Not answered | 1,138 | 7.2% |

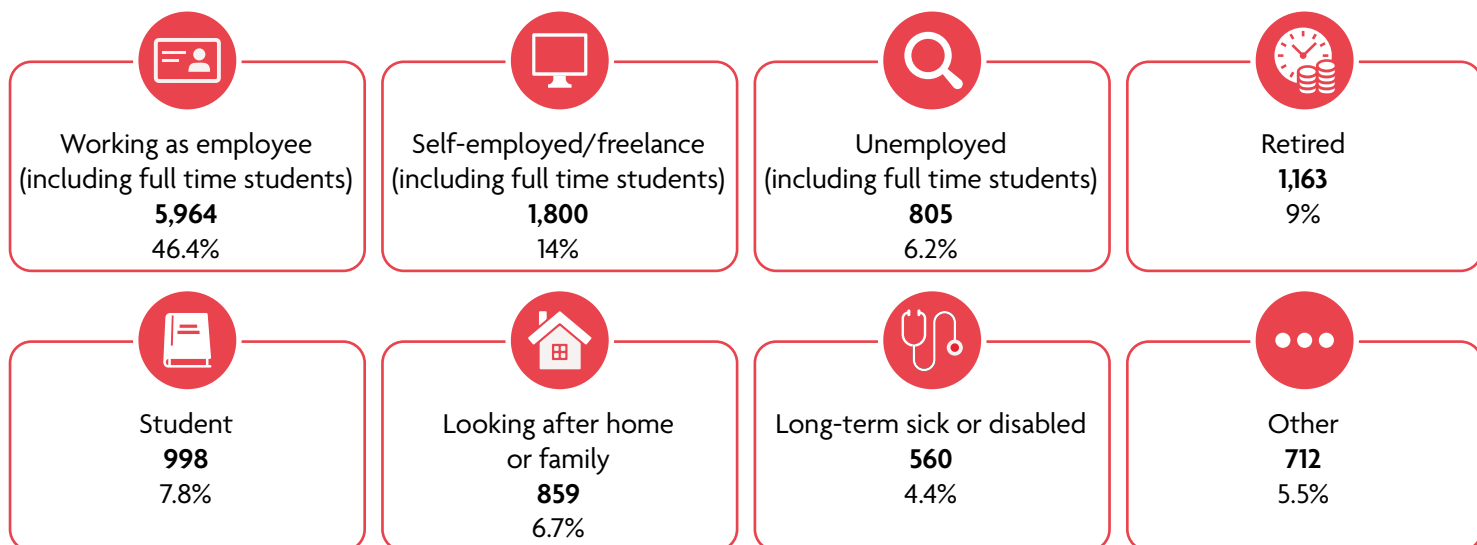
GENERAL HEALTH

| | | | |
|--|------------------|--------------|-------|
| | Very good | 7,748 | 49.4% |
| | Good | 5,431 | 34.6% |
| | Fair | 1,802 | 11.5% |
| | Bad | 536 | 3.4% |
| | Very bad | 183 | 1.2% |

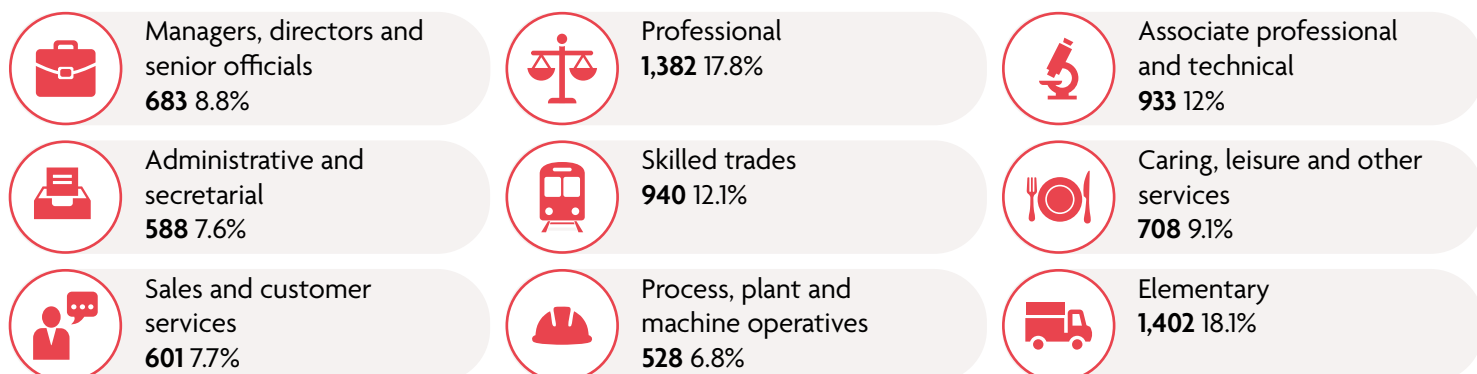
QUALIFICATION

| QUALIFICATION | NUMBER | % |
|--|--------------|-------|
| No qualifications | 2,700 | 21% |
| Level 1 - 1 to 4 GCSEs grade A* to C , Any GCSEs at other grades, O levels or CSEs (any grades), 1 AS level, NVQ level 1, Foundation GNVQ, Basic or Essential Skills | 1,218 | 9.5% |
| Level 2 - 5 or more GCSEs (A* to C or 9 to 4), O levels (passes), CSEs (grade 1), School Certification, 1 A level, 2 to 3 AS levels, VCEs, Intermediate or Higher Diploma, Welsh Baccaulaureate, Intermediate Diploma, NVQ level 2, Intermediate GNVQ, City and Guilds Craft, BTEC First or General Diploma, RSA Diploma | 1,356 | 10.5% |
| Apprenticeship | 468 | 3.6% |
| Level 3 - 2 or more A levels or VCEs, 4 or more AS levels, Higher School Certificate, Progression or Advanced Diploma, Welsh Baccaulaureate Advance Diploma, NVQ level 3; Advanced GNVQ, City and Guilds Advanced Craft, ONC, OND, BTEC National, RSA Advanced Diploma | 1,631 | 12.7% |
| Level 4 - degree (BA, BSc), higher degree (MA, PhD, PGCE), NVQ level 4 to 5, HNC, HND, RSA Higher Diploma, BTEC Higher level, professional qualifications (for example, teaching) | 4,962 | 38.6% |
| Other: vocational or work-related qualifications, other qualifications achieved in England or Wales, qualifications achieved outside England or Wales (equivalent not stated or unknown) | 527 | 4.1% |

ECONOMIC ACTIVITY



OCCUPATION



OUR PARTNERS

We work closely with partners including voluntary, community and faith sector (VCFS) to connect with the local community. Partners deliver vital services such as food banks, befriending services, and advice. We collaborate on joint initiatives, activities and events to enhance community cohesion and improve the lives of local residents. Some partners have been successful in applying for People Powered Places (formerly Community Assemblies) funding and are pivotal in delivering these projects.

Some key partners that we work with include:

Frames of Mind

Empowers communities through creative digital engagement.



Age UK

A leading charity providing advice and support for older adults. They hold regular drop in support sessions at Stratford Library.

Alzheimer's UK

Provides support, guidance and help for families living with dementia. It holds Music for the Mind sessions at Stratford Library.

Deafroots

Supports the deaf and hard of hearing community by offering free weekly sessions at Stratford Library.

Discover Children's Story Centre

Works closely in partnership with the Newham Library Service to help transform lives through stories, creativity and imagination.

Family Support

Empowers families to build a strong, stable and loving family network. They have an outreach table at Stratford Library.

Holden Point Community Scheme

This sheltered accommodation facility works closely with the Neighbourhood Team to run regular sessions at Holden Point.

Life in the UK

Works with new residents to integrate with the community, providing essential knowledge for the Life in UK Test.

London Legacy Corporation (LLDC)

Responsible for managing the Queen Elizabeth Olympic Park. It works in partnership to promote the Library Service at events in Olympic Park.

Metropolitan Police

Responsible for law enforcement and prevention of crime. It has regular information stalls at Stratford Library, offering advice and support.

Newham College

Works in partnership with the Neighbourhood Team to run regular advice and support workshops, and supports neighbourhood events.

Rebecca Cheetham Children's Centre

Delivers under 5 and parental advice sessions at Stratford Library.

Roma Support group

Provides support to Roma families and promotes an understanding of their culture in the UK via workshops and exhibitions.

Sadler's World

A theatre and performing arts venue offering discounted tickets to Newham residents and free performances in the library.

Stratford Shopping Centre

Local shopping centre which collaborates on events e.g. Christmas, Easter and seasonal celebrations.

NHS Talking Therapies

Helps with mental health problems like stress, anxiety and depression.

Theatre Royal

Provides a platform for Black, Asian and minority groups an opportunity to participate and enjoy theatre for all.

University College London

Works with neighbourhood teams to provide research programmes.

West Ham Foundation

Works in partnership with various organisations to meet the needs of the community.

NEIGHBOURHOOD INITIATIVES



Abbey Gardens

Bakers Row, E15 3NF
Community-led garden
Open: 7am-8.30pm

Abbey Gardens is a community garden in East London built on the site of a Scheduled Ancient Monument. The garden area was a row of cottages, and beneath is the remain of the gatehouse of the Stratford Langthorne Abbey. It is managed by a charity, The Friends of Abbey Gardens.

Stratford Original, Business Improvement District (BID)

The BID is one of the 180 BIDs in the UK in which businesses are required to pay an additional tax (or levy) in order to fund projects within the district's boundaries. The Stratford BID started in 2015 and was re-elected to continue for a second term and will run until 2025.

Newham Poetry House@ Stratford Park

A weekly creative space with poetry workshops, poetry readings, performances, open mic, spoken word, book swap word and much more



Love E15

Love E15 is a community-building collective in West Ham that runs neighbourhood activities to encourage local residents' sense of ownership and pride in their E15 area. One local issue the group tackles is fly-tipping – Love E15 uses art and creativity to “beautify” local fly-tipping “hot-spots” in the hope this will prevent rubbish dumping.

Mary Ward Centre – London's Specialist Institutes for Adult Learning

The organisation works closely with neighbourhood team to deliver creative workshops for local residents.



NEWHAM RESIDENTS SURVEY 2023

We will run a new survey that will provide measurement for our eight priorities as part of our Building a Fairer Newham Corporate Plan. The plan will inform how we deliver our key priorities for the next four years.

The Newham Residents Survey 2023 will provide robust measurement of the outcomes relevant to a survey methodology. It will help us to demonstrate and measure the impact of our Corporate Plan. Alongside this, the results from the survey will allow us to understand residents' attitudes and needs, and their satisfaction with the Council and services we deliver. The survey will question a representative sample of residents at a Newham level. We expect at least 1,500 Newham residents to be surveyed across our eight Community Neighbourhood Areas with one of the areas split into two, making a total of nine geographic areas to consider for sampling. The survey will run from May to August and the results will be published later in the year.

PEOPLE POWERED PLACES

COMMUNITY ASSEMBLIES ARE NOW



People

Powered

Places

People Powered Places is London Borough of Newham's flagship programme of participatory budgeting.

Previously named Community Assemblies, the programme has become one of the largest participatory budgeting initiatives in the UK since its launch in 2018. It has delivered lasting transformation funding more than 200 projects that have had real impact on the borough, including by improving engagement between the Council and residents

People Powered Places 2023-25, will be a two-year cycle with another £1.6 million of Neighbourhood Community Infrastructure Levy (CIL) funding allocated across Newham. Each neighbourhood will be allocated £200,000 for the two years.

People Powered Places is part of the Council's commitment to build a "People powered Newham and widening participation" and is fundamental to delivery of the London Borough of Newham's four-year Corporate plan 'Building a Fairer Newham'.



KEY DATES TO LOOK OUT FOR

| | |
|------------------------------------|--|
| May 2023 | Residents decide on local priorities. |
| June - July 2023 | Residents discuss solutions to improve their area. |
| June - August 2023 | Residents and local organisations come up with a project proposal to receive funding. Residents can apply for up to £5,000 and local organisations (VCFS) can apply for up to £20,000. |
| October - November 2023 | Residents vote for their favourite projects. |
| January 2024 - January 2025 | Successful projects are delivered by residents and local organisations with support from Newham Council. |
| May - June 2025 | We celebrate our achievements. |

Anyone who lives, works or learns in Newham can take part.

PROJECTS FOR 2022-23

Between 2022 and 2023, each Community Neighbourhood was allocated £100,000 funding for that year to spend on improving the area. Residents had a chance to co-produce local priorities, apply for funding and vote for their favourite projects on Newham Co-create.

In Stratford & West Ham, six projects were voted for between 2022 and 2023.

PEOPLE POWERED PLACES



Stratford Skate Hub – Olympic Park

Skate Gals & Pals and Skate Cabal are in the process of creating a semi-permanent skating facility in Olympic Park to deliver skate sessions for adults and children.



Collaborative Community Mural

The project conducted nine creative workshops to create a community mural on Tram Way in Stratford to celebrate the diversity of the area and provide 50 volunteer opportunities for Newham residents.



Community Wardrobe

The project will offer three events a year in Stratford selling good quality pre-loved clothes at affordable prices plus community wardrobe open almost every week of the year at the Community Corner social supermarket/pantry. The funding will also help towards buying a new van.



Welcome to the Channelsea: Caring for our Blue Green Future

They are working towards improving the Channelsea River area by providing orchard and composting workshops, designing and installing a welcome archway, and installing a Green propulsion system for the group's safety boat.



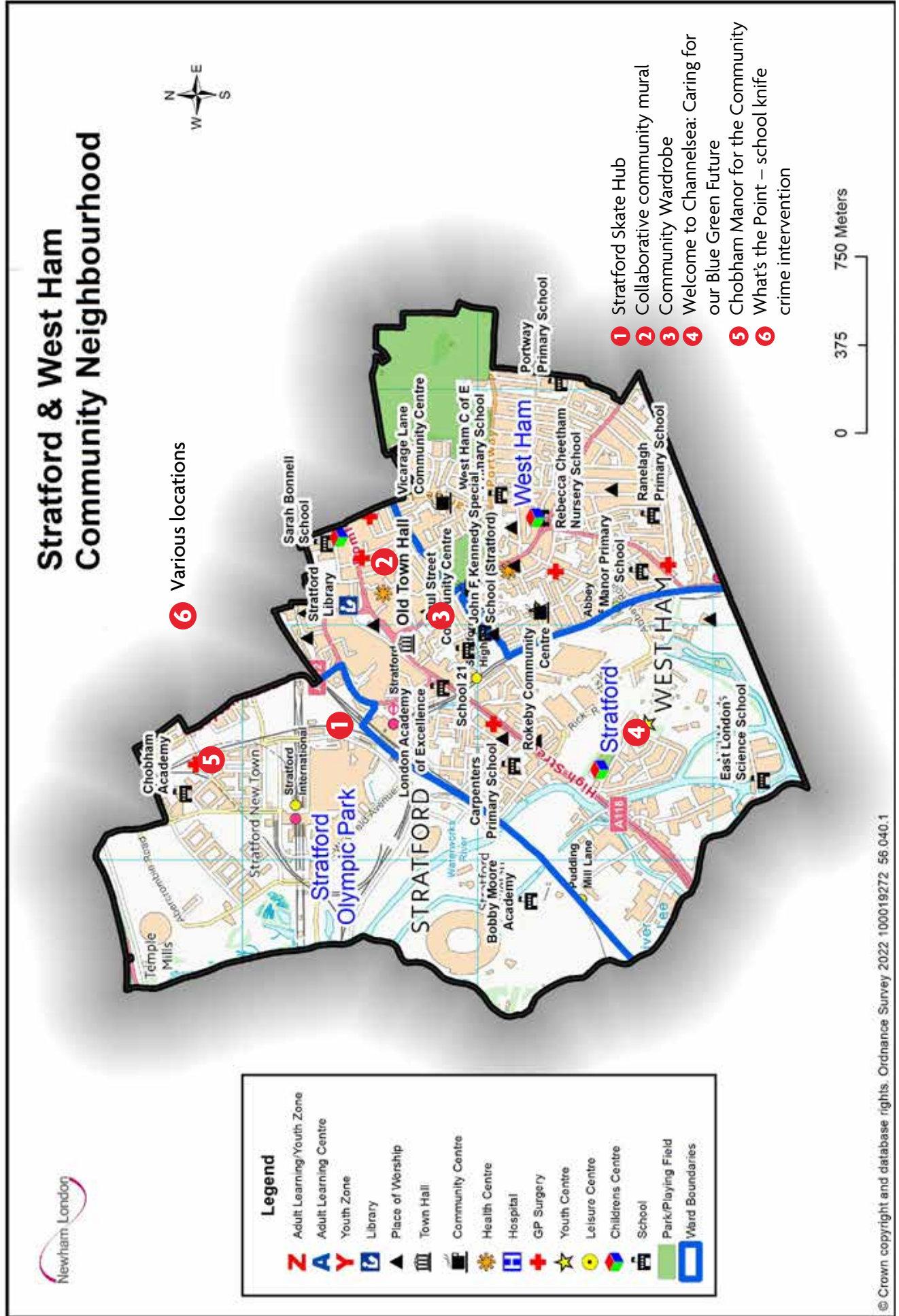
Chobham Manor for the Community

Making improvements to the community facility at Chobham Manor and delivering health and wellbeing activities for people with special needs.

What's The Point School Knife Crime Intervention Project –

What's the point (WTP) is a Home Office-sponsored 10-week, self-selecting peer-led programme in local primary and secondary schools to empower children and young people to be influencers of change in their culture around carrying knives.

MAP OF COMMUNITY ASSEMBLY PROJECTS



LOCAL COUNCILLORS

Councillors are elected by the community to decide how the council should carry out its various activities. They represent public interest as well as individuals living within the ward in which they have been elected to serve a term of office. They have regular contact with the general public through council meetings, telephone calls or surgeries. Surgeries take place regularly and provide an opportunity for any ward resident to talk to their councillor face to face.

STRATFORD

Councillor Joshua Garfield

LABOUR and
CO-OPERATIVE

Cabinet Member
for Education



✉ Joshua.Garfield@newham.gov.uk

Councillor Sabia Kamali

LABOUR and
CO-OPERATIVE

Deputy Cabinet
Member
for Housing
Management and
Modernisation



✉ Sabia.Kamali@newham.gov.uk

Councillor Terence Paul

LABOUR and
CO-OPERATIVE



✉ Terence.Paul@newham.gov.uk

STRATFORD OLYMPIC PARK

Councillor Nate Higgins

GREEN



✉ Nate.Higgins@newham.gov.uk

Councillor Danny Keeling

GREEN

Leader of
The Green Party



✉ Danny.Keeling@newham.gov.uk

WEST HAM

Councillor John Gray

LABOUR and
CO-OPERATIVE

Chair of Pensions
Committee



✉ John.Gray@newham.gov.uk

Councillor Charlene McLean

LABOUR and
CO-OPERATIVE

Cabinet member
for Resident
Engagement and
Resident Experience



✉ Charlene.McLean@newham.gov.uk

Councillor Dr John Whitworth

LABOUR and
CO-OPERATIVE

Deputy Cabinet
Member for
Planning and
Development, Air Quality and
Climate Emergency



✉ John.Whitworth@newham.gov.uk

Correspondence address for Councillors:

LBN, Newham Dockside, Ground Floor East, 1000 Dockside Road, London, E16 2QU.*

*Please address your correspondence to the Councillor that you are writing to

CONTACT US:

Jyoti Singh


Community Neighbourhood Area Manager

Sandra Conolan

Community Neighbourhood Area Co-ordinator

Ciji Varughese

Community Neighbourhood Senior Officer

 020 3373 0826

 CN.Stratfordwestham@newham.gov.uk