

# APPENDIX I

Figure 1.1	Newham green and water spaces – total provision (by Ward)	36
Figure 1.2	Newham green and water spaces – total provision (by Neighbourhood)	37
Figure 3.1	Publicly accessible parks and gardens	38
Figure 3.1.1	Publicly accessible regional parks	39
Figure 3.1.2	Publicly accessible metropolitan parks	40
Figure 3.1.3	Publicly accessible district parks	41
Figure 3.1.4	Publicly accessible local parks	42
Figure 3.1.5	Publicly accessible small parks	43
Figure 3.1.6	Publicly accessible pocket parks	44
Figure 3.2	Publicly accessible natural and semi-natural greenspaces	45
Figure 3.3	Existing SINCs	46
Figure 3.4	Proposed SINCs	47
Figure 3.5	Publicly accessible amenity greenspaces	48
Figure 3.6	Publicly accessible sports grounds	49
Figure 3.7	All playgrounds	50
Figure 3.7.1	LAP playgrounds	51-52
Figure 3.7.2	LEAP playgrounds	53
Figure 3.7.3	NEAP playgrounds	54
Figure 3.8	Allotment provision	55
Figure 4.1	Publicly accessible greenspaces	56
Figure 4.2	Accessibility of parks and gardens	57
Figure 4.2.1	Accessibility of regional parks	58
Figure 4.2.2	Accessibility of metropolitan parks	59
Figure 4.2.3	Accessibility of district parks	60
Figure 4.2.4	Accessibility of local parks	61
Figure 4.2.5	Accessibility of small parks	62
Figure 4.2.6	Accessibility of pocket parks	63
Figure 4.3	Accessibility of natural and semi-natural greenspaces	64
Figure 4.4	Accessibility of all play	65
Figure 4.4.1	Accessibility of LAP playgrounds	66
Figure 4.4.2	Accessibility of LEAP playgrounds	67
Figure 4.4.3	Accessibility of NEAP playgrounds	68
Figure 4.5	Accessibility of allotments	69

FIGURE 1.1 NEWHAM PUBLICLY ACCESSIBLE GREEN AND WATER SPACES - TOTAL PROVISION (BY WARD)

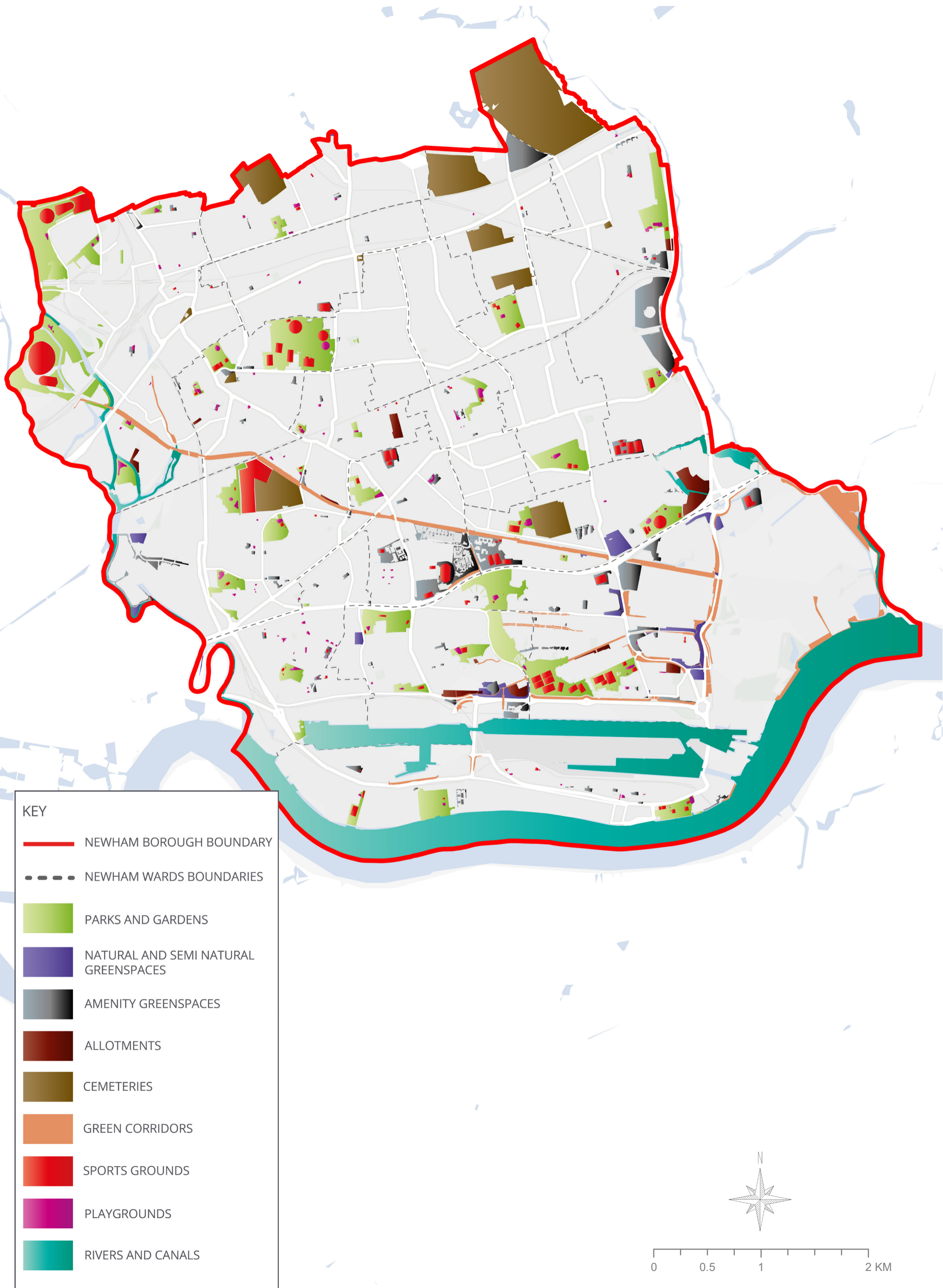
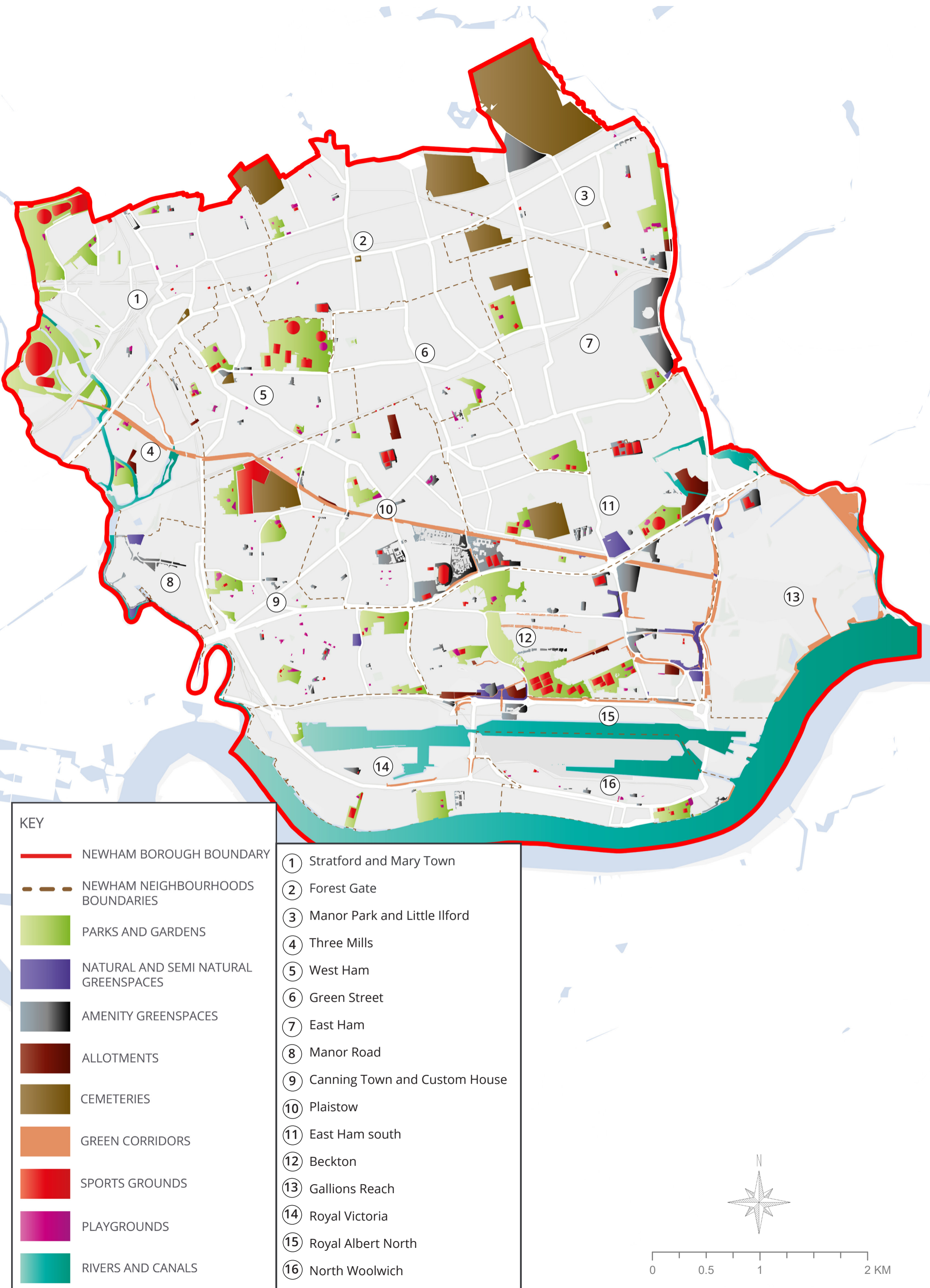




FIGURE 1.2 NEWHAM PUBLICLY ACCESSIBLE GREEN AND WATER SPACES - TOTAL PROVISION (BY NEIGHBOURHOOD)



KEY	
	NEWHAM BOROUGH BOUNDARY
	NEWHAM NEIGHBOURHOODS BOUNDARIES
	PARKS AND GARDENS
	NATURAL AND SEMI NATURAL GREENSPACES
	AMENITY GREENSPACES
	ALLOTMENTS
	CEMETERIES
	GREEN CORRIDORS
	SPORTS GROUNDS
	PLAYGROUNDS
	RIVERS AND CANALS
	1 Stratford and Mary Town
	2 Forest Gate
	3 Manor Park and Little Ilford
	4 Three Mills
	5 West Ham
	6 Green Street
	7 East Ham
	8 Manor Road
	9 Canning Town and Custom House
	10 Plaistow
	11 East Ham south
	12 Beckton
	13 Gallions Reach
	14 Royal Victoria
	15 Royal Albert North
	16 North Woolwich

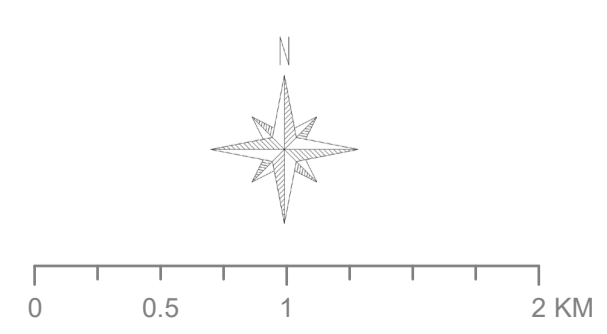
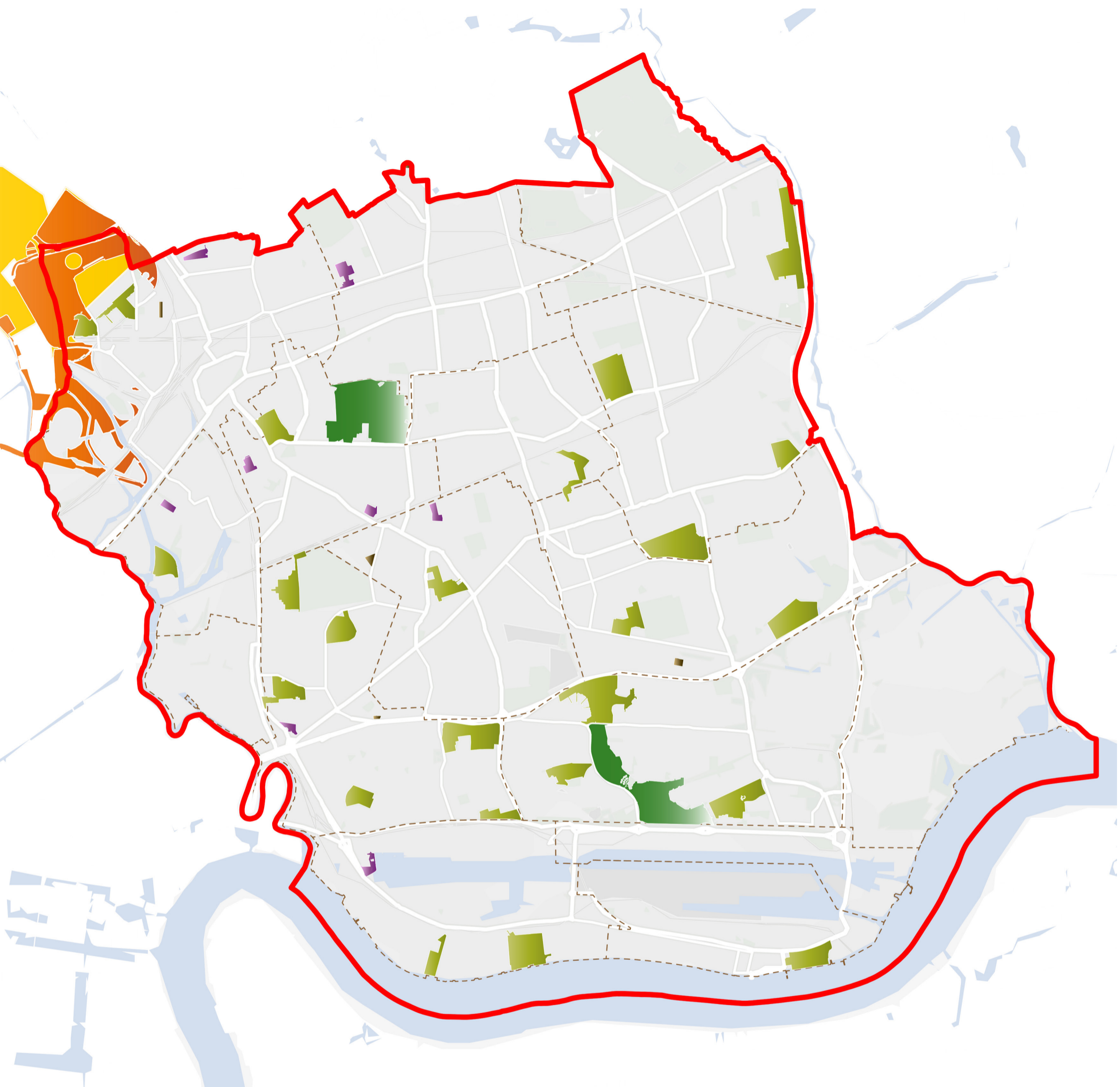


FIGURE 3.1 PUBLICLY ACCESSIBLE PARKS AND GARDENS



**KEY**

- NEWHAM BOROUGH BOUNDARY
- NEWHAM NEIGHBOURHOODS BOUNDARIES
- REGIONAL PARKS
- METROPOLITAN PARKS
- DISTRICT PARKS
- LOCAL PARKS
- SMALL PARKS
- POCKET PARKS

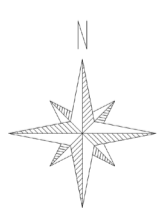
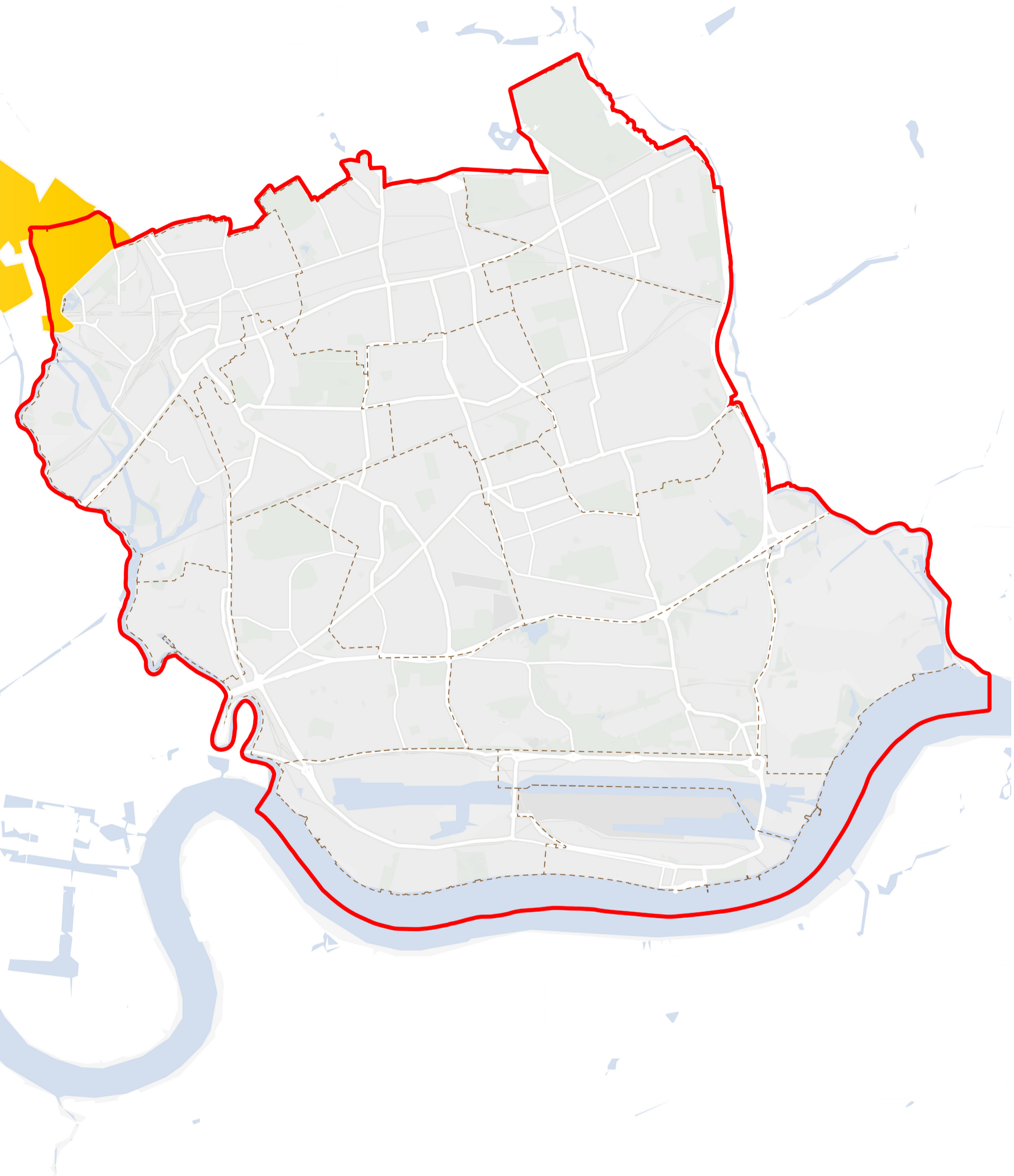




FIGURE 3.1.1 PUBLICLY ACCESSIBLE REGIONAL PARKS

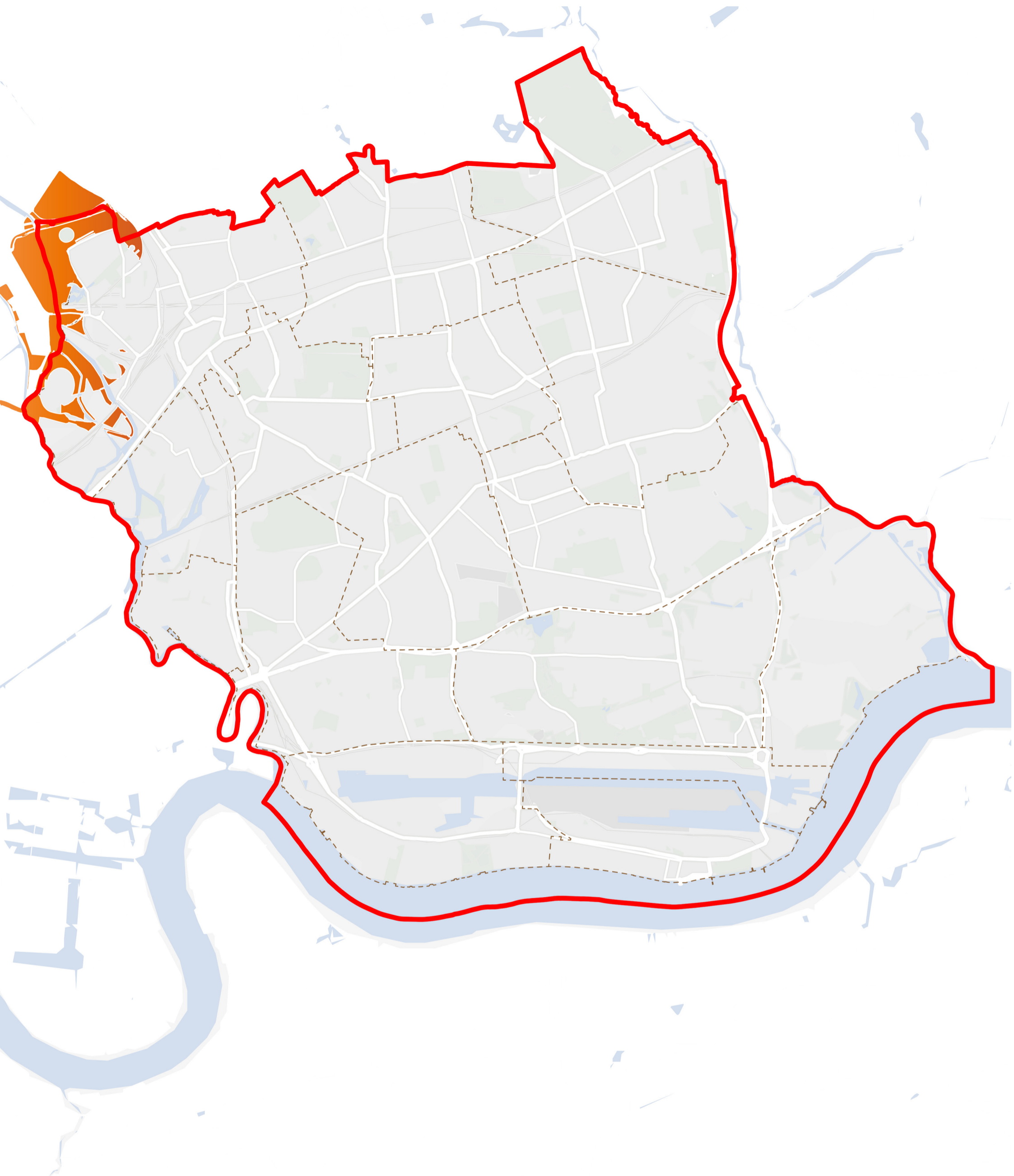


**KEY**

- NEWHAM BOROUGH BOUNDARY
- NEWHAM NEIGHBOURHOODS BOUNDARIES
- REGIONAL PARKS



FIGURE 3.1.2 PUBLICLY ACCESSIBLE METROPOLITAN PARKS



**KEY**




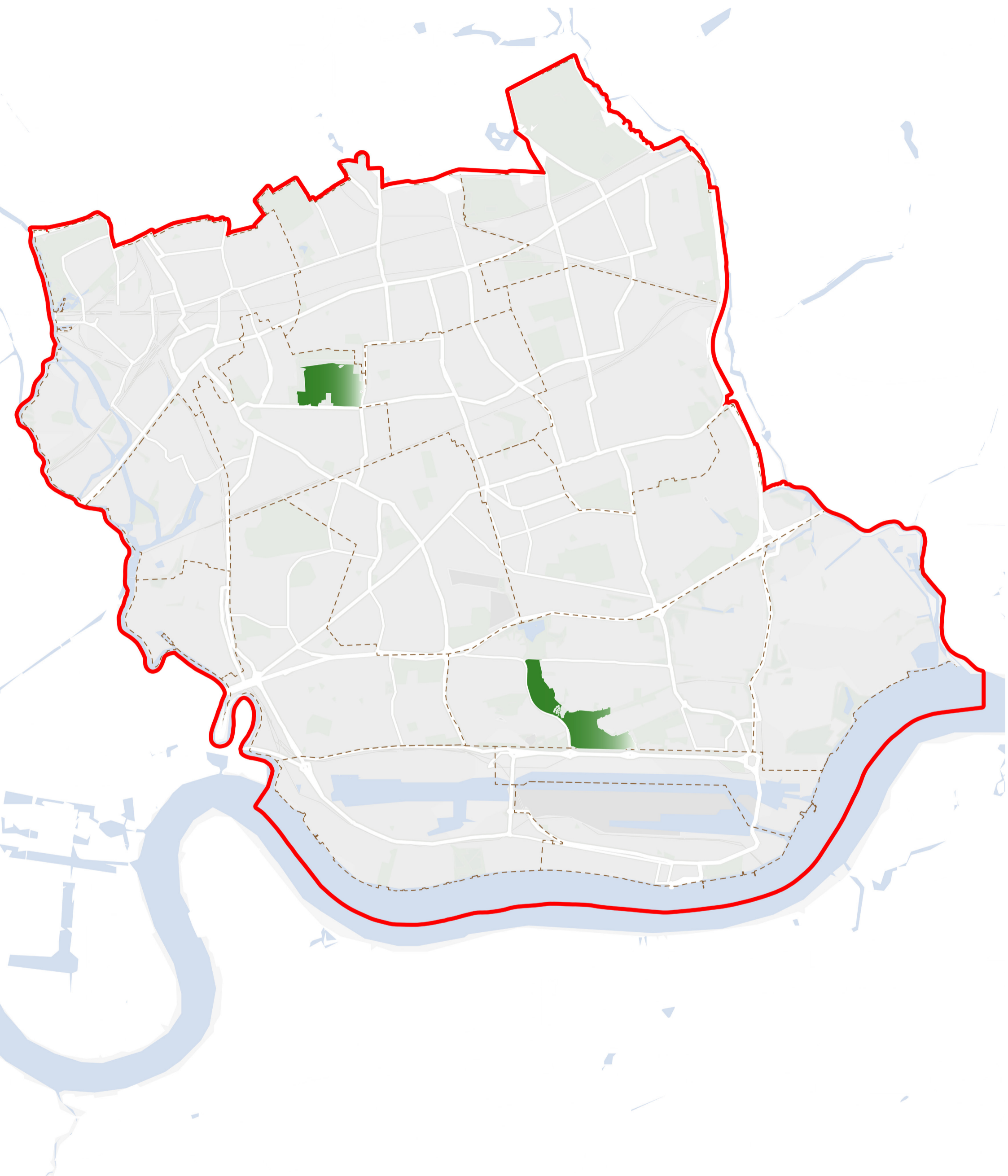
-  NEWHAM BOROUGH BOUNDARY
-  NEWHAM NEIGHBOURHOODS BOUNDARIES
-  METROPOLITAN PARKS





FIGURE 3.1.3 PUBLICLY ACCESSIBLE DISTRICT PARKS



**KEY**





-  NEWHAM BOROUGH BOUNDARY
-  NEWHAM NEIGHBOURHOODS BOUNDARIES
-  DISTRICT PARKS



FIGURE 3.1.4 PUBLICLY ACCESSIBLE LOCAL PARKS



**KEY**

-  NEWHAM BOROUGH BOUNDARY
-  NEWHAM NEIGHBOURHOODS BOUNDARIES
-  LOCAL PARKS

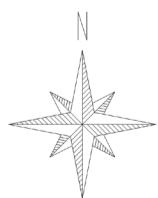




FIGURE 3.1.5 PUBLICLY ACCESSIBLE SMALL PARKS

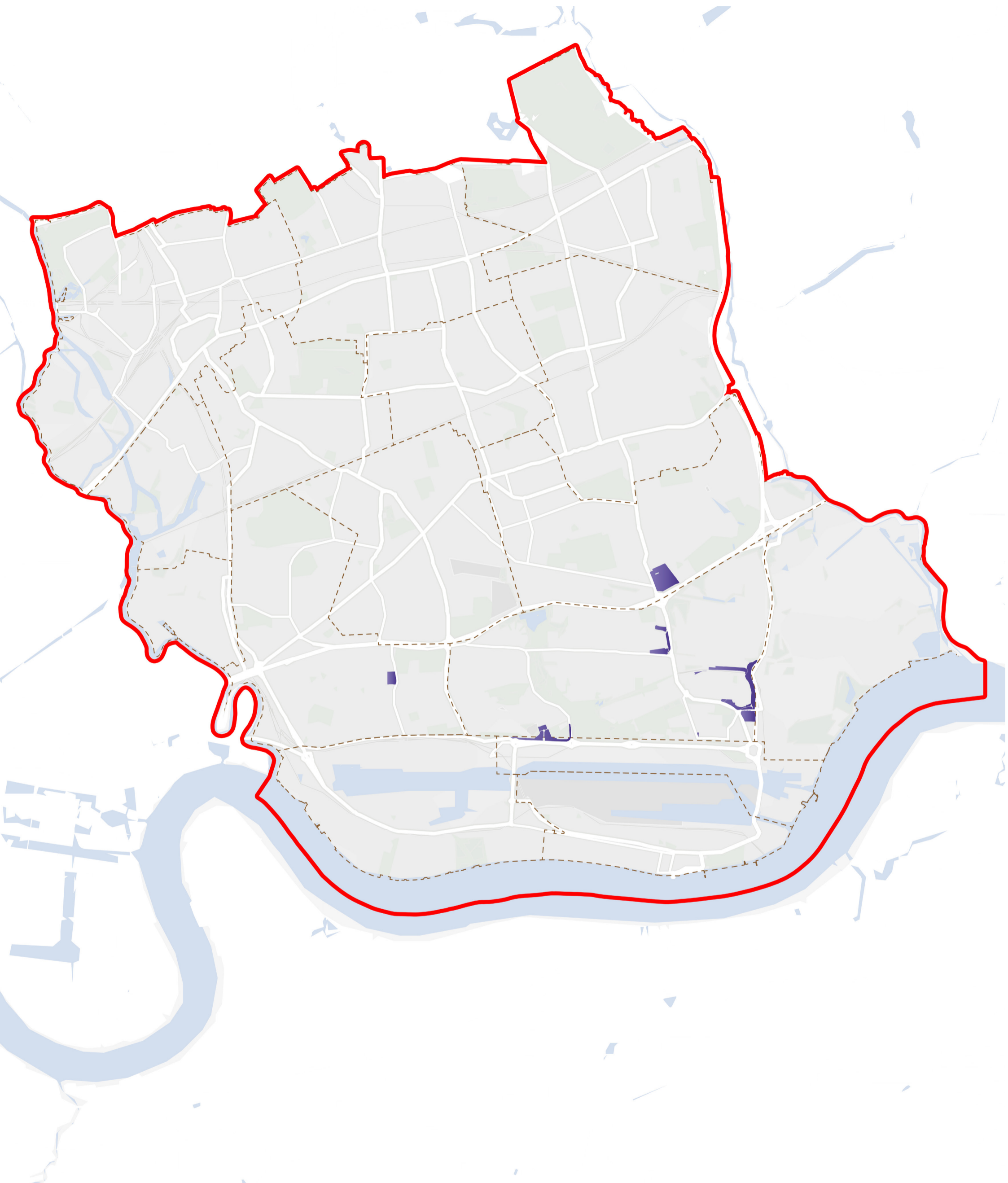


FIGURE 3.1.6 PUBLICLY ACCESSIBLE POCKET PARKS





FIGURE 3.2 PUBLICLY ACCESSIBLE NATURAL AND SEMI-NATURAL GREENSPACES



**KEY**

-  NEWHAM BOROUGH BOUNDARY
-  NEWHAM NEIGHBOURHOODS BOUNDARIES
-  NATURAL AND SEMI-NATURAL GREENSPACES

