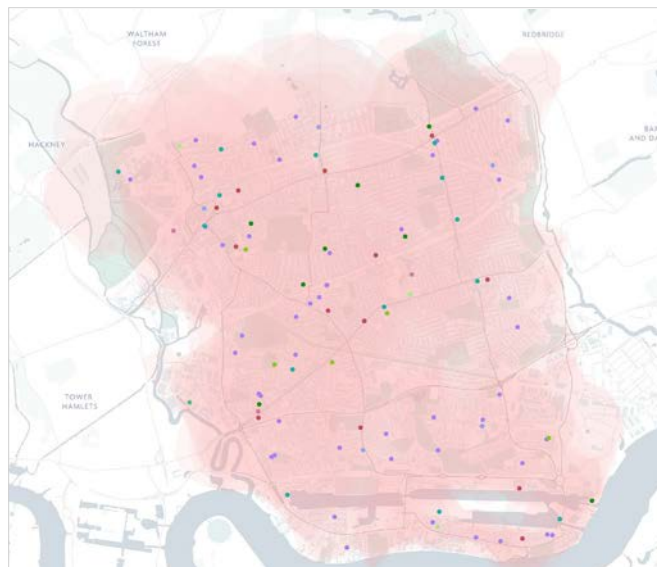


## 4.0 BASELINE MAPPING

### 4.10. CHARACTERISATION STUDY AND THE 15-MINUTE ISOCHRONES\*

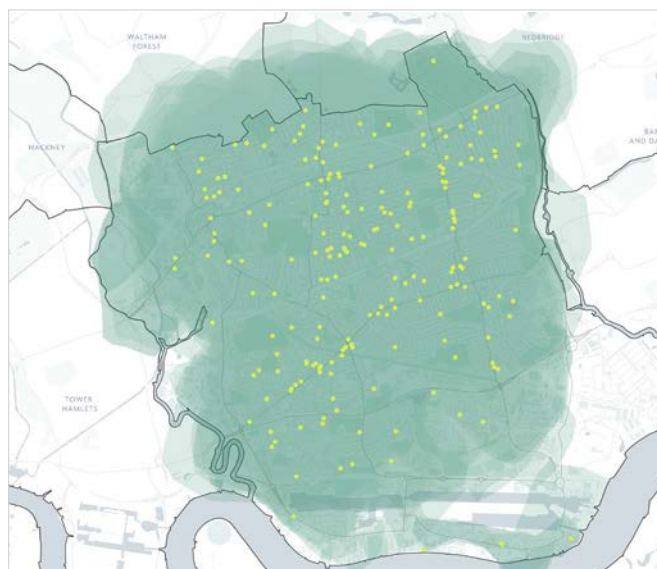
- Gallions Reach and areas of Stratford and Maryland and Three Mills are not within a 15-minute proximity of any facilities (community facilities, cultural or places of worship). These areas are predominantly open spaces or industrial areas.
- Areas within Plaistow, Beckton and West Ham are within 15-minutes of only 1 or 2 cultural facilities or none at all. Comparatively to the distribution mapping, the most well-connected areas to cultural facilities are Stratford and Maryland, a metropolitan town centre.
- As places of worship are the most predominant facility, the majority of the borough is within a 15-minute isochrone of a facility. However, as these facilities are used by different faith groups, this doesn't mean that residents necessarily are within 15 minutes of their chosen place of worship.



Map to show the 15-minute isochrones for community facilities



Map to show the 15-minute isochrones for cultural venues



Map to show the 15-minute isochrones for places of worship

#### COMMUNITY FACILITIES

- Charity/ community organisation
- Community centre
- Community hub
- Library
- Public hall/ exhibition hall
- Social club
- Youth and community centre
- Youth centre
- Youth zone

#### CULTURAL VENUES

- Arts centre
- Cinema
- Dance Hall
- Gallery
- Museum
- Music Venue
- Public Hall/ exhibition
- Theatre

#### PLACES OF WORSHIP

- Places of worship

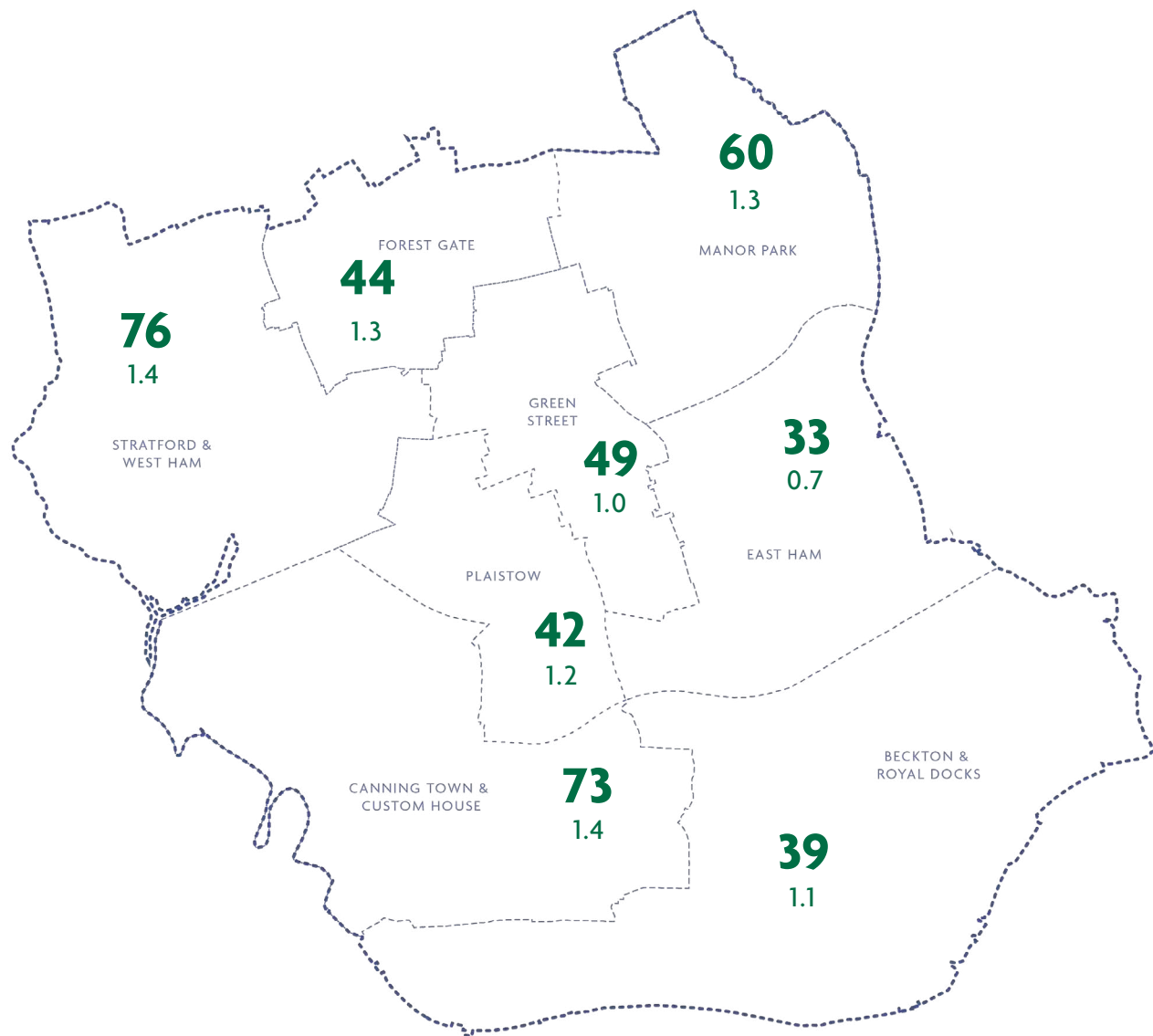
\*The content of the maps on this page were provided by the LBN consultant undertaking the Characterisation Study.

Additional detailed analysis is included in the report for different types of facilities in Appendix C.

## 4.0 BASELINE MAPPING

### 4.11. DENSITY

- Across the whole borough, the number of community facilities per population is 1.2 facilities per 1,000 people\*.
- Community facilities are classed as; Education with shared space, community centres, youth centres and zones, social clubs, libraries, public halls and exhibition halls, public houses, public toilets, places of worship, music venues, cinemas, theatres, galleries, museums. (Use class F and Sui generis - 2020). Please see Table A on page 5.
- Only Green Street and East Ham fall below this average level of provision.
- East Ham, Beckton Royal Docks and Plaistow have the fewest total number of community facilities.
- Stratford and West Ham and Canning Town and Custom House have the most community facilities per population.
- The number of community facilities by type per population is outlined in the charts in Appendix B.



#### KEY

- # Number of facilities in the neighbourhood
- # Number of facilities per 1,000 people

\*GLA Population projections from 2020 using the Identified Capacity Scenario. Source: (London Data-store: <https://data.london.gov.uk/dataset/housing-led-population-projections>)

## 4.0 BASELINE MAPPING

### 4.12. YOUTH POPULATION

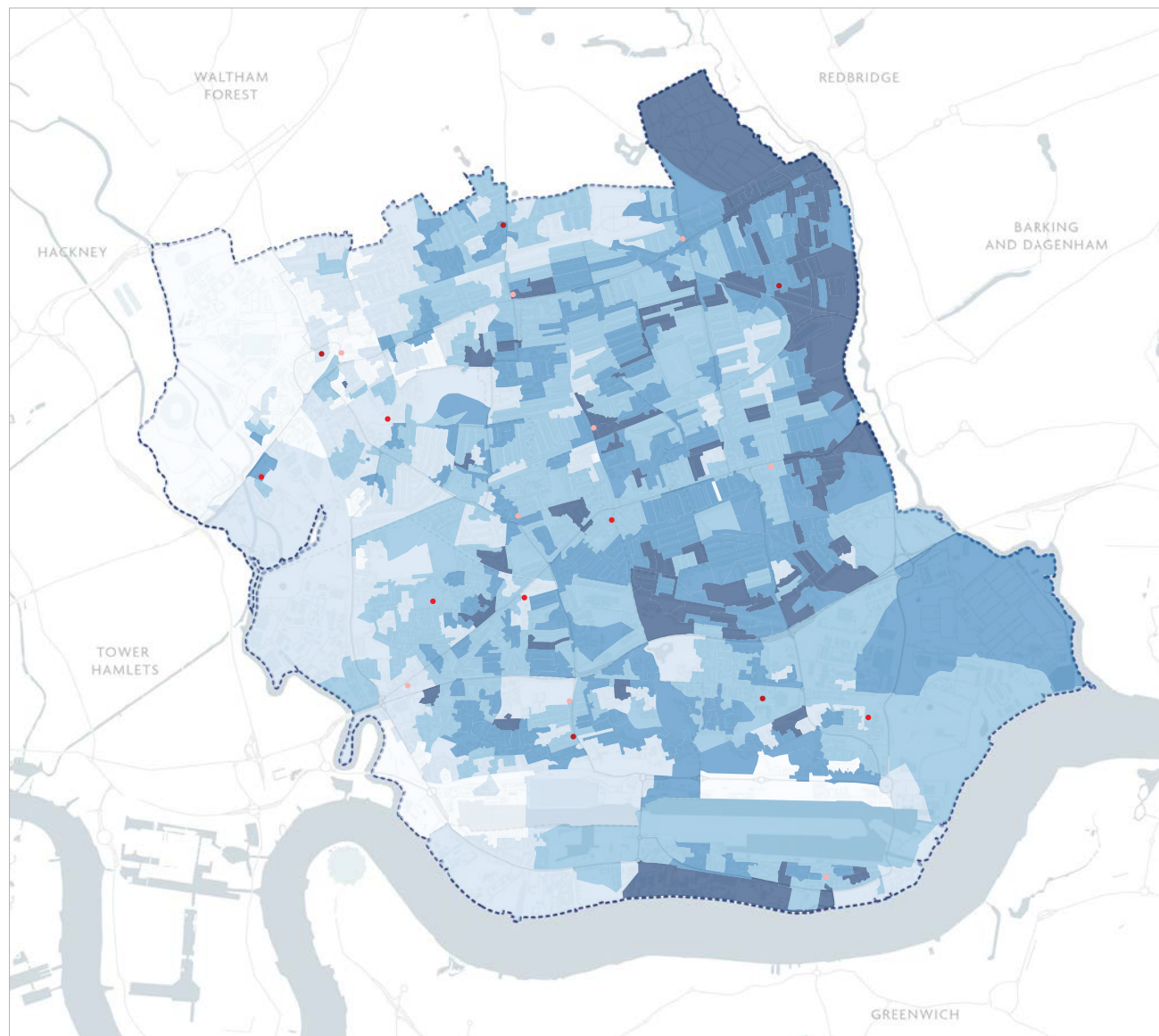
- 24% of Newham's population is aged between 0-16 and 5 Youth zones are located across the borough.
- Youth services are located in Stratford and Beckton and Royal Docks, next to good transport links.
- The highest proportion of the young population reside in the east of the borough, namely in East Ham and Manor Park.
- 8.5% of Manor Park's population is aged 0-4 which is both the highest percentage and absolute number in the borough.
- 47% of the borough's young people (aged 0-18) live in Manor Park, East Ham and Green Street.
- Across all key stages (1 to 5 for children aged 5 to 18) East Ham has both the highest absolute number and percentage of their population in those age groups.
- Youth services across the borough do not match this distribution and additional youth centres and youth zones could be located in East Ham.

#### YOUTH AMENITIES

- Youth Centres
- Youth Zones
- Libraries

#### PERCENTAGE OF POPULATION AGED 0-16

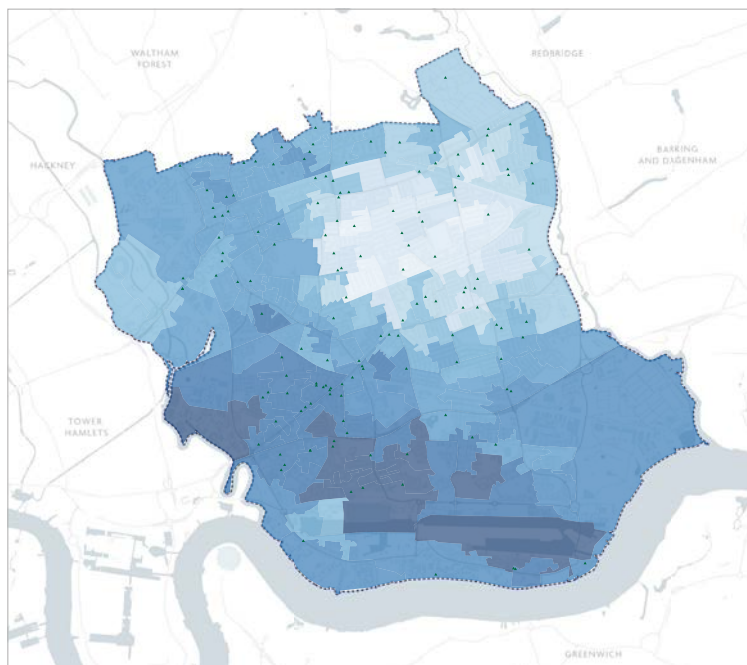
- 0 -15%
- 15-22%
- 21-27%
- 27-32%
- 32-52%



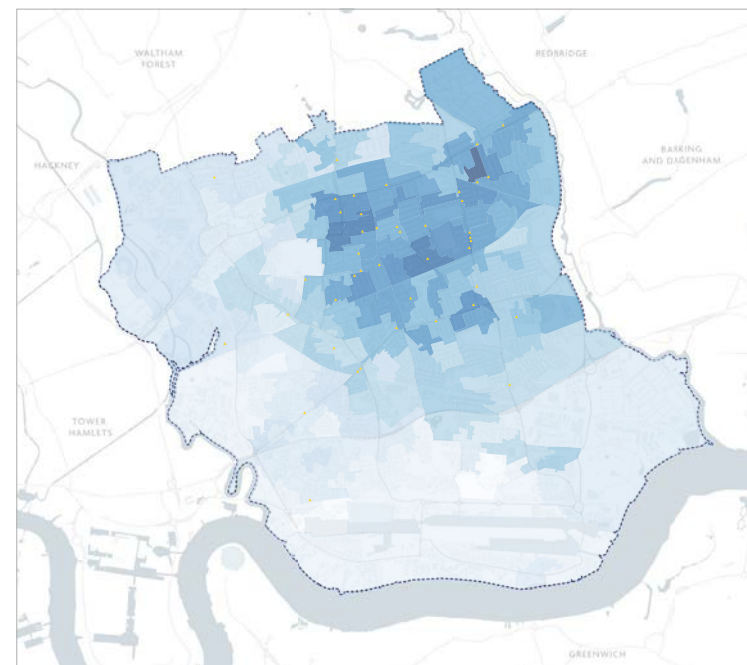
## 4.0 BASELINE MAPPING

### 4.13. RELIGION

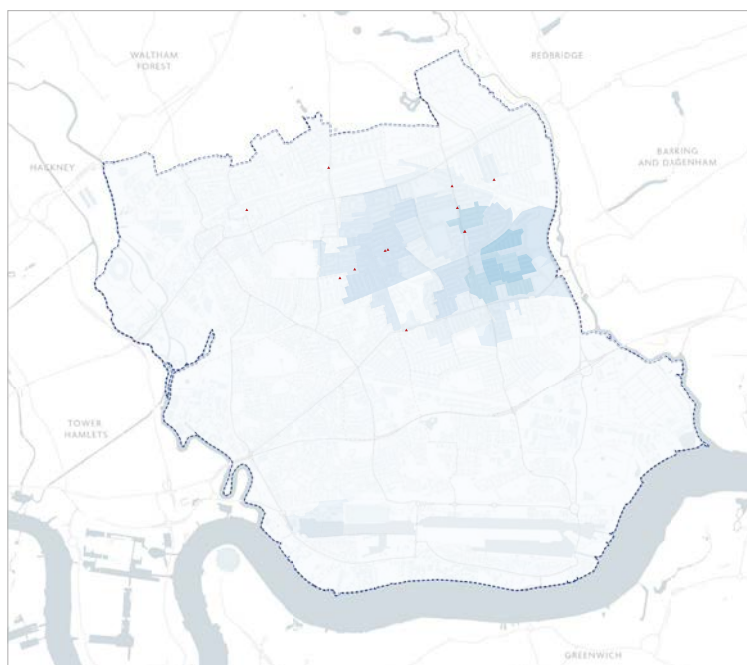
- Newham has the lowest percentage of residents in any London Borough describing themselves as having no religion.
- 81% of residents describe themselves as having a religion which is reflected by the 206 recorded places of worship.
- In 2018 Newham's Muslim population made up 42.1% of its population but there are 3 Churches for every Mosque or Masjid across the borough.
- There are neighbourhoods in East Ham where there are no places of worship for Muslims despite representing between 25 and 35% of the population in those areas.
- There are very few places of worship in the south of the borough.



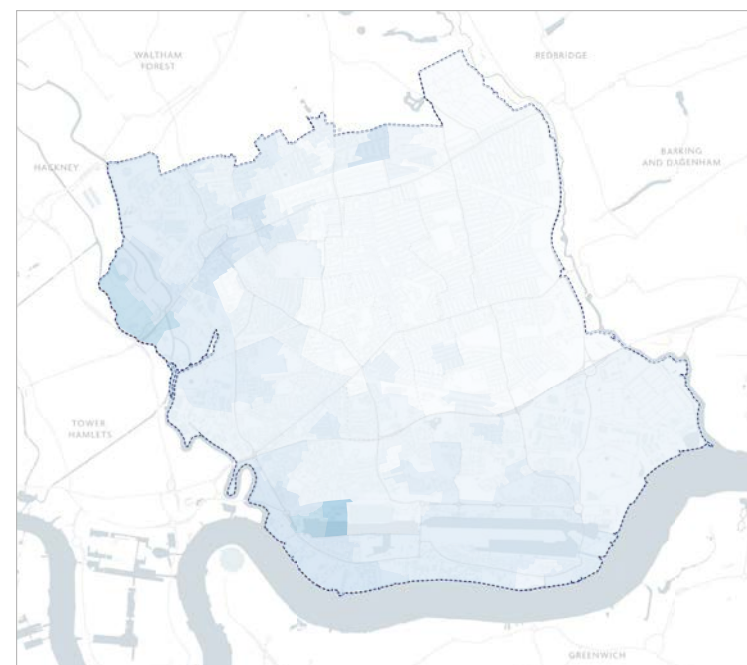
Christian population



Muslim population



Hindu population



No religion

#### PLACES OF WORSHIP

- ▲ Christianity
- ▲ Hinduism
- ▲ Islam

#### PERCENT OF RESIDENTS BY FAITH GROUP

- 0 - 10%
- 10 - 15%
- 15 - 20%
- 20 - 25%
- 25 - 30%
- 30 - 35%
- 35 - 40%
- 40 - 45%
- 45 - 50%
- 50 - 55%
- 55 - 60%
- >60%

## 4.0 BASELINE MAPPING

### 4.14. INDICES OF MULTIPLE DEPRIVATION

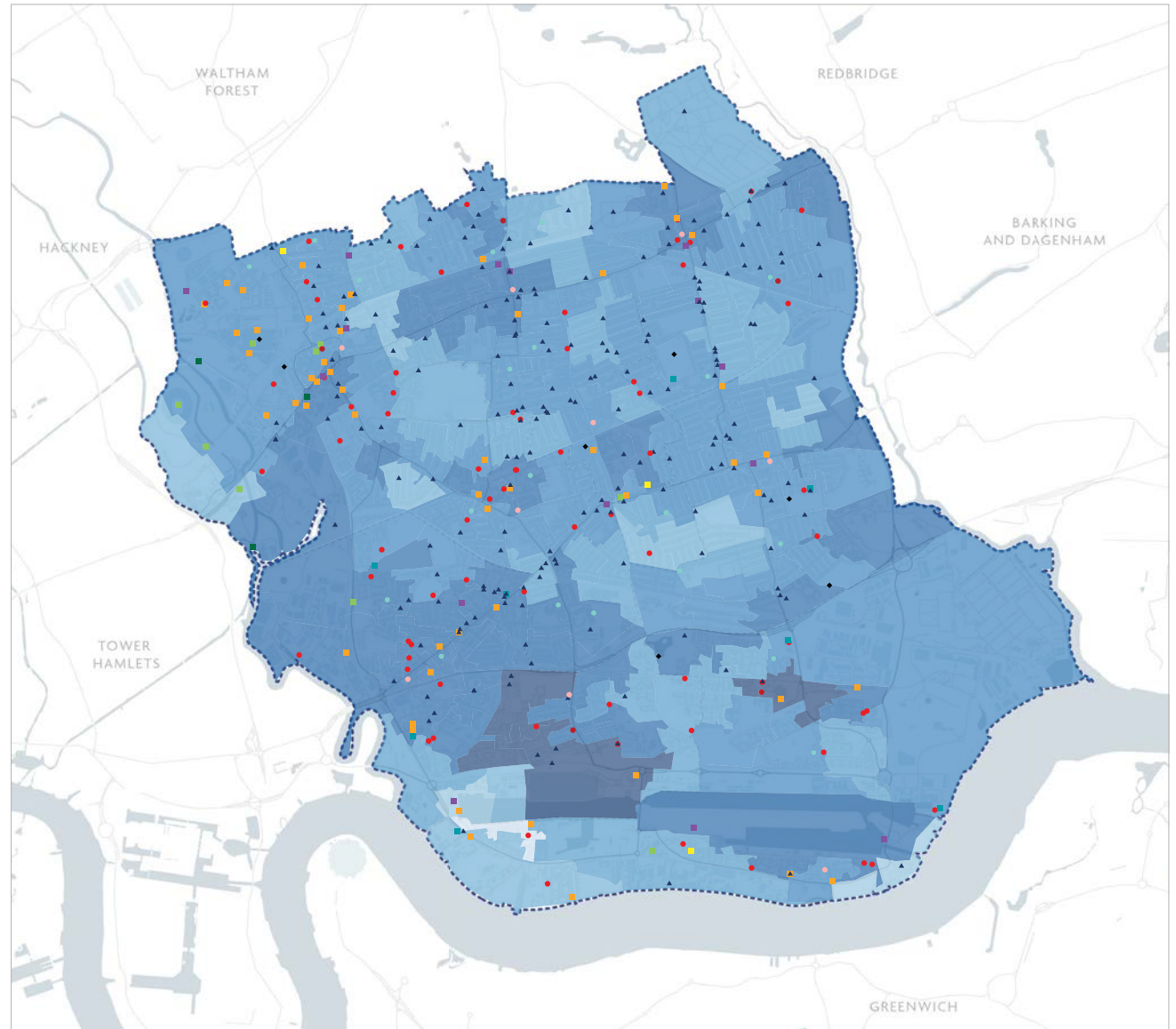
- In 2019 Newham ranked top in England for barriers to housing and services, and third for income deprivation affecting older people.
- 69% of areas (LSOAs) in Custom House and Canning Town are in the 20% of most deprived places in England and Wales.
- This is compared to only 7% of areas in Green Street and a borough average of 27%.
- In 2016, 22% of Newham's children were living in low-income families.

#### COMMUNITY FACILITIES

- |  |  |
|--|--|
| <span style="color: #4DB6AC;">●</span> Education with shared space | <span style="color: #FFB74D;">■</span> Public Houses                                   |
| <span style="color: #E53935;">●</span> Community Centres           | <span style="color: #000000;">◆</span> Public Toilets                                  |
| <span style="color: #E91E63;">●</span> Youth Zones                 | <span style="color: #000000;">▲</span> Places of Worship                               |
| <span style="color: #FFEB3B;">■</span> Social Clubs                | <span style="color: #4CAF50;">■</span> Music Venues, Cinemas, Theatres and Dance Halls |
| <span style="color: #F06292;">●</span> Libraries                   | <span style="color: #009688;">■</span> Galleries                                       |
| <span style="color: #9575CD;">■</span> Public/Exhibition Halls     | <span style="color: #006200;">■</span> Museums   |

#### INDEX OF MULTIPLE DEPRIVATION DECILE

- |  |   |
|--|---|
| <span style="background-color: #E0F7FA;">■</span> 10 | <span style="background-color: #42A5F5;">■</span> 5 |
| <span style="background-color: #B3E5FC;">■</span> 9  | <span style="background-color: #2196F3;">■</span> 4 |
| <span style="background-color: #90CAF9;">■</span> 8  | <span style="background-color: #00BCD4;">■</span> 3 |
| <span style="background-color: #64B5F6;">■</span> 7  | <span style="background-color: #00897B;">■</span> 2 |
| <span style="background-color: #42A5F5;">■</span> 6  | <span style="background-color: #004D40;">■</span> 1 |



## 4.0 BASELINE MAPPING

### 4.15. SELF-DESCRIBED POOR HEALTH

- Newham has the lowest healthy life expectancy for men across London boroughs, at 58.4 years.
- Newham has the largest number of deaths attributable to air quality.
- 14% of the borough's residents are either somewhat or very limited in their day-to-day activities due to a long-term health issue or disability.
- 6% of the borough's population self-describes themselves as being in bad or very bad health.

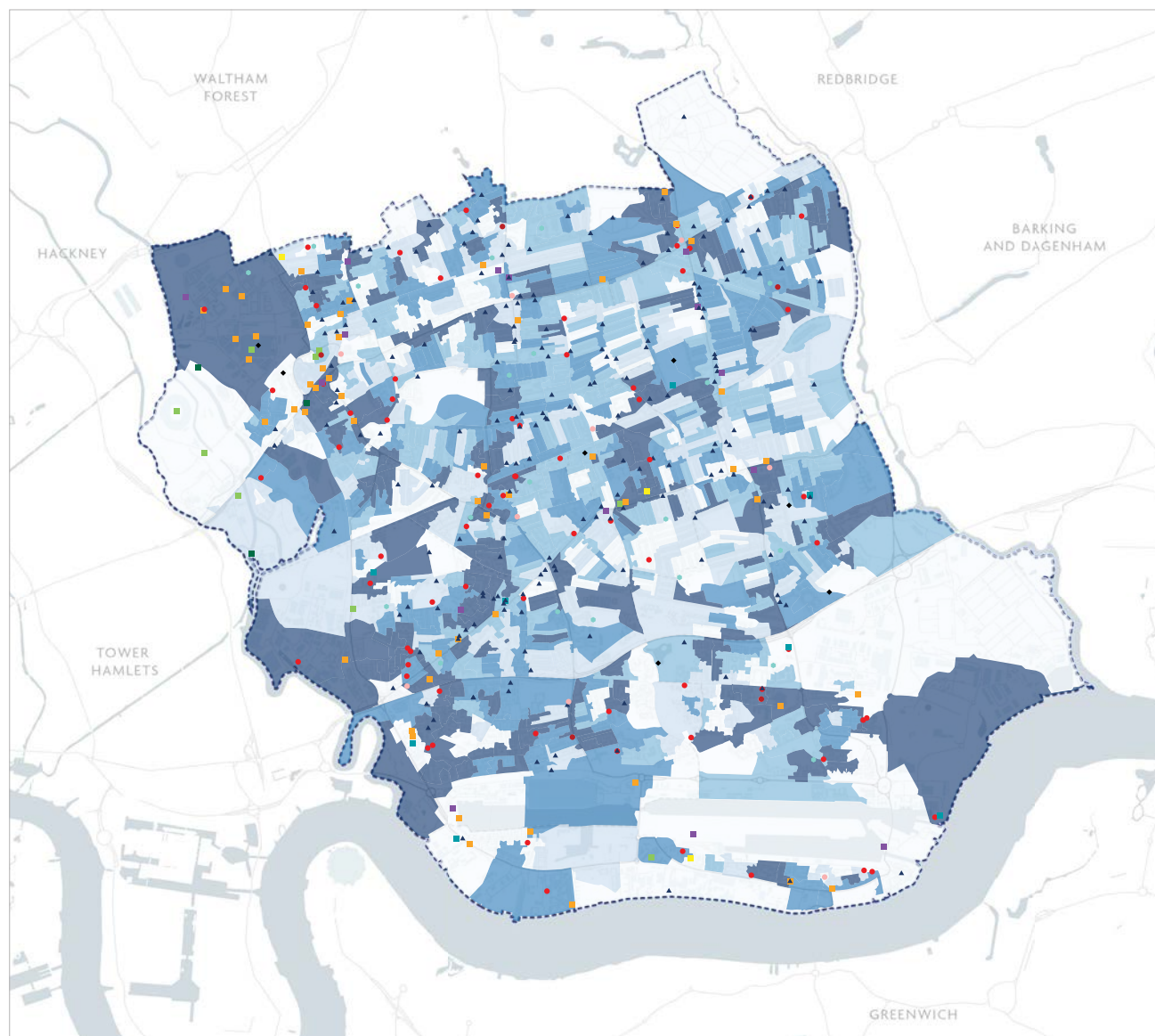
Data from 2011 Census

#### COMMUNITY FACILITIES

- |                               |   |
|-------------------------------|---|
| ● Education with shared space | ■ Public Houses                                   |
| ● Community Centres           | ◆ Public Toilets                                  |
| ● Youth Zones                 | ▲ Places of Worship                               |
| ■ Social Clubs                | ■ Music Venues, Cinemas, Theatres and Dance Halls |
| ● Libraries                   | ■ Galleries                                       |
| ■ Public/Exhibition Halls     | ■ Museums   |

#### PERCENT OF PEOPLE SELF-DESCRIBING AS HAVING BAD OR VERY BAD HEALTH

- |          |
|----------|
| ■ 0 - 4% |
| ■ 4 - 5% |
| ■ 5 - 6% |
| ■ 6 - 7% |
| ■ > 7%   |



## 4.0 BASELINE MAPPING

### 4.16. POPULATION DENSITY

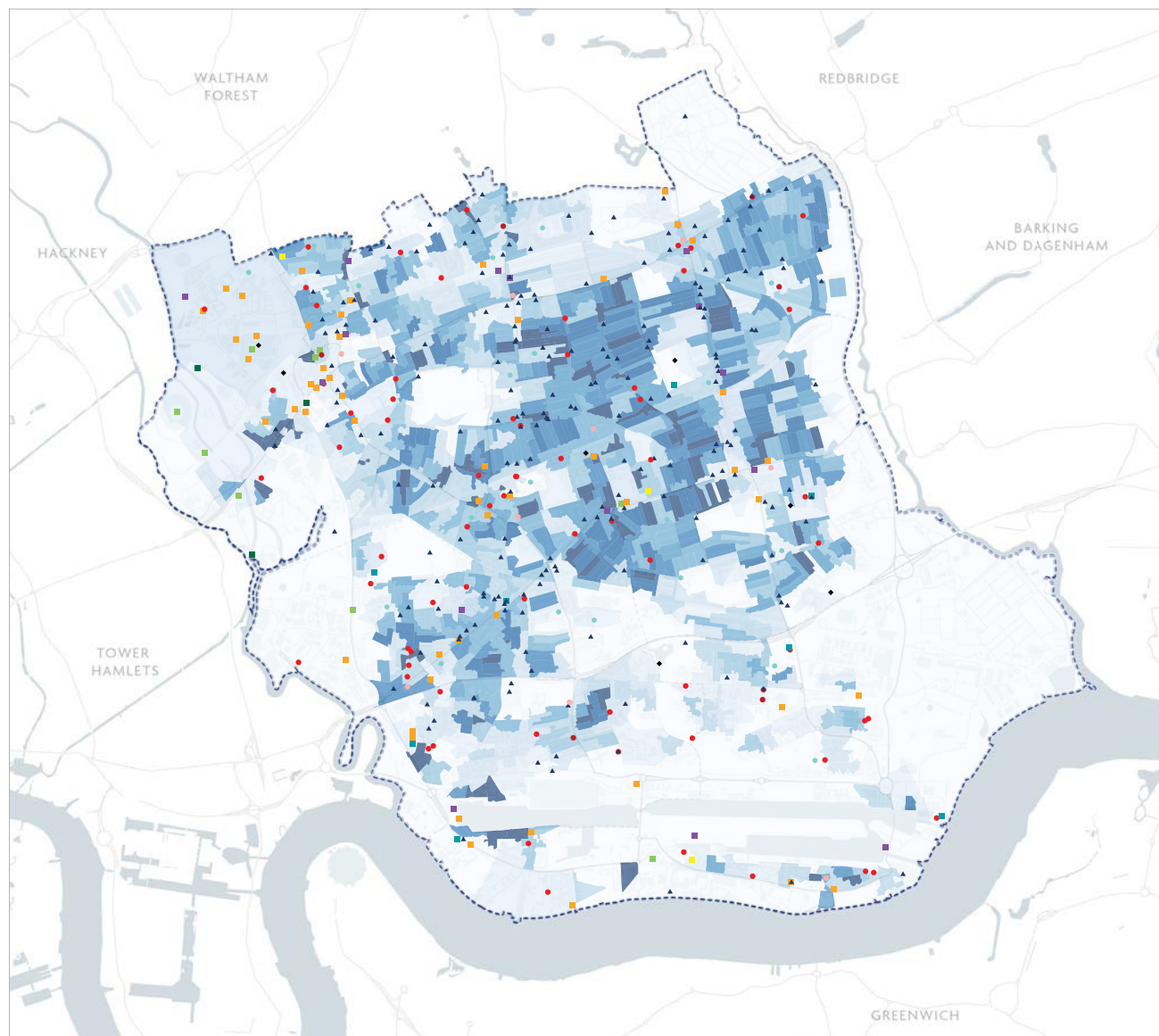
- Green Street has the highest population density with more than twice as many people per square kilometre as the borough average and 7 times the density of Beckton and the Royal Docks.
- Newham's average household size in 2018 was 3.1 people, the highest of all London boroughs and Newham ranked highest in the country (30.5%) for households with more than 1.5 people per bedroom.
- Outdoor and public spaces as well as shared community facilities are therefore of particular importance for households that may be overcrowded and lack private amenities or facilities.

#### COMMUNITY FACILITIES

- |                               |   |
|-------------------------------|---|
| ● Education with shared space | ■ Public Houses                                   |
| ● Community Centres           | ◆ Public Toilets                                  |
| ● Youth Zones                 | ▲ Places of Worship                               |
| ■ Social Clubs                | ■ Music Venues, Cinemas, Theatres and Dance Halls |
| ● Libraries                   | ■ Galleries                                       |
| ■ Public/Exhibition Halls     | ■ Museums   |

#### POPULATION PER KM<sup>2</sup>

- |                   |                   |
|-------------------|-------------------|
| ■ 0 - 5,739       | ■ 16,806 - 18,519 |
| ■ 5,739 - 10,341  | ■ 18,519 - 20,461 |
| ■ 10,341 - 12,672 | ■ 20,461 - 23,103 |
| ■ 12,672 - 14,887 | ■ 23,103 - 26,401 |
| ■ 14,887 - 16,806 | ■ > 26,401        |



## 4.0 BASELINE MAPPING

### 4.17. POPULATION CHANGE

- According to the GLA's housing capacity-based population projections, Newham's population is due to reach 456,464 by 2038, representing a growth of 29% from 2021.
- This growth is very unevenly distributed with the west and south of the borough experiencing much higher population growth than the centre and east of the borough where some neighbourhoods are projected to see up to a 10% decrease in population over 17 years.
- As the total population grows, so too will the number of residents aged 65 and older with GLA projections predicting this group to grow from 28,701 people in 2021 to 55,093 in 2038, a 92% growth that will mean this age group goes from making up just 8% of the population in 2021 to 12% in 2038.
- New community facilities should meet the needs of future residents, ensuring that new facilities are delivered alongside housing in places such as Stratford, Beckton and the Royal Docks where growth is expected to be the most significant. This is particularly important in parts of the borough where there is currently a deficit in community facilities such as Gallions Reach and the Royal Docks.

#### GLA IDENTIFIED CAPACITY SCENARIO POPULATION GROWTH PROJECTIONS 2021 – 2038

