

## **4.0 BASELINE MAPPING**

## 4.0 BASELINE MAPPING

### 4.1. MAPPING METHODOLOGY

- 4.1.1. The collection of data via GIS provides the council with a spatial understanding of the location of community facilities in Newham, and how these relate to each of Newham's neighbourhoods and the distribution and quantum of facilities in relation to population demographics.
- 4.1.2. The mapping has identified distribution patterns of community facilities, both now and across the plan period, facilities at risk and those being brought forward in the development pipeline. Services and facilities in the borough have also been assessed in relation to the socio-economic data in the borough.
- 4.1.3. These socio-economic datasets have been selected to understand how the spatial provision of community facilities overlaps with the potential need for these spaces and the services they provide. The mapping reflects the distribution of deprivation, youth populations, religious communities, population density and health to identify neighbourhoods in the borough where the current network of facilities may be failing to meet local needs.
- 4.1.4. The base map opposite shows the extent of the baseline mapping and the location of the neighbourhood areas which have been referenced throughout this chapter. Analysis on the Characterisation Study boundaries is on page 46.
- 4.1.5. Data sources are included in Appendix A.

#### KEY

- - Community Neighbourhood Boundary
- Borough Boundary



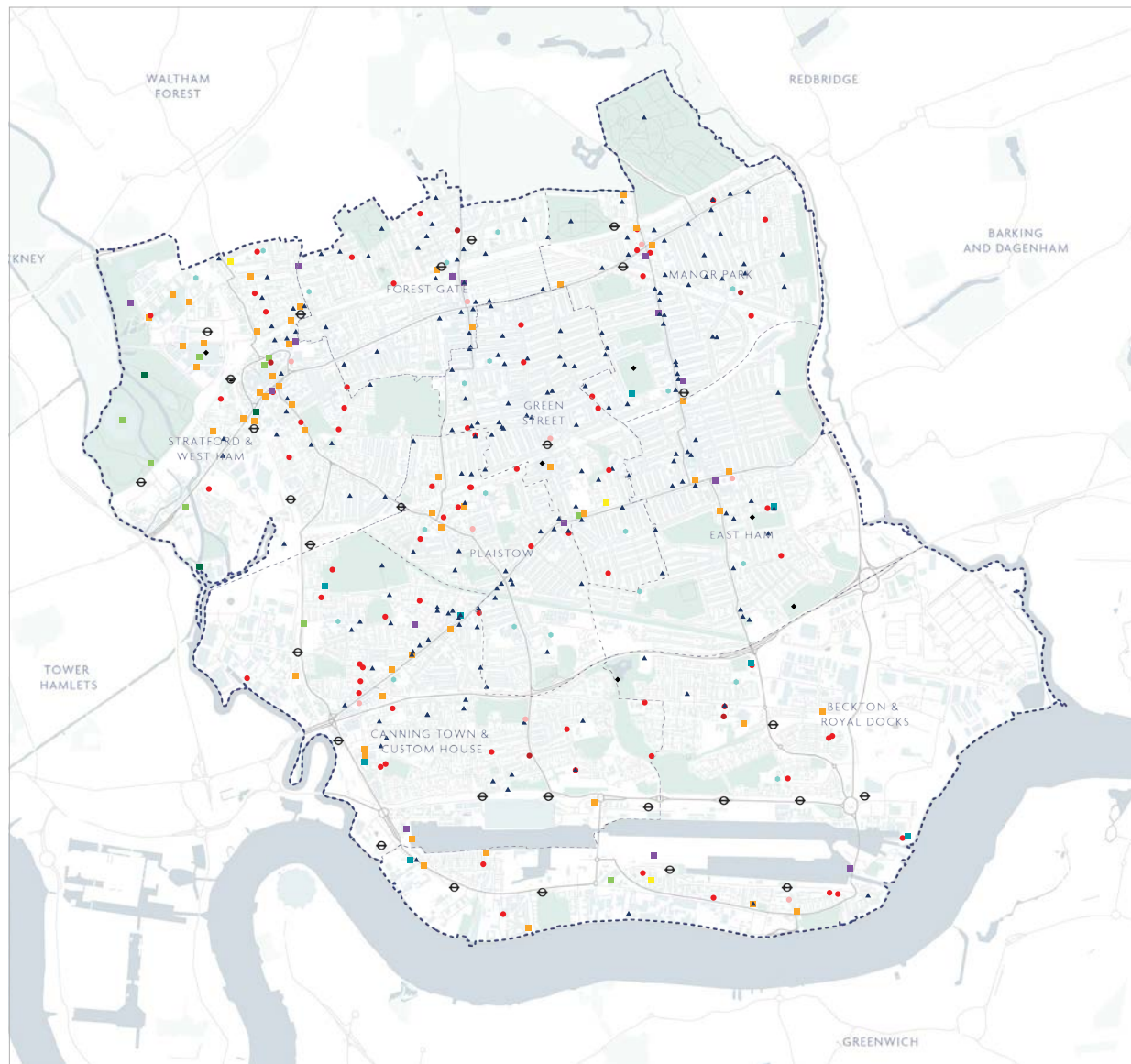
## 4.0 BASELINE MAPPING

### 4.2. DISTRIBUTION

- 416 mapped community facilities across the borough.
- Places of worship make 50% of these.
- Stratford and West Ham has the highest number of community facilities, closely followed by Custom House and Canning Town (76 and 73 respectively).
- Green Street has the highest density of community facilities per km<sup>2</sup> and the highest population density.
- East Ham has the fewest number of community facilities, the fewest community facilities per resident and the second lowest density of community facilities (behind Beckton and the Royal Docks).

#### COMMUNITY FACILITIES (TOTAL NUMBERS)

- Education with shared space (20)
- Community Centres (73)
- Youth Zones (5)
- Social Clubs (3)
- Libraries (10)
- Public/Exhibition Halls (15)
- Public Houses (58)
- ◆ Public Toilets (7)
- ▲ Places of Worship (206)
- Music Venues, cinemas, theatres, art centres and dance halls (9)
- Galleries (7)
- Museums (3)



## 4.0 BASELINE MAPPING

### 4.3. COMMUNITY CENTRES, LIBRARIES, YOUTH ZONES, EDUCATION WITH SHARED SPACES

- 73 community centres have been identified through the baseline mapping. As a typology they are generally evenly spread across the neighbourhood areas. The highest number of centres (19) are located in Custom House and Canning Town compared. The exceptions is East Ham and Forest Gate that have 2 centres each.
- There are 10 libraries in total and all neighbourhoods have at least 1. Beckton and Royal Docks and Canning Town and Custom House have 2 each.
- There are 5 youth zones in the borough. Plaistow, Green Street and East Ham have none.
- Compared to the 100+ schools in the borough, only 20 were identified in this study as having shared space. Plaistow has the highest number of schools with shared spaces (4). Other neighbourhood areas have on average 2-3 facilities with shared space.

#### COMMUNITY FACILITIES

- Community Centres
- Youth Zones
- Libraries
- Education with shared space





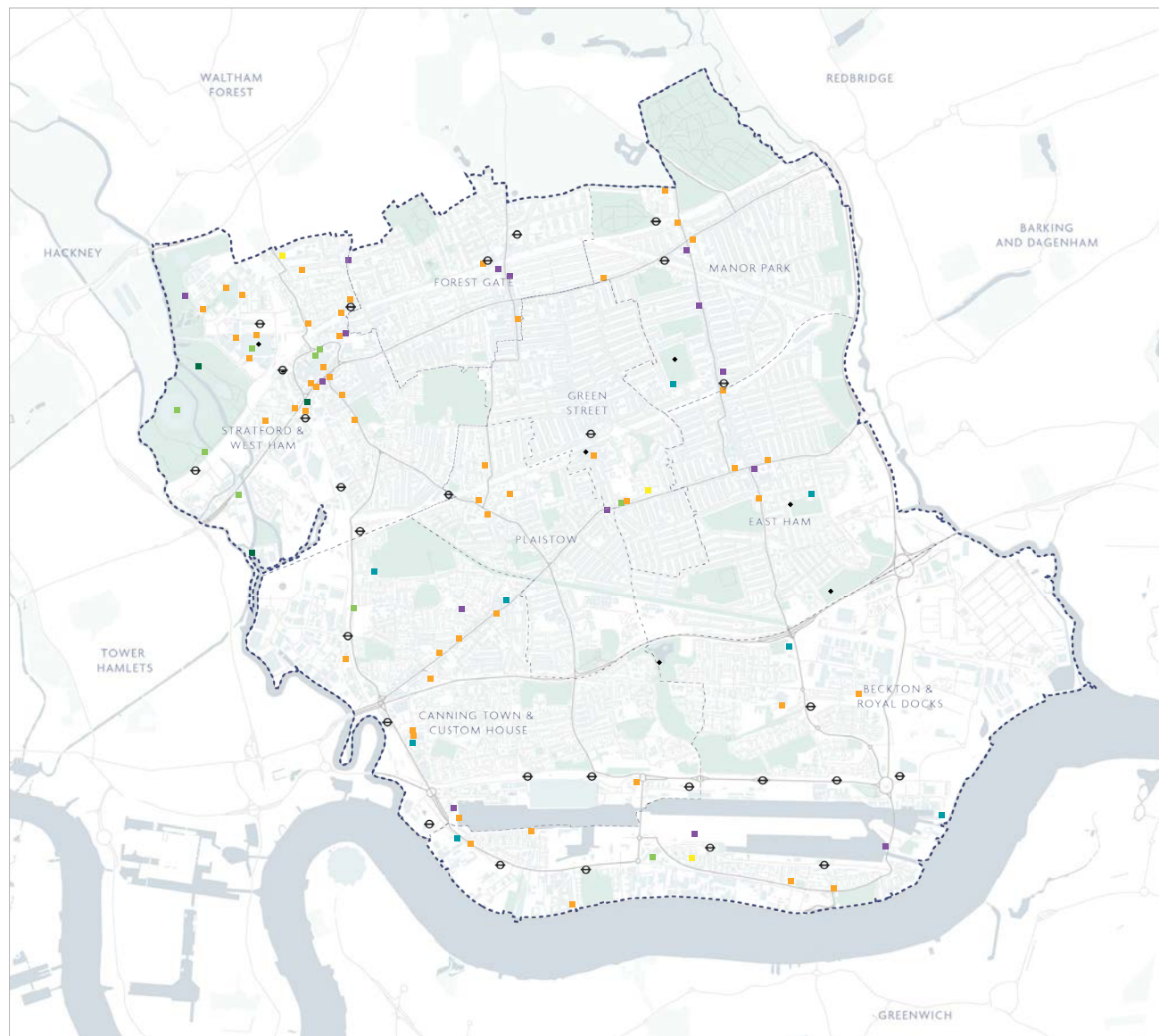
## 4.0 BASELINE MAPPING

### 4.4. CULTURAL FACILITIES, PUBLIC HOUSES, SOCIAL CLUBS, PUBLIC TOILETS

- Cultural facilities have the fewest numbers across the neighbourhood areas. There are a total of 10 music venues, dance halls, cinemas and theatres.
- Stratford and West Ham has the highest cluster of cultural facilities. However it has no galleries. Out of the 7 galleries identified, Beckton and Royal Docks and Canning Town have 3 each.
- 58 public houses have been mapped in the borough. Similarly to culture, they are clustered in Stratford and West Ham (24). This is also a Town Centre Location.
- Plaistow, Forest Gate, Green Street, East Ham and Manor Park have 2-4 public houses. These areas also have no social clubs. The exception is Green Street which has 1 social club but has no public halls or exhibition halls.
- There were only 7 public toilets across the borough. A number of toilets were identified in the baseline mapping but are currently not in use.

#### COMMUNITY FACILITIES

- |                           |   |
|---------------------------|---|
| ■ Social Clubs            | ■ Music Venues, Cinemas, Theatres and Dance Halls |
| ■ Public Houses           | ■ Galleries                                       |
| ■ Public/Exhibition Halls | ■ Museums   |
| ◆ Public Toilets          |   |



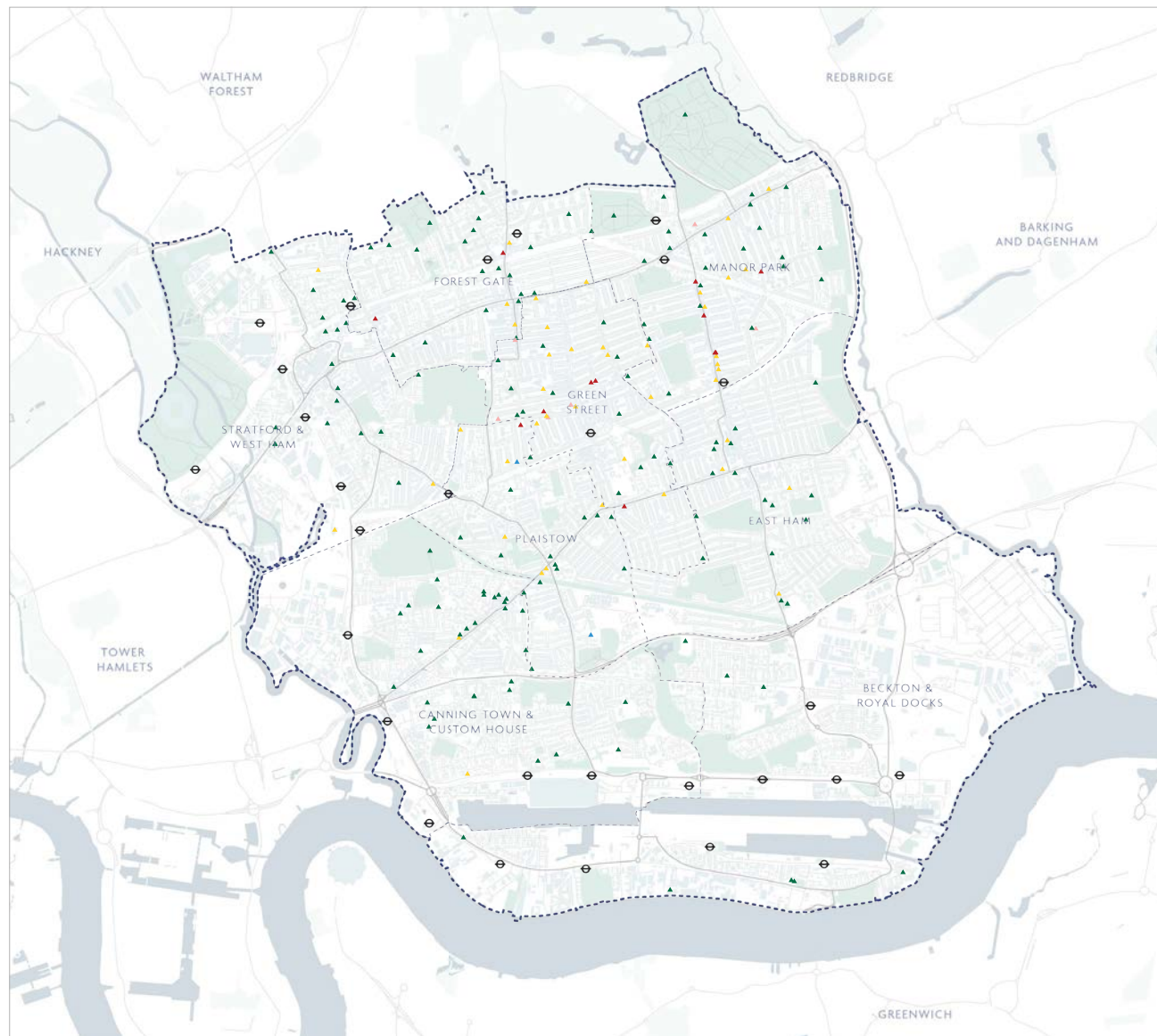
## 4.0 BASELINE MAPPING

### 4.5 PLACES OF WORSHIP

- There are 206 recorded places of worship in the borough.
- Beckton and Royal Docks has a significantly lower number of places of worship than other neighbourhood areas with 7 facilities.
- 71% of the borough's places of worship are Christian (146).
- 20% of the places of worship are Muslim (42)
- There are 11 Hindu places of worship and 6 Sikh places of worship.
- There are 2 places of worship for Buddhism.
- There are no Jewish Synagogues in Newham.

#### PLACES OF WORSHIP

- ▲ Buddhism
- ▲ Christianity
- ▲ Hinduism
- ▲ Islam
- ▲ Sikhism



## 4.0 BASELINE MAPPING

### 4.6. RELATIONSHIP TO TOWN CENTRE LOCATIONS

- 14% of community facilities are located within a GLA town centre designation including Metropolitan, Major and District Centres.
- A further 3% are located in the LBN Local Plan Local Centre boundaries, defined in the Local Plan as local centres and shopping parades. It should be noted that clusters of facilities are located on smaller high streets including Barking and Romford Road and High Street North or are located within more local residential areas such as Plaistow, Green Street and Manor Park neighbourhoods.
- The Local Plan identifies 6 Community Facility Opportunity Areas in out of town centre locations.
- 48% of community facilities are in the best-connected parts of the borough by public transport (with Public Transport Accessibility Levels (PTALs) of 4 or above). Only 6% are in the least accessible parts of the borough (with scores of 1a or 1b).

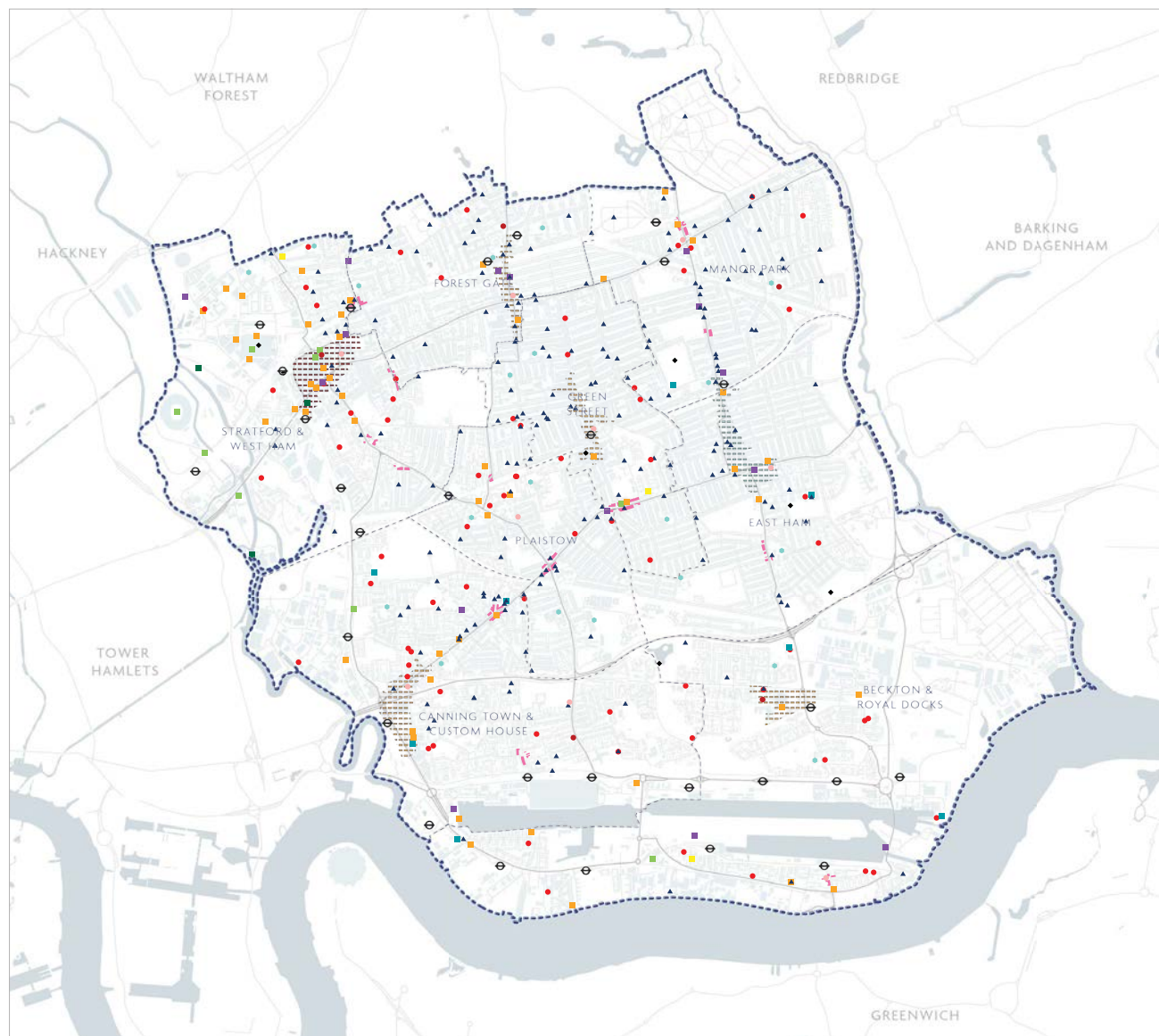
#### TOWN CENTRE DESIGNATIONS

- Metropolitan
- Major
- District
- Local Centres

#### COMMUNITY FACILITIES

- Schools with shared spaces
- Community Centres
- Youth Zones
- Social Clubs

- Libraries
- Public Houses
- Public/Exhibition Halls
- Public Toilets
- Places of Worship
- Music Venues, Cinemas, Theatres, and Dance Halls
- Galleries
- Museums





## 4.0 BASELINE MAPPING

### 4.7 OPPORTUNITY AREAS

- A number of the largest LBN Strategic Site Allocations in the south of the borough are within areas that currently have few community facilities. There is a particular lack of public toilets, museums, music venues, cinemas, theatres, galleries, dance halls, schools with shared facilities or art centres in this part of the borough.
- There are five sites with requirements for the provision of community facilities: Connaught Riverside – S23, Thames Wharf – S08, Coolfin North – S06, Beckton Riverside – S01 and Queen’s Market – S27.
- All of these site allocations, with the exception of Queen’s Market, where healthcare uses are specified, allocate educational uses.
- There are 27 site allocations that broadly reference community facilities. Of these, 7 do not specifically mention community facilities but suggest town centre uses or a new local centre (S02, S05, S11, S16, S18, S21, S22).
- Community uses, civic spaces and community infrastructure are included in 10 sites (S03, S09, S13, S14, S15, S19, S25, S26, S28, S29). A further 5 sites make specific provisions for schools, (S01, S06, S08, S23, S31), 3 sites refer to cultural uses (S04, S24, S30). There is 1 reference to healthcare (S27) and faith (S10) uses.
- Sites S12, S18, S07, S20, S19, S11, S31 and S21 all fall in areas with few community facilities.

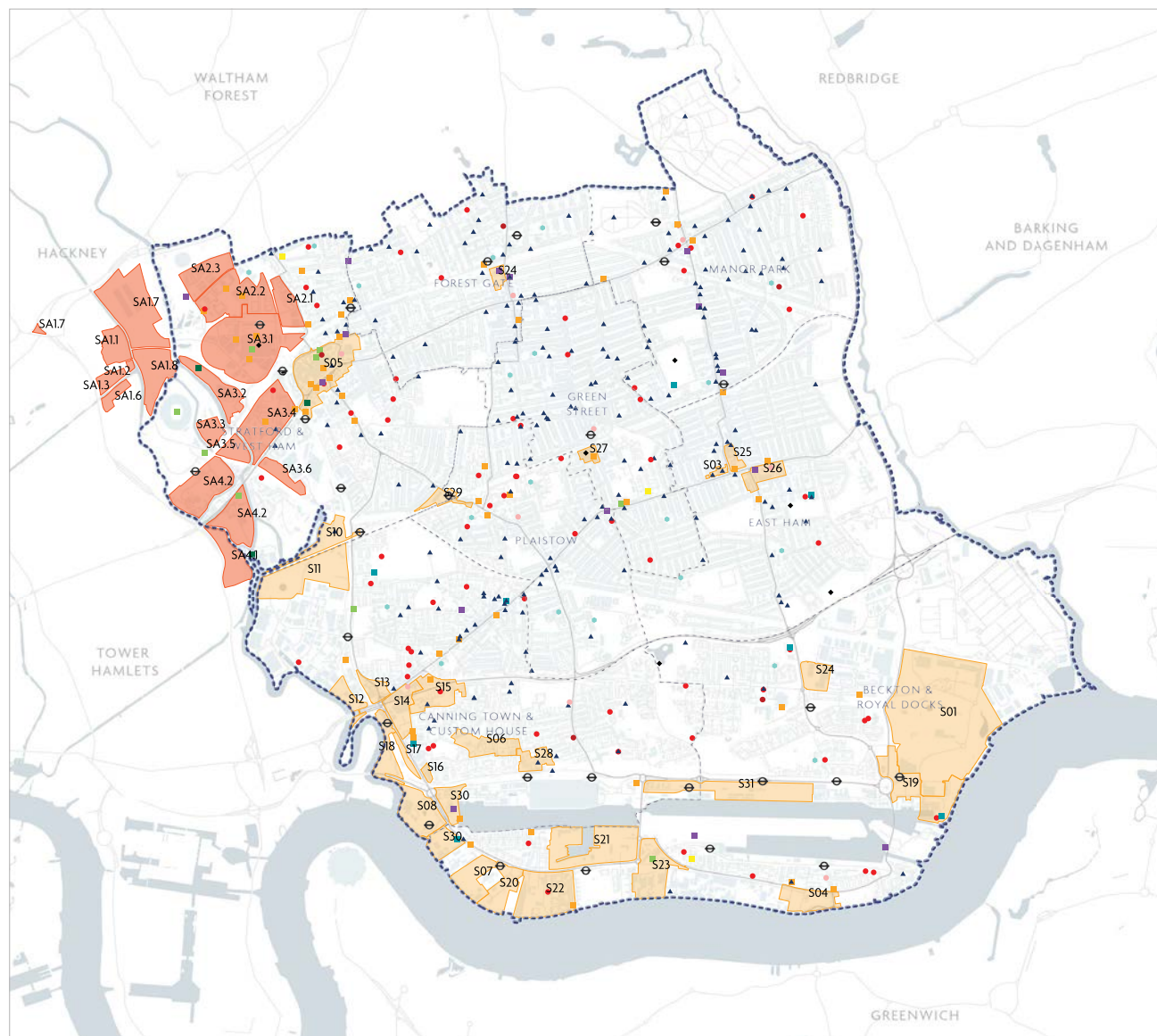
#### COMMUNITY FACILITIES

- Education with shared space
- Community Centres
- Youth Zones
- Social Clubs
- Libraries
- Public/Exhibition Halls
- Public Houses
- Public Toilets
- Places of Worship

- Music Venues, cinemas, theatres, art centres and dance halls
- Galleries
- Museum

#### LOCAL PLAN DESIGNATIONS

- Strategic Sites allocated by LBN
- Strategic Sites allocated by LLDC





## 4.0 BASELINE MAPPING

### 4.8. DEVELOPMENT CONTEXT: GAIN AND LOSS

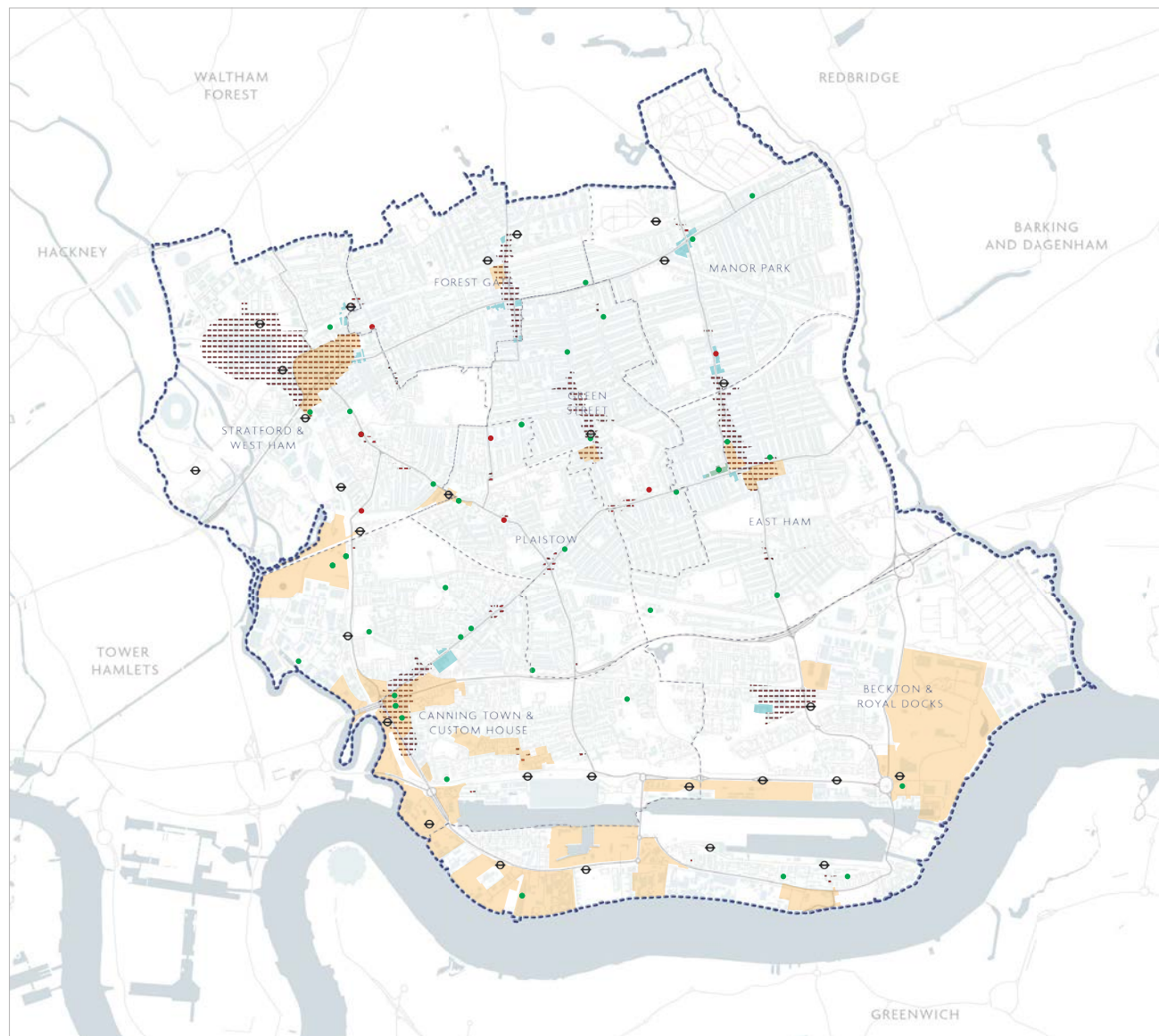
- Between 2018 (adoption of the Local Plan) and 2021, 49 planning applications with either a gain or a loss of D1, D2 or A4 uses were approved, started or completed within the Newham Local Planning Authority area.
- There were 7 applications approved which resulted in a loss of community facility floorspace.
- The largest of these losses will see the existing East Ham Working Men's Club on Boleyn Road demolished and re-provided alongside a five storey building with 42 new residential units. The new community space will replace only 55% of the previous site's floorspace.
- There are 3 applications for the co-location of new residential units resulting in a loss of community facility floorspace at the Baptist Tabernacle, the Coach and Horse and the Manbey Arms.
- Only 2 applications with a proposed gain of community facility floorspace were located within a Community Facility Opportunity Area.
- One application with a loss of community facility floorspace was approved within a Community Facility Opportunity Area.

#### DESIGNATIONS

- Town Centres (Metropolitan, Major, District and Local Centres).
- Community Facility Opportunity Areas
- Strategic Sites

#### PLANNING APPLICATIONS PROPOSING D1, D2 OR A4 LOSS OR GAIN BETWEEN 2018 – 2021

- Loss of D1, D2 or A4 space
- Gain of D1, D2 or A4 space



## 4.0 BASELINE MAPPING

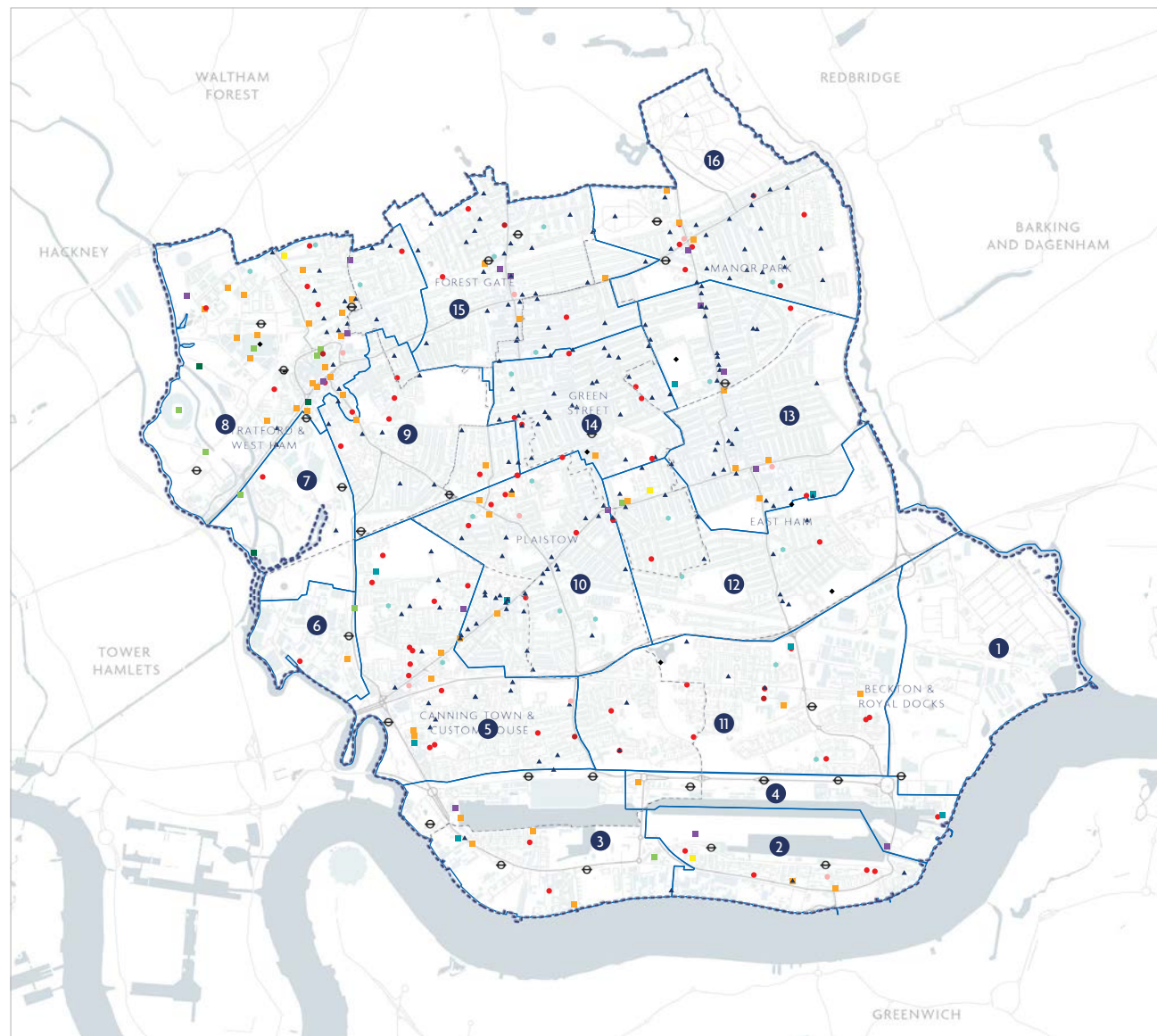
### 4.9. RELATIONSHIP TO CHARACTERISATION STUDY

- The new character areas emerging from the characterisation study provide additional nuance to the neighbourhood distribution of community facilities.
- The areas of Manor Road, Gallions Reach, Royal Albert North and Three Mills have the fewest community facilities with less than 5 facilities in each area.
- Areas such as Gallions Reach and Manor Road previously fell within the boundaries of community neighbourhoods (Beckton and the Royal Docks and Canning Town and Custom House respectively) that were not identified as facing a deficit in facilities.
- Stratford and Maryland has the highest number of facilities with 67 followed by Plaistow with 50.
- The highest density of facilities can be found in Green street (25 facilities per sqm) followed by Plaistow and Stratford and Maryland (20 and 18.5 facilities per sqm respectively).
- The tables on page 47-48 show the number and types of community facilities in each character area. The density of facilities in each character area was also calculated to identify places where facilities were more sparsely distributed.

#### KEY

- |                                  |                                  |
|----------------------------------|----------------------------------|
| 1. Gallions Reach                | 9. West Ham                      |
| 2. North Woolwich                | 10. Plaistow                     |
| 3. Royal Victoria                | 11. Beckton                      |
| 4. Royal Albert North            | 12. East Ham South               |
| 5. Canning Town and Custom House | 13. East Ham                     |
| 6. Manor Road                    | 14. Green Street                 |
| 7. Three Mills                   | 15. Forest Gate                  |
| 8. Stratford and Maryland        | 16. Manor Park and Little Ilford |

- Characterisation Study Boundaries
- Borough Boundary



## 4.0 BASELINE MAPPING

DATA	GALLIONS REACH	NORTH WOOLWICH	ROYAL VICTORIA	ROYAL ALBERT NORTH	CANNING TOWN & CUSTOM HOUSE	MANOR ROAD	THREE MILLS	STRATFORD AND MARYLAND
<b>DISTRIBUTION AND POPULATION</b>								
Total community facilities	0	12	12	4	41	3	4	67
Community facilities/km <sup>2</sup>	0	7.3	5.4	3.9	14.8	4.4	3.3	18.5
<b>COMMUNITY FACILITY TYPE</b>								
Education with shared spaces	0	0	0	0	2	0	0	3
Community centres	0	5	2	1	12	1	1	8
Youth zones	0	0	0	0	1	0	0	1
Social clubs	0	1	0	0	0	0	0	1
Libraries	0	1	0	0	2	0	0	1
Public houses	0	2	4	0	4	1	0	23
Public toilets	0	0	0	0	0	0	0	2
Places of worship	0	2	3	0	17	0	0	17
Cultural facilities (music venues, dance halls, cinemas, theatres)	0	0	1	1	0	1	2	5
Public halls or exhibition halls	0	1	1	1	1	0	0	4
Cultural facilities (galleries)	0	0	1	1	2	0	0	0
Cultural facilities (museums)	0	0	0	0	0	0	1	2



## 4.0 BASELINE MAPPING

DATA	WEST HAM	PLAISTOW	BECKTON	EAST HAM SOUTH	EAST HAM	GREEN STREET	FOREST GATE	MANOR PARK AND LITTLE ILFORD
<b>DISTRIBUTION AND POPULATION</b>								
Total community facilities	19	50	22	22	43	37	44	36
Community facilities/km <sup>2</sup>	10.5	20	6.6	7.6	14.4	25	17.8	12.4
<b>COMMUNITY FACILITY TYPE</b>								
Education with shared spaces	0	4	2	3	1	1	3	1
Community centres	6	7	9	3	3	6	3	5
Youth zones	0	0	1	0	0	0	1	1
Social clubs	0	0	0	1	0	0	0	0
Libraries	0	1	1	0	1	1	1	1
Public houses	2	6	2	1	4	1	4	3
Public toilets	0	0	1	1	2	1	0	0
Places of worship	11	30	5	12	28	27	30	24
Cultural facilities (music venues, dance halls, cinemas, theatres)	0	0	0	1	0	0	0	0
Public halls or exhibition halls	0	1	0	0	3	0	2	1
Cultural facilities (galleries)	0	1	1	0	1	0	0	0
Cultural facilities (museums)	0	0	0	0	0	0	0	0