

YOUR CUSTOM HOUSE.

WE ARE NEWHAM.

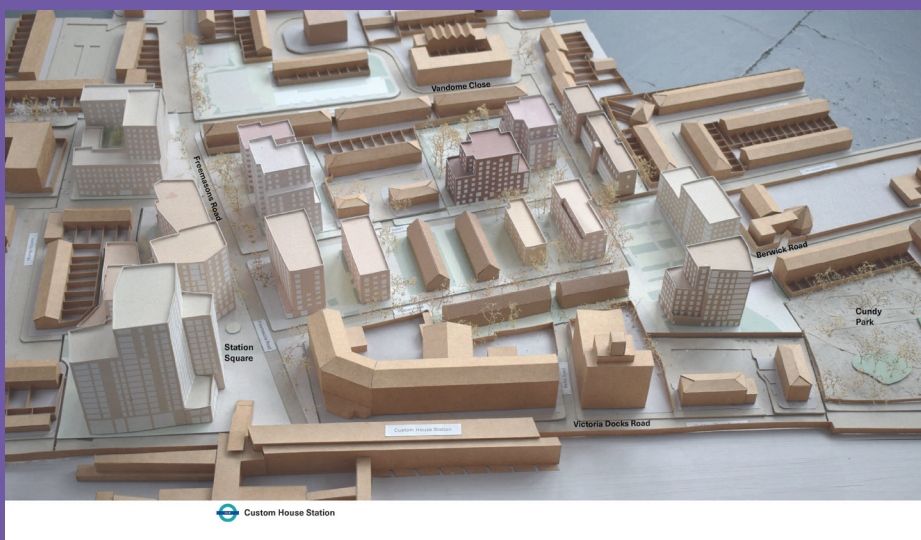
KICKSTARTING THE REGENERATION

The Steering Group and other residents have told us that they want to see progress being made, so we have chosen three “kickstart” standalone sites to get things moving by building the first new genuinely affordable homes as part of the regeneration. The first two sites are at William Paton Gardens and 20-22 Freemasons Road, which are the first part of the Custom House Masterplan, and the third is at Vandome Close.

We have selected two contractors to design and submit planning applications and build the homes: Hill Partnerships for William Paton Gardens and 20-22 Freemasons Road and Bugler Developments for Vandome Close. Interviews took place in October last year, with two members of the Steering Group taking part in the selection process.

Since their appointment, both Hill and Bugler have worked closely with us to design these kickstart sites. The designs have been reviewed, updated and presented to the Custom House Steering Group and residents at co-

Continued on page 2



Custom House Masterplan Phase 1



One of May's consultation events

KICKSTARTING THE REGENERATION (CONT'D)

production events which we have held at the Regeneration Hub. These designs have now been submitted to planning.

Work on the wider masterplan for Phase 1 has restarted – it was paused at the end of 2020. We and Adam Khan Architects have been working with residents to update the plans ahead of a ballot which, following Cabinet approval on 5 July and subject to a successful summer of comprehensive engagement with residents, is due to take place this October. The paper presented at Cabinet set out the direction of travel on how Custom House will be restored and regenerated and sought approval to prepare for and undertake the ballot.

This decision by the Cabinet marks a key milestone for the regeneration of Custom House and signals the Council's



Sketch view of the neighbourhood squares looking north west from the end of Leslie Road

intention to improve the area through co-production.

The ballot will be followed by the submission of an outline planning application for the Phase 1 masterplan area, if residents vote in favour of the proposals.

Before the ballot we will publish a landlord offer and confirm the outline masterplan that will go to the Planning Committee. We want as many residents as possible to get involved in developing these plans, so please look out for more events at the Hub and online engagement opportunities.

FORTHCOMING EVENTS

Wednesday pop-ups

We're on the road at the following pop-up events:

DATE	TIME	ADDRESS
3 August 2022	3pm-5pm	Hartington Road
10 August 2022	3pm-5pm	Coolfin Road
17 August 2022	3pm-5pm	Leslie Road
24 August 2022	3pm-5pm	Foot of Custom House Station
31 August 2022	3pm-5pm	Vandome Close

Landlord offer workshops

DATE	TIME	TOPIC
Monday 1 August 2022	6-7.30pm	Secure tenants
Tuesday 2 August 2022	6-7.30pm	Temporary accommodation
Thursday 4 August 2022	6-7.30pm	Homeowners
Friday 5 August 2022	6-7.30pm	Private renters (includes a discussion)

Other events

- Monday at the Hub 3-5pm**
 All ages welcome. Children's play, educational activities, paint-and-play and ping-pong. Parents, please accompany your children.
- Our Newham Money drop-in surgery**
Every first Tuesday of the month at the Hub 10am-3pm
 Benefit, income and debt advice; smart spending/ budgeting; emergency support; employment rights

PUTTING EMPTY SHOPS TO GOOD USE

We have secured levelling up funding from the UK Government to help bring some of the vacant shops in Normandy Terrace back into temporary (“meanwhile”) use, ahead of the building being demolished as part of the regeneration.

Using this funding, which will be matched by the Council, we intend to carry out work to five shops. Some of these shops will likely be used to rehouse commercial tenants whose premises will be demolished earlier than Normandy Terrace.

However, we anticipate there being at least two shops which will be available for local businesses. We are currently having the shops surveyed and are establishing the extent of the work required. Once we have confirmed what work we are carrying out and how long it will take, we will invite applications from prospective businesses.



Freemasons Road

The applications will be assessed against criteria such as whether it brings something new to the range of shops on Freemasons Road, if this will attract more shoppers and if there is demand from residents for what these applicants offer.

Full details of how applications can be made and how they will be assessed will be provided when we officially open the application process. We anticipate that this will be towards the end of the summer or start of the autumn.

STEERING GROUP MEMBER PROFILE

The Custom House Steering Group is formed of Custom House residents who meet the Council’s Regeneration Team every month to discuss and plan the regeneration.

Meet Tony Subryan

Tony Subryan has been on the Steering Group since it was formed, working with the Council to support the regeneration proposals through co-production.



“ I’m Tony Subryan, a long standing resident of Custom House and an active member of the community through the volunteering work I have been doing with the People’s Empowerment Alliance for Custom House (PEACH) since 2015 around issues of housing and the regeneration. Through this I came to learn about the appalling situation facing Mears tenants and I thank the

work of PEACH, who were instrumental in engaging with Newham Council to end the contract with Mears.

I’ve also spent time listening to the community’s concerns around the future regeneration for Custom House and what it means for us as residents.

I have worked with the community to ensure that we have a seat at the table so our voices are represented. As a result, in 2019 you elected me as one of your community representatives to work with the Council in the co-production on the regeneration of

Custom House as a member of the Custom House Steering Group.

As your elected representative, I have advocated pushing Newham Council to include Mears tenants in the housing offer and working to ensure that residents get best deal possible. However, more work needs to be done to ensure that all voices across the regeneration area are being heard. So I encourage you to get involved and speak to us as your local representatives, as by working together we can instigate meaningful change. ”

THE OTHER STEERING GROUP MEMBERS ARE:

Terrence Regan, Thelma Odoi, Denise Evans-Barr, Sarah Harper, Cynthia Poyton, Larisa Chayka, Marcia Santana and Oumar Diouck.

If you would like more information, or are interested in getting involved with the Custom House Steering Group, please get in touch with NewmanFrancis, the independent advisors, by calling 0800 644 6040 (Freephone) or emailing: customhouse@newmanfrancis.org

You can also contact your community reps directly: customhousteeringgroup@gmail.com



Erlend Birkeland in Cundy Park

GETTING MORE PLAY OUT OF OUR PARKS

by Erlend Birkeland

How can we make the weather nicer? Or, said another way, how can we make it nice to be outside whatever the weather? How can we motivate more lifelong play in Custom House's parks?

Outdoor activity keeps us healthier, more focused, happier and more connected, and play helps children develop socially, emotionally, cognitively, physically, and creatively. Yet today, kids spend more time on devices. Rainy days can go by without any outdoor play at all.

I'm a student from Diploma 20 at the Architectural Association School of Architecture. I'm studying how to create public spaces that motivate lifelong play, activity and curiosity. Within that, I'm exploring ways designers and communities can work together to make public spaces more fun and welcoming.

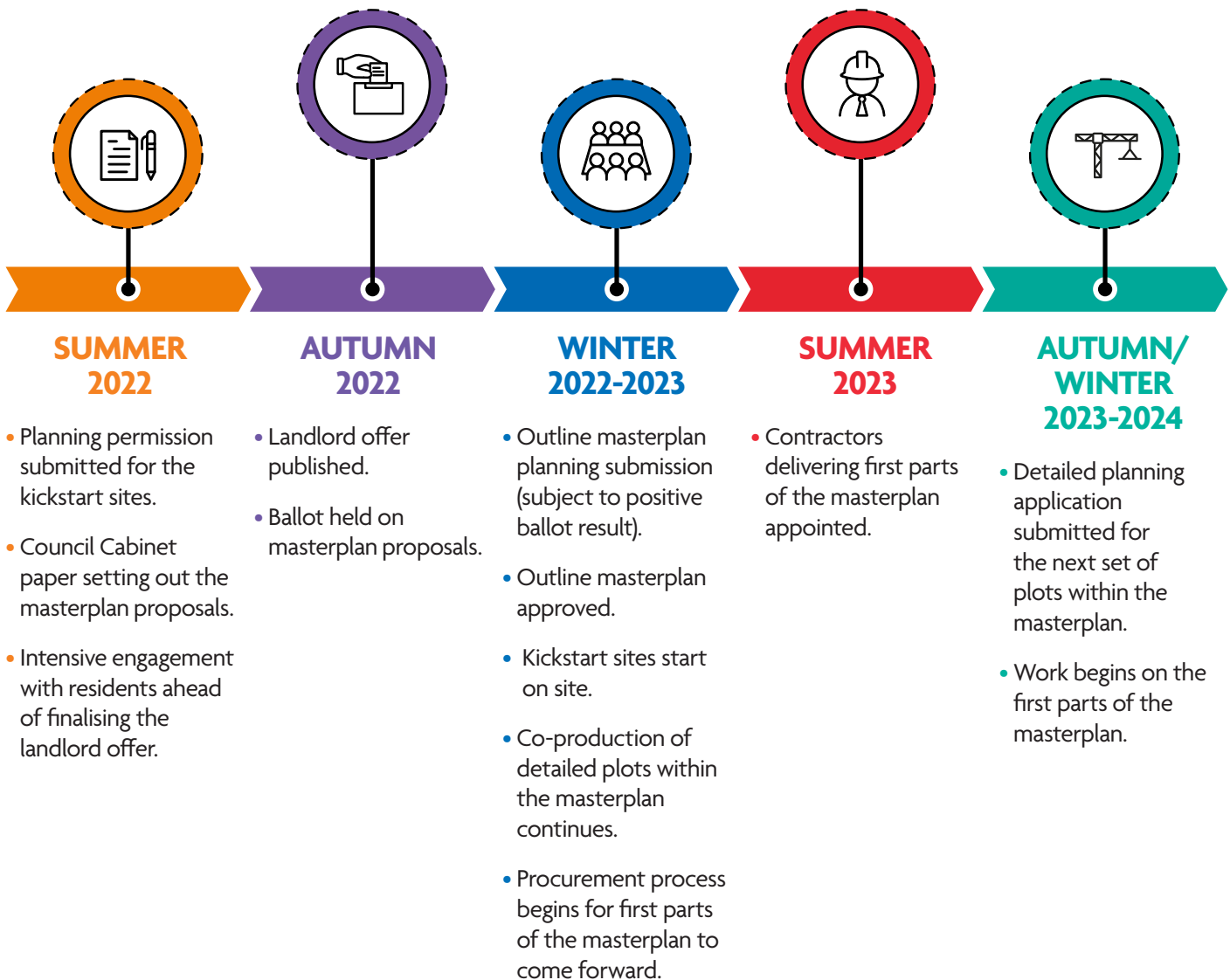
An obstacle to being active in parks is that we must bring our own equipment to use the parks' facilities. There are tennis courts but they're only useful if you have tennis rackets. You must bring a football to a football pitch. The problem is that not everyone can carry equipment for their kids on every trip to the park. Not everyone can buy equipment to keep or merely to test out once.

I believe that shared facilities should be available for everyone. Together with my co-students Iris Meng, Tung Li and Wu Wanling, we built a moving activity library and brought it to Becton District Park, lending out free equipment. I've recently taken it to Canning Town Recreational Ground. The feedback is positive, from how useful it is for families to those choosing to donate equipment in support.

In January I invited local residents to join me in walking around Custom House and talking about parks, opportunities and ideas. Suggestions ranged from ground painted prompts and information to trampolines and activity classes.

The ethos of Diploma 20 led me to explore what connects people to their surroundings. In January I therefore invited members of the community to walk around Custom House and talk about parks, opportunities and their ideas. Suggestions ranged from ground painted prompts and information about trampolines and public activity classes.

REGENERATION PROGRAMME TIMELINE



CUSTOM HOUSE BOOKSHOP 3 FREEMASONS ROAD

The bookselling industry is a traditional and conservative business, but books are for everyone!

The Custom House Bookshop was founded in 2020 by two residents who have a combined a century of experience living in the area.

As a community interest company, it was created as a social enterprise to actively engage with everyone, but especially isolated individuals and seldom heard communities.

The books on sale, and related events and activities, reflect the youthful and diverse nature of local people as well as the history and heritage of our neighbourhood.

Activities have included the official opening last November, when Councillor Sarah Ruiz cut the ribbon, and a Father

Christmas event where local children each got a present. Crafting and storytelling sessions are held every Saturday morning.

The bookshop also hosted an event that led to local residents voting the change of name of Siemens Brothers Way to Kamal Churchie Way.

Kamal Churchie founded the Coloured Men's Institute in 1926 in response to the racism which the black and Asian communities suffered locally.

Future activities include cultural mapping and street naming projects involving a local primary school to rename the streets on a new housing development to reflect other notable local residents.

NEWHAM TUBE/TRAIN STATIONS

N	O	T	K	C	E	B	A	P	T	K	A	D	H
T	R	O	Y	A	L	V	I	C	T	O	R	I	A
S	O	O	E	S	U	O	H	M	O	T	S	U	C
A	C	N	F	O	R	E	S	T	G	A	T	E	O
N	S	L	O	N	D	O	N	C	I	T	Y	W	S
T	T	O	O	A	E	R	W	N	P	Y	N	S	O
H	A	M	A	H	T	S	A	E	E	G	P	R	M
K	R	A	P	R	O	N	A	M	S	P	N	S	F
E	L	W	O	T	S	I	A	L	P	T	S	L	A
A	A	U	P	T	O	N	P	A	R	K	H	O	S
A	N	N	N	W	O	T	G	N	I	N	N	A	C
P	E	E	S	S	T	R	A	T	F	O	R	D	M
P	R	I	N	C	E	A	L	B	E	R	T	C	T
N	W	O	T	R	E	V	L	I	S	T	S	E	W

- BECKTON
- UPTON PARK
- STRATFORD
- CUSTOM HOUSE
- PRINCE ALBERT
- PLAISTOW
- WEST HAM
- MANOR PARK
- ROYAL VICTORIA
- EAST HAM
- FOREST GATE
- LONDON CITY
- WEST SILVERTOWN
- CANNING TOWN
- STAR LANE

Play this puzzle online at: <https://thewordsearch.com/puzzle/3317837/>

CONTACT

The Regeneration Team
 Tel: 020 3373 3906
 Email: regeneration@newham.gov.uk

DROP IN

Regeneration Hub opening hours:
 10am-4pm Mondays, Tuesdays and Fridays (council officers)
 2pm-6pm Thursdays (NewmanFrancis)