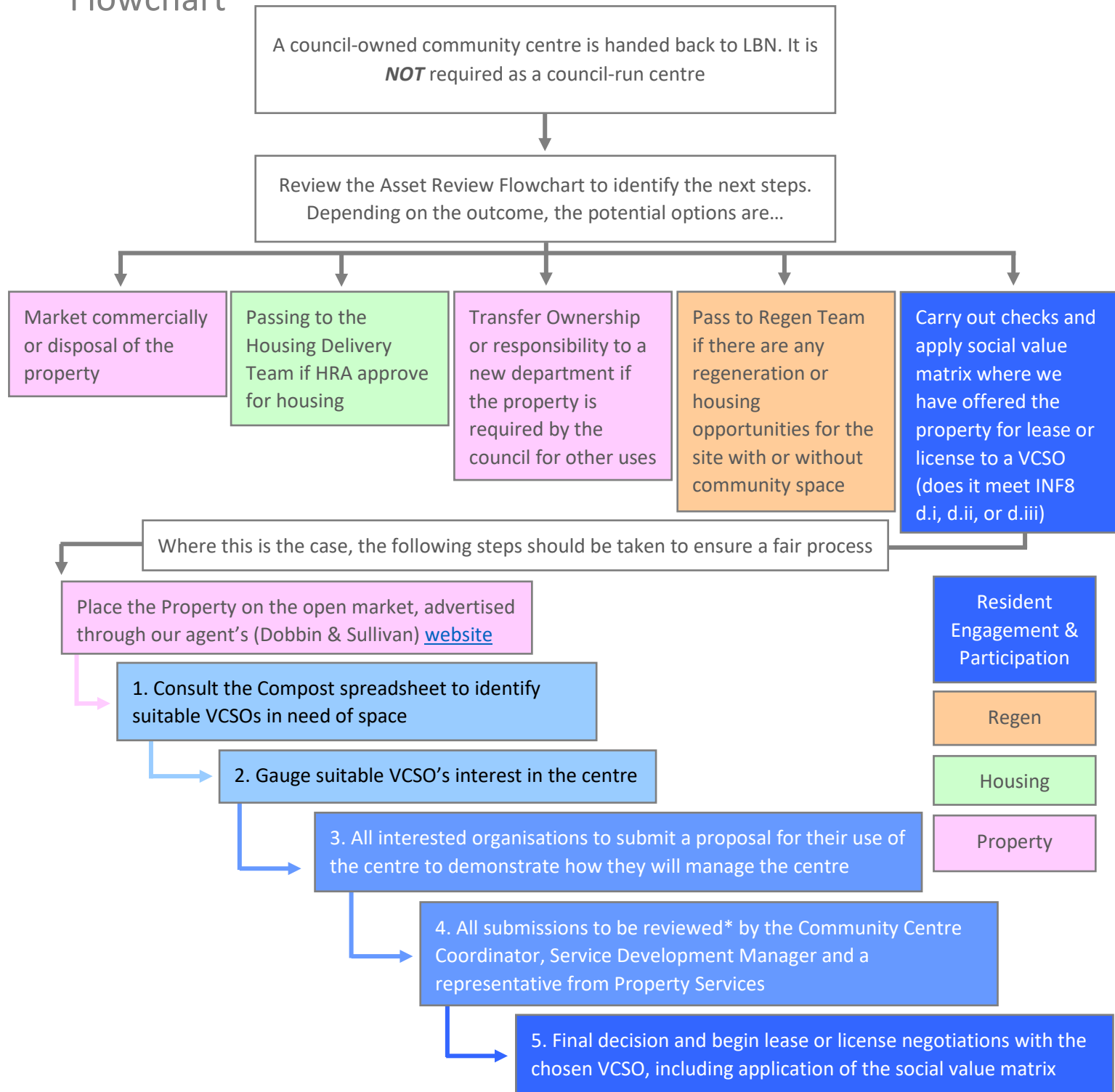


Offering an Empty Council-Run Community Centre

Flowchart



*Newham Council will consider the following three areas when determining the outcome of a review:

- The level of social value an organisation will deliver, through application of a social value matrix,
- The overall content of the business plan,
- The finances of the organisation

Each category will be scored, with the final decision made at a review panel attended by the Community Centre Coordinator, Service Development Manager and a representative from Property Services.