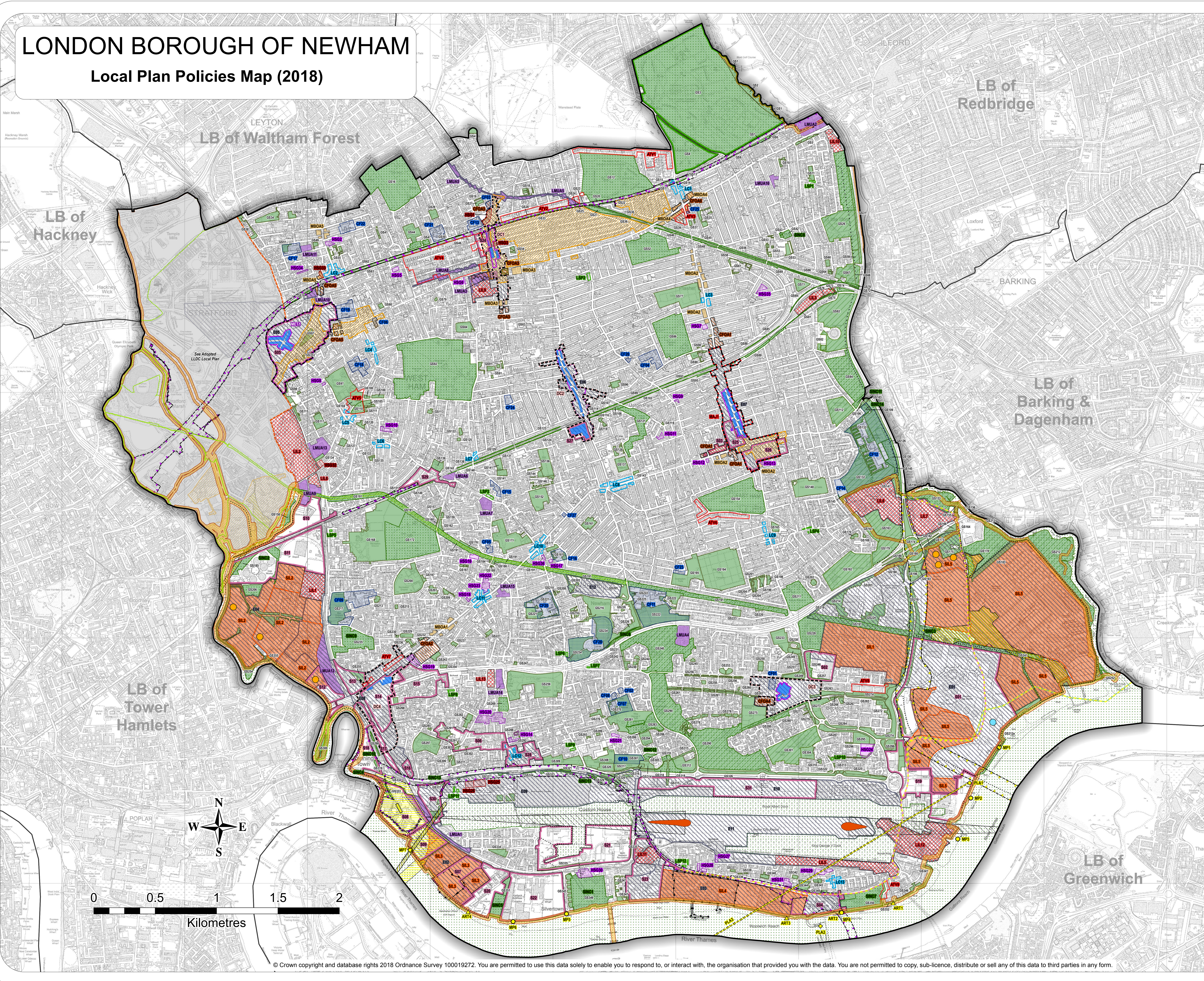


LONDON BOROUGH OF NEWHAM

Local Plan Policies Map (2018)



- Borough Boundary
- London Legacy Development Corporation within Newham
- Lee Valley Regional Park Authority Boundary
- Strategic Site [S1-S6]
- Thames Tideway Tunnels Safeguarding [S5]
- Area of Townscape Value [SP5]
- Conservation Area [SP5]
- Primary Shopping Area [NPPF]
- Primary Shopping Frontage [SP9]
- Employment Hub [J1]
- MBOA Micro Business Opportunity Area [J2]
- Local Industrial Location [J2]
- LMUA Local Mixed Use Area [J2]
- SIL Strategic Industrial Location [J2]
- HSG Residential Allocation [H1]
- HSG Residential-Led Mixed-Use Allocation [H1]
- TE2100 Flood Defence Safeguarding [SC3]
- Crossrail Safeguarding [INF1]
- DLR Dagenham Dock Extension [INF1]
- New DLR Station (Passive Provision) [INF1]
- Barking to Royal Docks Bus Corridor [INF1]
- Recreational Footpath Network [INF1]
- Silvertown Tunnel Safeguarding [INF1]
- Thames Gateway Bridge Safeguarding [INF1]
- Safeguarded Wharf [INF1]
- PLA Becton Radar Sightline [INF1]
- PLA Radar Station [INF1]
- MP Protection of Mooring Points for Riverbus Service [INF1]
- ART Protection of Public Access Points to River Thames [INF1]
- Cable Car Protection Zone [INF1]
- London City Airport Public Safety Zone 10*4* Risk Contour [INF1]
- London City Airport Public Safety Zone [INF1]
- Joint Waste Plan Safeguarded Sites (Schedule 1) [INF3]
- Potential Waste Site (Beckton Riverside) [INF3]
- MET Metropolitan Centre [INF5]
- MAJ Major Centre [INF5]
- DC District Centre [INF5]
- LC Local Centre [INF5]
- LSP Local Shopping Parade [INF5]
- GB Green Belt [INF6]
- MOL Metropolitan Open Land [INF6]
- SINC Site of Importance for Nature Conservation [INF6]
- Green Space [INF6]
- CFOA Community Facility Opportunity Area [INF8]
- Community Facility Allocation [INF8]



Date: 10/12/2018 | Scale: 1:10,000 @ A0