

WE ARE RESPONDING.



NEWHAM'S CLIMATE EMERGENCY ANNUAL REPORT 2021-2022

We are taking action in response to the climate emergency, to meet our carbon neutral targets by 2030; and get to carbon zero by 2050.

CONTENTS

MAYORAL INTRODUCTION	4
NEWHAM'S PATH TO NET ZERO	6
GREEN HOMES FOR A SUSTAINABLE FUTURE	8
GREEN ECONOMY	11
CLIMATE CHANGE AND HEALTH	14
AN ENVIRONMENT FOR ALL	15
PROCUREMENT, ESTATE MANAGEMENT AND PENSIONS	18
TRANSPORT AND AIR QUALITY	19
NEXT STEPS	25

Visit www.newham.gov.uk to find out more information.

MAYORAL INTRODUCTION



Taking action to tackle the climate emergency is integral to building a fairer Newham. As a council, we have been working and playing our part, as part of the necessary global response to this challenge, across all aspects of our work, borough wide, to achieve net zero by 2045.

This work represents action in every council department, working together with people in our borough. I am therefore delighted to present this year's Climate Emergency Annual Report, 2021-2022, which provides a detailed and positive update on that work, and why it is at the centre of our plans for a Fairer Newham and for the future local economy we need. The climate emergency is an unparalleled challenge for everyone, requiring a complete change in the way we live our lives. We have taken huge strides in progressing this work, in particular over the last year, but we have much more to do.

The reality of climate change is already with us, both globally and in our borough. Less than a year ago Newham was affected by flash flooding, at one point forcing Newham Accident and Emergency Hospital to close. These ever-increasing events bring home just how much human-driven climate change is making nature less and less predictable. And whilst reducing our carbon emissions is vital for our climate, it goes hand in hand with improving the air we breathe, to make Newham a healthier, cleaner and greener environment, vital to our health and wellbeing.

And this has never been more urgent. Last year's United Nations Climate Change Conference (COP26), put a worldwide focus on what is needed to avoid the catastrophic temperature rise, above 1.5 degrees. It was also a moment to reassert issues of global climate justice, and the need for wealthy societies,

responsible for the vast share of greenhouse gas emissions to date, to deliver on the promises to support the Global South's transition to resilient, thriving, low pollution societies. There was also a strong imperative for action to be taken far more rapidly, and calls for all countries to look at more ambitious targets to keep within the 1.5 rise. Action, not words, were the key message, if countries are to lock in the halving of emissions within this decade.

We know that cities, and local authorities like ours, play an absolutely vital role in reducing emissions, and that is why I signed up, on behalf of the council, to a more ambitious target for lowering our carbon emissions, by 2030 for our council operations, and 2045 for the borough as a whole. This report sets out in detail our steps towards that, through some key policy areas. These include our investment in improving our homes, to make them energy efficient, to both lower carbon emissions and deal with fuel poverty. Through the new homes we build and transforming our existing stock, this ongoing work has the capacity to make a huge difference. The report sets out how we are shaping our local economy, through the investments we are making in infrastructure, and working with businesses to deliver the training and the green jobs for a just transition. You will read about how we are connecting our work in relation to public health, transforming crucial aspects of our lives for healthier, more sustainable living. The report crucially looks at the steps we are taking to tackle toxic air, encouraging healthier, lower carbon travel, and greening of our neighbourhoods, and the significant progress we have made in those areas. And the report talks about how we have been working with residents, through Citizen Assemblies and other initiatives, so that we are taking forward all of this work with residents.

We know that this will be a very difficult challenge, and one which needs both action from us, and from all of us, but also for a serious national government response, including the financial resources we need to make those transitions. This includes far greater national funding so that we can do what we need to achieve those lower carbon homes, and investing in cheaper, efficient public and sustainable transport. This is essential for local councils like ours to reach our climate zero goals, and we will be strongly calling for the government to do this.

MAYORAL INTRODUCTION

This year, I was proud to be given another mandate as Mayor for a second term, and I stood on a firm promise to step up our action on climate emergency.

Building on what we have done so far, these plans will deepen the ambitions we already have in place. This includes delivering a further 1,500 social rent homes, built to high sustainable standards, and to continue the programme to make our existing homes more sustainable, something vital at a time when so many face fuel poverty.

We will be investing even more money to clean and green our streets and public spaces, to see the sustainable super-local approach which our 15 minute neighbourhoods embody. We will continue to invest to enable better, sustainable transport to help clean up our air, from 1000 Electric Vehicle charging points and 500 new cycle hangers, to expanding our plans for low traffic neighbourhoods and healthy school streets. Healthy air is a human right, and crucial for a healthier, happier borough.

We will see significant further investment in our borough's infrastructure through new green projects with funding for new walking and cycling routes, and with an ambitious vision for Stratford to become the borough's first Green Zone by 2024. This example of how we shape a fairer, greener economy, will provide high quality and sustainable development to create healthy and safe neighbourhoods, and new economic opportunities through jobs and training. I want to see this Green Zone model extended across Newham by May 2026, as part of our net zero plans. And to enable that, we will be developing our first Green Budget.

We will be further developing the Council's Adult and Skills Learning Hubs with those jobs and career opportunities in the green economy, data and technology, science and the creative sectors. Crucially, we will be presenting the Council's first ever Green Budget this coming year which will help us build our response to the Climate Emergency across all aspects of our work in the Council to achieve net zero by 2045.

These are just some of the future plans afoot, together with the work provided in this report, to both deal with the climate emergency, and deliver positive changes to people lives. Our response to the climate emergency must tackle all the challenges facing us a society. I look forward to us working together towards our goals for carbon zero and a greener, healthier and fairer Newham.

Best wishes,



Mayor Rokhsana Fiaz OBE



NEWHAM'S PATH TO NET ZERO

Newham's Annual Climate Emergency Report 2021-22 provides an update on the progress of our Climate Emergency Action Plan, co-ordinated through the Mayor's Climate Emergency Task Force, which was published in July 2020, and following the Climate Emergency declaration first made at Full Council in April 2019. This first declaration in 2019 acknowledged that the issue of climate change was now a Climate Emergency, and if everyone, including local authorities and governments across the world, did not act, humanity would face catastrophic consequences. We therefore committed to taking real and immediate action, to lower and ultimately reach zero in our carbon emissions, and to report progress on this year on year. It provides the next steps towards achieving our ambitious carbon neutral and carbon zero goals. This report also highlights key updates from the Air Quality Action Plan, which can be found in full at the Newham Council website.

As a council we want to make real and genuine progress towards carbon zero, which is measurable. We are not interested in presenting the appearance of tackling climate emergency, and we reject any notions of 'greenwashing', or presenting just the appearance of being eco-friendly. As a council we are about taking action and make real change

One significant action by Newham Council this year was signing up to the UK100 pledge to support the fight against climate change. This pledge commits to a more ambitious

goal for carbon zero, and builds upon the Climate Emergency declaration of carbon neutrality by 2030, building on our original commitment for Carbon Neutral by 2030 and Carbon zero by 2050. UK100 is a network of local government leaders seeking to implement plans for the transition to clean energy that are ambitious, cost effective and take the public and businesses with them.

Newham's carbon reduction pathway:

- Achieving operational carbon zero by 2030
- Reduce emissions by 78 per cent by 2035¹
- Net Zero borough wide emissions by 2045

What this all means:

Carbon Neutral: Carbon neutrality is where the sum of the greenhouse gas emissions (CO₂e) produced is offset by natural carbon sinks and/or carbon credits.²

Net Zero: A reduction in greenhouse gases by at least 100 per cent of 1990 levels.

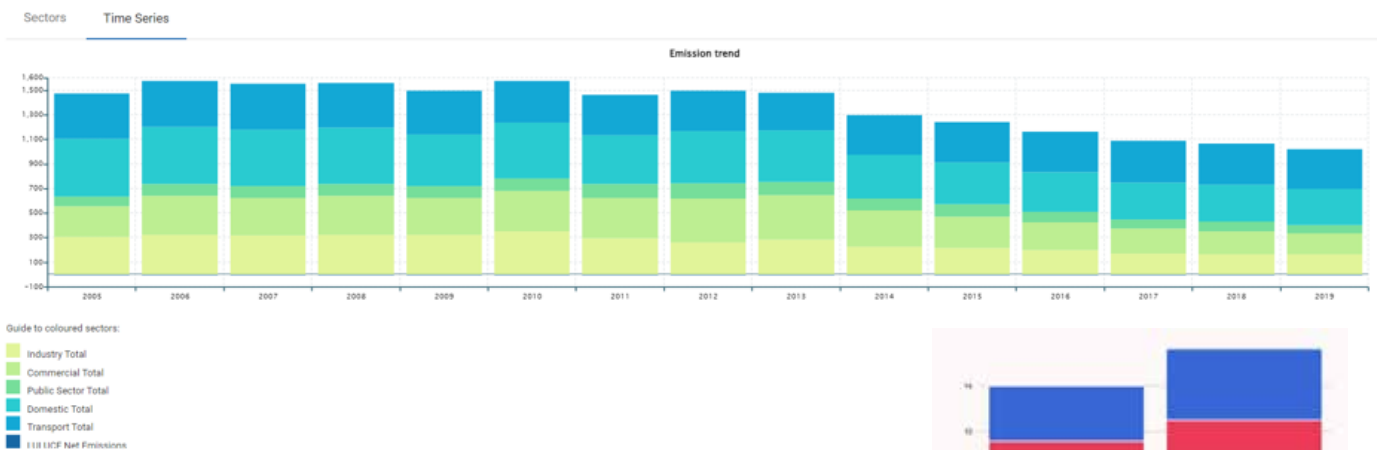
Scope 1, 2 and 3 emissions³

Scope 1: covers direct emissions from owned or controlled sources.

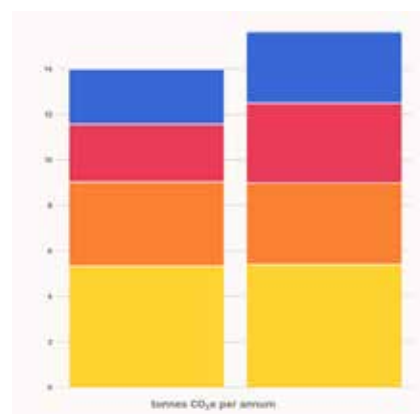
Scope 2: covers indirect emissions from the generation of purchased electricity, steam, heating and cooling consumed by the reporting company.

Scope 3: includes all other indirect emissions that occur in a company's value chain.

Borough Wide CO₂ emissions 2005 - 2019⁴



The graph shows that the average consumption footprint per household in Newham is slightly lower than the national average.



¹A central government targets

²<https://www.carbontrust.com/what-we-do/assurance-and-certification/carbon-neutral-certification#:~:text=A%20carbon%20neutral%20certification%20demonstrates,the%20support%20of%20environmental%20projects.>

³<https://www.carbontrust.com/resources/briefing-what-are-scope-3-emissions>

⁴UK local authority and regional estimates of carbon dioxide emissions: <https://www.gov.uk/government/statistics/uk-local-authority-and-regional-carbon-dioxide-emissions-national-statistics-2005-to-2018>

CLIMATE VIEW

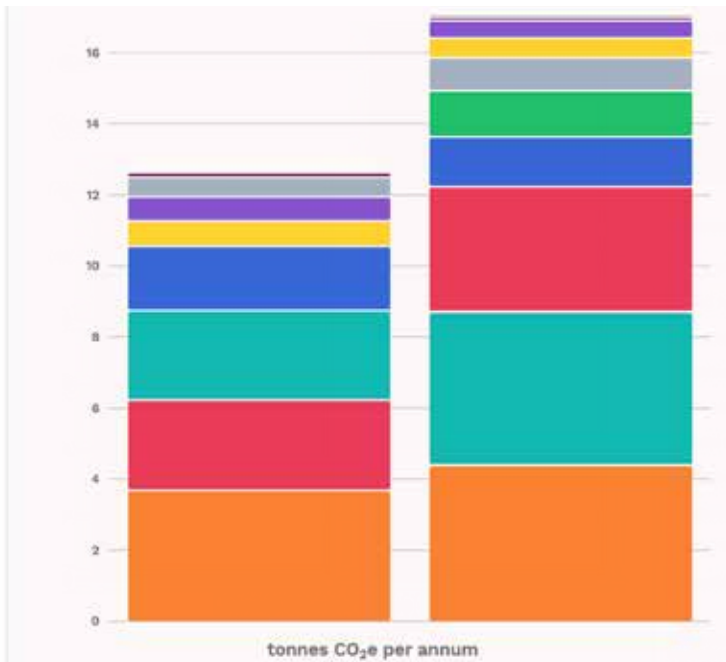
Newham CHANGE

12.7t CO₂e*
per-household territorial footprint (p.a.)

EMISSIONS BREAKDOWN (t CO₂e)

Industrial and commercial	3.71
Housing	2.55
Road Transport	2.53
Aviation	1.81
Shipping	0.72
F-gases	0.68
Waste management	0.55
Other Transport	0.54
Diesel fuelled railways	0.01
Agriculture	0

*CO₂e stands for "carbon dioxide equivalent" and is a standard unit of measurement in carbon accounting. It expresses the impact of a number of different gases collectively as a common unit.



Great Britain CHANGE

17.1t CO₂e*
per-household territorial footprint (p.a.)

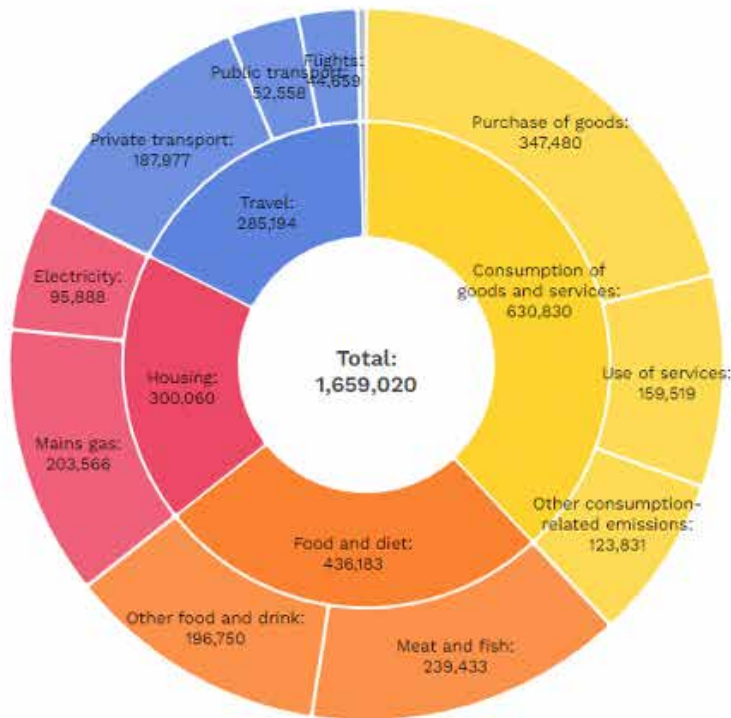
EMISSIONS BREAKDOWN (t CO₂e)

Industrial and commercial	4.42
Road Transport	4.33
Housing	3.52
Aviation	1.41
Agriculture	1.3
Waste management	0.93
Shipping	0.56
F-gases	0.49
Other Transport	0.08
Diesel fuelled railways	0.07

*CO₂e stands for "carbon dioxide equivalent" and is a standard unit of measurement in carbon accounting. It expresses the impact of a number of different gases collectively as a common unit.

The graph below shows the annual carbon emissions (measured in tonnes CO₂e) emitted as a result of the different activities that residents within Newham engage in.

- Housing**
Emissions resulting from residents' use of energy in their homes.
- Food and diet**
Emissions resulting from the consumption of food and drink products by residents.
- Travel**
Emissions resulting from the transport choices & behaviours of residents.
- Waste**
Emissions resulting from the management of waste generated by residents.
- Consumption of goods and services**
Emissions resulting from the purchase of goods and the use of services by residents.



Goods – all household goods (not food), including homeware, toiletries, medicines, furnishings, electronic goods, appliances, & large items such as cars.

Services – use of services, including the maintenance and repair of home, vehicles and other equipment, banking and insurance, medical services, treatments, education costs, communications (e.g. TV, internet and phone contracts), and other fees and subscriptions.

Other – leisure, entertainment, sporting or social activities.

GREEN HOMES FOR A SUSTAINABLE FUTURE

The reduction in Borough emissions as a whole have been encouraging. We are witnessing a sustained decline in carbon emissions, and this reflects the efforts of Newham Council and our Climate Emergency Action Plan. Particularly encouraging is that emissions per capita have fallen by half, from 5.8 tonnes per resident in 2005 to 2.9 tonnes in 2019. This represents an impressive achievement, and shows we are on an encouraging trajectory.

Whilst we know the trajectory of this decline isn't currently sufficient to reach our ambitious climate change goals, this gives us a good indication of what we need to do to meet these targets:

1. To be even more ambitious with our aims and our action plan
2. To support and motivate our residents to reduce their own emissions
3. To press for sufficient resource from central Government to decarbonise the borough

GREEN HOMES FOR A SUSTAINABLE FUTURE

A quarter of Newham's CO₂ emissions come from domestic energy use. Reducing these carbon emissions represents a substantial challenge for the borough and our residents. However, it is also one of our most exciting opportunities which, if done correctly, can help support a green industrial revolution in Newham.

The pressing need for green homes goes hand in hand with the need to improve our homes, and our own housing stock. The challenge we face is how to simultaneously ensure we meet our house building targets (the highest in London), retrofit to improve our existing stock, support retrofitting of privately owned stock, and address the scourge of homelessness and fuel poverty. This challenge will bring millions of pounds of investment, providing opportunities for jobs, skills development for young residents and those leaving carbon intensive jobs.

We have a mission to tackle fuel poverty and inequality through the adaptation of new technologies, efficient energy sources and the creation of more green economy and low carbon jobs in the borough that local people can access. Through our Fuel Poverty Strategy, people living in the coldest, least efficient properties now have the opportunity to transform their homes through energy efficiency retrofits.

Our Fuel Poverty Strategy sets out a massive £96m three-year council homes maintenance programme, starting with a comprehensive stock condition survey, to repair and refurbish homes with the highest levels of safety and sustainability principals applied.⁵

Green Homes Grant Scheme

One of key achievements of the past year has been our work with the Department for Business, Energy and Industrial Strategy Green Homes Grant Scheme. Under the Scheme, residents in Newham have been able to receive extra support, for up to £10,000 to cover the installation of measures including low carbon heating systems, insulation, and smart heating controls. We received a £1.4m share of the £26m scheme – the largest of all 13 participating London boroughs. This presents a unique opportunity to fight fuel poverty and the climate crisis at the same time. This scheme provides the added bonus of helping to tackle one of the most urgent challenges in the global climate emergency by supporting clean, green jobs and reducing energy consumption.

Retrofit – greener, cheaper, better homes

Retrofitting existing homes to make them more energy efficient, is one of the biggest challenges facing the country. The council's Housing Revenue Account (HRA) Business Plan has allocated up to £184m overall for investment in our existing council stock over the next three years, and energy-efficient retrofit will be a key part of this investment.⁶ Beyond this additional funding, longer-term budgets will increase substantially and funding the retrofit of existing stock is a cornerstone of our Housing Revenue Business planning. Our planning will be updated alongside our decarbonisation roadmap, which is being informed by advanced data modelling and analysis of our council homes to identify priorities for investment and propose efficient options for delivery of retrofit improvements.

We have employed a Retrofit Co-Ordinator for research, feasibility and potential grant funding who will be working closely with the wider social housing sector. Research has shown that investment in retrofit creates 2.8 times as many jobs as investment in unsustainable industries.⁷ We must ensure that opportunities to this job creation are unlocked, ensuring our efforts link to a green new deal and our Community Wealth Building Ambitions.

⁵ <https://www.newham.gov.uk/public-health-safety/energy>

⁶ <https://www.newham.gov.uk/news/article/797/mayor-fiaz-hails-opportunities-for-inclusive-growth-and-need-for-action-on-skills-at-the-launch-of-the-local-london-green-jobs-and-skills-partnership>

⁷ https://www.ituc-csi.org/IMG/pdf/the_green_jobs_advantage_-_wri_nce_and_ituc_working_paper.pdf

GREEN HOMES FOR A SUSTAINABLE FUTURE

Retrofit is a key challenge for our net-zero ambitions. We estimate that around 29% of borough wide emissions come from housing, and around 44% of our own operational emissions came from our council owned housing stock. LBN operates around 24,000 social rent and leasehold properties. We will therefore be robustly focusing our resources on retrofit. To ensure we can sustain such an ambitious programme we are bidding on external funding opportunities to supplement our own resources.

Ultimately, we cannot meet our net-zero ambitions without sufficient central government funding and commitment to retrofitting as a means of tackling both the climate emergency and the cost-of-living crisis. We will campaign for proper funding to effectively deal with the Climate Emergency, and in particular for the funding needed to bring all existing Council owned homes up to a high standard of energy efficiency.

Populo Living:¹⁰

Populo Living is Newham Council's wholly owned housing company. Populo is tasked by the Mayor and council with tackling the serious shortage of genuinely affordable homes in Newham, and with the goal of tackling climate emergency a key part of that. They are onsite now in 12 different locations and have taken on the role of development managers for the Carpenters Estate.

Following the outcome of the residents' ballot which voted in favour, the Carpenters Estate will undergo one of the most ambitious, largest, and greenest, estate regeneration programmes in London, delivering more than 2,000 high quality and sustainable homes, more than a thousand of which will be available at social rent. Voter turnout was 66.5% with 73% voting yes, illustrating how Newham Council combines

people power, regeneration, and our solution to the climate emergency. As part of the council's climate emergency response, 314 existing homes on the estate will be restored to the highest green economy standards including the refurbishment of James Riley Point starting this year, in 2022.

As a key part of the council's housing delivery approach, Populo Living has a clear commitment to achieve Net-Zero. They take a whole life carbon approach to reducing their carbon impact across the borough (looking at energy use, and also embodied carbon in materials) throughout the lifecycle of their project. Their approach can be summarised as follows:

Retrofit: Their approach isn't just about new buildings but the redesign and retrofit of all homes which have fossil fuel reliance, or don't meet modern energy efficiency standards. This retrofit agenda is key to achieving their vision, as they retrofit existing homes, they will inevitably reduce the amount of materials used, and therefore site waste and deliveries. This is why Populo proposed to refurbish 2 major towers as part of the Carpenters Estate redevelopment rather than building something completely new.

Energy Efficiency: To improve health, and reduce fuel poverty, in line with the council's approach, Populo will seek to achieve operational net zero carbon for all new build homes by 2025, as defined by the UK Green Building Council (UKGBC). They take a PassivHaus approach to focus on fabric improvements and avoid the need for future retrofit works.



⁸ <https://www.gov.uk/government/statistics/uk-local-authority-and-regional-carbon-dioxide-emissions-national-statistics-2005-to-2018>

⁹ Climate View

¹⁰ <https://www.newham.gov.uk/news/article/765/brighter-future-ahead-for-carpenters-estate-as-landslide-73-yes-vote-gives-green-light-to-new-homes>

GREEN HOMES FOR A SUSTAINABLE FUTURE

Post Occupancy Evaluation: Projects will be designed to aid smart operation, and the collection of data throughout their lifetimes. This information will be used to continually review and improve their strategies.

Materials and Waste: Populo will measure embodied carbon and a range of other metrics to choose the best materials. They will require all larger sites to measure waste volumes and set increasingly tough targets with the aim of no waste sent to landfill.

Healthy Transport: Supporting Newham’s “15-minute Neighbourhoods” initiative. Secure cycle parking and electric vehicle charging will be provided on all projects. Homes in areas with better access to public transport will be targeted for more dense developments and higher provision of sustainable transport initiatives.

Offsetting: We will reinvest carbon offset funds within Newham wherever possible, to help deliver energy efficiency and new technologies, as well as new green spaces which can sequester carbon as well as providing social value to the local community.

Affordable Homes for Newham Programme

Within the council, the Affordable Home for Newham programme delivers council social rent housing, and has PassivHaus as a principle within this.

Populo Living’s approach to achieve Net Zero Carbon can be summarised in five clear milestones:

1. Creating a whole life decarbonisation strategy across all operations in 2022.
2. Have a clear strategy for eliminating fossil-fuel use and using 100% renewable electricity by 2030.
3. Using “smart” systems to monitor and optimise efficiency in all Populo Living buildings by 2030.
4. Require their supply chain partners to deliver zero whole life carbon on site by 2030.
5. Do all they can to minimise the amount of carbon they need to offset by 2030.

The Whole Life carbon project cycle is the framework the council will use in the development of the decarbonisation strategy, which is summarised in the diagram below.



GREEN ECONOMY:

Last year's report laid out our plans to accelerate the development of the green economy. When this report was published, we were emerging from a long a difficult period of lockdown due to the Covid-19 pandemic. We had pledged that we would do things differently. In our Towards a Better Newham strategy, we acknowledged the challenges facing the borough. Our commitments, then as now, have been to redress the deep inequalities impacting Newham. With the cautious steps out of the Covid pandemic, we have begun this process in earnest, and taken significant strides in building a greener, fairer economy.

The green economy has already began its meteoric rise. Across the Local London area of eight East London Boroughs, the green economy accounted for around £5bn of activity in 2020/21. By 2050, when we pledge to have achieved zero carbon emissions, the Local London area is expected to have 110,000 green jobs, a threefold increase from today's figure. At Newham, we have been at the forefront of unlocking the green industrial revolution. Since the beginning of the Covid-19 pandemic, we have delivered over £187m in business rates relief to over 3,000 businesses and £99m in grant funding to over 5,000 businesses. We also established the Royal Docks Enterprise Zone (the only one in London) as a hub for innovative and green enterprise.

This year we have developed many exciting cutting-edge projects that push our green economy even further, establishing London Borough of Newham as leader in the field.

Successful bids

One of the transformative achievements for Newham of the past few years has been our successful bid to the Levelling-Up Fund, based on the work we did in response to the pandemic in terms of recovery. Our two successful Levelling Up bids were awarded nearly £40 million – the highest award for any London borough out of the £65m allocated to London. These bids were designed specifically to support and unleash the burgeoning green economy in Newham. They will support green infrastructure, good quality jobs, and more sustainable living.

Bid One: 15 Minute Neighbourhoods

Our vision for 15-minute neighbourhoods will facilitate more sustainable and equitable communities across the borough. The bid focuses on activation and revitalisation of council assets to help diversify our local economy and offer. We will also create an enhanced public realm that supports positive experiences when visiting local high streets, promote sustainable town centres and increase perceptions of safety. Interventions will include redesign of two key junctions, footway improvements, creative public space enhancements, planting and pocket parks, transformation of alleyways and improvement to open spaces. And, as the Mayor and council have made clear the priority of improving our public spaces and dealing with issues such as the scourge of fly tipping and environmental crime, this investment will prove vital in transforming our neighbourhoods for the better, and sustainably.

A good example of how this project supports our climate emergency work is car ownership. Car ownership is low among Newham residents, however data shows that traffic and air quality along Romford Road is harmful to human health. In combination with our second bid, managing traffic and enabling active travel along and around Romford Road will help improve air quality and support residents' everyday travel in the north of the borough.



GREEN ECONOMY:

To achieve that this project will see a Strategic Active Travel Corridor along the Romford Road, supporting sustainable travel and providing connections between high streets. Healthy School Streets and Low Traffic Neighbourhoods will be implemented to support local journeys. This bid also links closely to the work done by our permanent Citizens' Assembly which looked at 15 Minute Neighbourhoods and which is covered later in this report and is a strong example of how the council has worked with residents on this issue.

Bid Two: Connection to Opportunities

This bid is divided into three projects, all of which support our climate emergency agenda.

Project 1 - East Docks Eco will deliver:

- Improved walking and cycling routes, connecting isolated communities to the Royal Docks Green Enterprise Testbed.
- New community space providing a network of 'Engine Rooms' targeting access to green jobs, enterprise and innovation.

Project 2 - Canning Town Custom House Heritage and Creative Enterprise will deliver:

- Refurbished culture, heritage and learning space, bringing a Grade II listed building on the high street back into use.
- Refurbished shop units, supporting the local town centre economy and building community resilience.

Project 3 – Leaway Link will deliver:

- A new bridge over the River Lea that will connect Newham communities to major employment hubs and support development of over 40,000 new homes and more than 280,000 sqm of commercial space.
- Improved walking and cycling route leading to the bridge.

Community Renewal Fund

Another key achievement was our successful bid for over £500,000 of funding from the Greater London Authority (GLA) to develop two key projects supporting Green Economic opportunities in the borough. The award came from the government's UK Community Renewal Fund (UKCRF) following a successful bid by the Council.

The projects will enable feasibility studies to develop work on material re-use in the construction industry at scale across London and beyond. The feasibility study will explore the scale of the opportunity, looking at how it will develop including potential sites, partners, and networks to grow the project. The successful award means plans can be progressed to create affordable workspaces, to attract and support green industries in the borough. This study will do the preparatory work necessary to look at how it can develop and unlock further investment into skills and business support.

The successful bid focused on the potential of the Royal Docks emergence as a 'beacon of green innovation' and to establish North Woolwich and Beckton, areas close to the Royal Docks Enterprise Zone, as destinations for green businesses.



GREEN ECONOMY:

Newham Sparks

Newham Sparks is our declaration to become a public sector data leader in local government by improving public service delivery through use of data and technology promoting responsible data use, with trust and transparency and for the public good. Newham Sparks links to ambitions to make Britain the world's leading data destination, supporting innovation to drive growth that is green. Consequently, following its launch in 2021 we have invited local residents, businesses, innovators and investors to unleash the capability of Newham and spark its position as the 'go-to' centre of the growing data and digital sector in London. This call for action is motivating a broad range of businesses, community organisations, partners, innovators and investors to come forward to work with us on a series of 'challenge questions' based on key priority areas for Newham, one of which is climate change. Within this call we are looking at the following questions:

- How do we use data and digital to tackle climate change?
- How do different sectors work together to tackle climate change in Newham?
- How do we ensure that growth in the data and digital sectors is as green as possible?

Newham is already transforming how we work by maximising our use of data and technology for the public good to achieve our inclusive economy and Towards a Better Newham ambitions, including:

- The use of LED lighting
- Retrofitting housing with Smart devices
- Managing traffic across our Low Traffic Neighbourhoods

Stratford Business Improvement District

Newham Council proudly supports the Stratford Business Improvement District. We are collaborating to ensure we collectively reach our carbon emissions targets. One of the exciting projects has been to commission a cargo bike audit for members. Our sustainable transport team is also working with the Business Improvement District to apply for funding from the London Legacy Development Corporation (the planning authority responsible for the Olympic Park) to apply for a wider programme to assess local business needs and encouraging the use of sustainable transport for moving and delivering goods. This will support projects of up to £30k, making a substantial difference to the green ambitions of our business community.

Covid Grants

As part of our grant giving mechanisms, we have been supporting businesses to transition to more environmentally sustainable practices. The Carpenters and Docklands Community Centre were awarded a large grant from Newham with the aim of expanding their food bank provision from two to three days a week and supporting their subsidised Playcare provision for working parents in Newham. Through our support they were able to purchase an electric vehicle,

allowing them to carry out their operations largely emission free.

Grants for Mini Cab and Courier Drivers

The Council made a strategic decision to only give ARG grants to minicab drivers and courier drivers who operated from a hybrid or electric vehicle. Through this approach we have provided £862,000 to 362 mini cab taxis. This approach is supporting the transition away from petrol and diesel engines, to sustainable transport. This will not only help support our goals to reach net zero borough wide emissions by 2045, but also help improve our air quality and protect the health of our residents.

Atlantic Pacific

Atlantic Pacific International Rescue is an organisation committed to stop people drowning. They have been successful in securing one of our large grants, receiving nearly £190,000 through LBN's grant programme. Global drowning, is the third largest cause of death in children globally and will only be made worse by climate change. Through their grant money they have been able to build a learning space to help support and deliver their outreach, educational and training programmes.

As part of their educational outreach programme in the borough they will be working with primary and secondary schools to inform our young people about the causes of drowning including the role climate change is playing with increasing sea levels and adverse and extreme weather incidences globally.

Atlantic Pacific will also introduce their Precious Plastic Project to the borough in 2023, enabling young people to both learn about the impact of plastics on our oceans, but also recycle used plastic into new products for a longer life cycle and less chance of entering our environment.

Skills

Newham is part of the successful bid to the Mayor of London to establish a Green and Digital Mayoral Academy Hub to support the development of training in green and digital skills. The hub will prioritise a range of green and digital sub-sectors that are facing skills shortages including internal/external insulation technologies, ground source heat pumps, electric vehicle charging installation, computer aided design and building information modelling.

We have been working towards the development of courses to enable local people to develop their skills and secure jobs in the green technology sector. For example, we have been working with Hobbs Academy to provide free courses to Newham residents on digital visualisation, 3D printing, and Architectural, and Product Model Making, with a focus on sustainable methods of construction.

CLIMATE CHANGE AND HEALTH:

The Covid-19 pandemic has shown us all how intertwined public health and the climate emergency are. Uncontrolled urbanisation, expansion of industrial farming, and energy exploitation has put humanity and increased risk of exposure to deadly pathogens. The outbreak of Covid-19 has been widely seen to be a consequence of climate change.

However, the relationship between public health and climate goes far beyond Covid-19. From flooding, to heatwaves, to air pollution, to healthy eating, climate change and the path to sustainability is a public health issue. Our 50 Steps to a Healthier Newham Public Health Strategy means a greener healthier Newham. We noted last year that tackling the climate emergency and health inequalities were inherently linked.

Food

Food accounts for 35% of all UK emissions,¹¹ moreover meat-heavy diets produce almost twice as much CO₂ as diets based primarily on plant-based food. Food insecurity is also a pressing issue, exacerbated during the Covid pandemic, due to lost jobs and incomes, and the current rising cost of living. Our plan for more sustainable food goes hand in hand with our efforts to tackle food poverty and insecurity.



London Borough of Newham is proud to be the largest local authority user of surplus food in the UK. In the last year, the Newham Food Alliance has saved over £5 million worth of food, which amounts to 1,820 tonnes of food, or 6,900,000 tonnes of carbon emissions.

Eat for free:

Our flagship Eat for Free programme provides universal Free School Meals to all nursery and primary school children. This programme saves families £500 per child while providing up to 14,000 children a healthy and nutritious meal every school day. Meal uptake at Key Stage 2 (children usually aged between 7 and 11) rises from 55% to 90% due to the scheme. By providing our young people with healthy sustainably food, we are reducing our carbon emissions.

It is a great example of how tackling the climate emergency is wrapped inherently with social justice and public health. We are progressing this work by developing programmes with schools to ensure climate literacy for our young people, so that they understand the impact of high carbon diets on the planet and how to eat a more sustainable and healthier diet.

We are Food Growing:

Newham has been awarded a £30,000 grant from the climate change focused Net Zero Innovation Programme by the LGA to create a food growing toolkit over the next 6 months and see a handful of pilot sites for food growing spaces on primary school grounds.

The 'We are Food Growing' toolkit was co-produced with schools and support from experts at University College London and will also see pilot gardens developed in Newham schools. The Project is designed to be scalable within schools and for the toolkit to then be adaptable across other settings.



¹¹ <https://wrap.org.uk/resources/report/uk-food-system-ghg-emissions>

AN ENVIRONMENT FOR ALL:

This year was perhaps our most ambitious yet for improving our green spaces and ensuring there is a beautiful, accessible and green environment for all. Newham has one of the lowest levels of tree coverage in the country, something we are committed to change, and an aspiration that we know our residents share.

Parks

In last year's annual report, we reflected on the importance of parks not only for the environment, but for our collectively wellbeing. The Covid pandemic has shown how crucial parks and green spaces were for mental and physical wellbeing during lockdown. Good quality green spaces are also vital to tackling health inequalities. Understanding these priorities has focused our efforts, and our successes are already being seen. One of the key outputs of the Council this year has been our Citizens' Assembly on greening the borough. However, we have achieved much more beyond this to enhance our green spaces and the role of nature in the borough.

Newham Council's improvements to its parks have been recognised in the prestigious 'Good Parks for London 2021' report, compiled by Parks for London. The report assessed London boroughs' parks services from April 2020 to March 2021 against the ten Good Parks criteria. We have jumped an impressive ten places in the league table within two years of moving the maintenance of the borough's parks in-house. In 2021 Newham leapt seven places in ranking and gained the rating of 'significant improvement.' Newham achieved the highest tier rating in the categories of 'Public Satisfaction,' 'Events,' and 'Health, Fitness and Wellbeing.' This achievement would not have been possible without having brought these services back in-house, and staff back within the council.



AN ENVIRONMENT FOR ALL:

Beckton Parks Masterplan – Building a Greener Newham

Another exciting project is our Beckton Parks Masterplan. This is about co-designing a sustainable future for our green spaces. Here Newham Council is working with residents and community stakeholders to create a future vision for the area. The area covers two council wards: Beckton and Custom House. It includes the largest amount of local authority managed green space in the borough and a variety of leisure and community facilities situated within Beckton District Park (North and South), New Beckton Park, Beckton Corridor, Newham City Farm Site and King George V Park. This is putting people at the heart of our green spaces.



Tree planting

The council has been working to increase the number of trees in the borough. In our annual report last year, we proudly illustrated our achievements on increasing tree cover. This year has been another great year for tree planting in Newham. We received a £297,000 grant from the Forestry Commission to plant over 400 trees and hedgerows. But this wasn't all, working with Trees for Cities, the Council saw 9,000 saplings planted in Beckton in 2019 and a further 1,500 saplings planted in Little Ilford in 2021. This contributes towards the target to increase London's tree canopy by 10 per cent by 2050. Together with the GLA we have planted 712 trees in the Royal Docks area, 313 in wards with a low levels of tree canopy cover, and a further 288 trees planted on our highways and residential streets.

These initiatives, as with our greening the borough citizens' assembly and our 15-minute neighbourhood approach, demonstrate how Newham Council is transforming the physical landscape so that the urban environment and nature co-exist sustainably, for the benefit of all. Tree planting also improves air quality in the borough, supporting our five-year Air Quality Action Plan which seeks to reduce pollution in and around schools, and extend school audits; improve walking and cycling infrastructure and support regular car free days and temporary road closures in high footfall areas.

Treescaping

Working in partnership with Groundwork, we have successfully bided for the DEFRA Local Authority Treescaping fund. This is aimed at establishing more trees in riverbanks, hedgerows, parklands, urban areas, beside roads and footpaths, in copses and shelterbelts, including neglected, disused and vacant community spaces.

Recycling

We have invested an extra £6.6 million in recycling and extended it to all Council owned flats. We have rolled-out recycling to all Council owned homes in blocks across the borough and extending the range of materials that can be recycled to the most ever provided in Newham.

Fly tipping action – reducing waste and supporting a greener newham

Tackling the scourge of fly tipping and those who persist in dumping rubbish and bulky waste on our streets and in our public spaces continues to be a top priority for the Mayor and Council. Whilst there has been important progress and increased investment, to make our streets cleaner, greener and safer, there remains more to be done. This is an issue which matters to residents, and it is an important component of our sustainable climate goals. Newham's work on fly tipping has already had a positive effect, and been nominated by two separate prestigious awards programmes. Our 'Better Streets' project to tackle fly-tipping has been shortlisted in the Best Community and Neighbourhood Initiative category at the Association for Public Sector Excellence (APSE) Awards, 2021. In July, the project, was also shortlisted for a Local Government Chronicle Award for Environmental Services.

Newham London

CARE ABOUT NEWHAM?

DON'T DUMP RUBBISH

Dumping waste on the street is **disgusting**, **disrespectful** and **ILLEGAL**

We're cracking down on illegal dumping. Last year we issued over £100,000 worth of fines to people who dumped waste.

Report dumped rubbish at love.newham.gov.uk

WE ARE NEWHAM.
WE ARE RESPECTFUL.

People at the Heart of Everything We Do

AN ENVIRONMENT FOR ALL:



Our 'Better Streets' project was delivered in partnership with Keep Britain Tidy, who provided research into the behaviours associated with domestic fly-tipping. Residents from across the borough joined officers to hear about the research and co-design targeted activities that included on-street activity, alongside community and school engagement. The resident-designed activities then took place over a 2-year trial period at hotspot locations across the borough, reducing overall levels of fly-tipping by over 70%.

The activities designed by residents included:

- **Empowering Children in Schools:** This pilot intervention was designed to educate young people about fly-tipping, its impacts and the positive things that can be done to keep their environment clean, with homework tasks in between sessions so the message was taken back to parents. Some 79% of students reported that they now know 'a lot' about why fly-tipping is a problem
- **Love Your Ward Weekends:** saw multiple estates "beautified" through resident created murals and planters. Over a tonne of bulky waste was collected via the events
- **No Waste Left on Streets:** This tested a 'no bags on street' policy in one road of high footfall. Residents and businesses were given bespoke waste storage facilities. These waste storage containers had signs to discourage fly-tipping around them and promote that they are not for broader public use. There was an overall reduction of 24% in rates of fly-tipping compared to a 238% increase at the control site
- **Crime Scene Investigation Tape:** In this intervention an identified fly-tip in the trial area was wrapped in CSI Tape, highlighted further with a large colour-coded sticker to identify the date. The fly-tip was then left in place for several days. During this time the enforcement team investigated the fly-tip and at the end of the period the fly-tip was cleared.

The aim of this initiative was to highlight that fly-tipping is illegal by providing a feedback loop to the fly-tipper and other passers-by to drive behaviour change. This pilot resulted in a 73% reduction of dumped rubbish at one site, and 55% reduction at another, with over half of residents reporting they had noticed the intervention

- **Chalk Based Messaging:** Chalk paint stencils that highlight the cost of removing fly tips were stencilled on locations from which fly-tips had been removed. The aim of the chalk paint stencils intervention was to drive behaviour change by highlighting that fly-tips don't simply just disappear but have lasting impacts on the community. This approach led a 67% drop in fly-tipping incidents.
- The crime scene tape and chalk messaging were the most successful and these tactics are now being rolled out at the 12 most fly-tipped spots in the borough every 6 weeks. Fly-tipping has dropped at two thirds of sites, with fly-tipping incidents dropping by nearly half on average.

Street cleansing brought in house

Our approach to the climate emergency has been to tackle problems head on. This means ensuring we are in control of our own operations as opposed to having services outsourced. With this priority in mind, we have taken our street and estate cleansing services back in house. The new arrangements allow for flexibility by the council dealing with one cleansing organisation within the council's Public Realm service rather than three separate organisations with separate tiers of management and back-office functions. It will allow us to look at how we manage our streets, our cleaning regimes and what changes we can make to improve the service residents see on the streets. It is also another opportunity to look at how we manage our fleet in the future to build on our greening the fleet initiatives. We have estimated the decision generates potential savings of at least £150,000 and is built into the council's 2021/22 Medium Term Financial Strategy.

PROCUREMENT, ESTATE MANAGEMENT AND PENSIONS

Public sector decarbonisation

Last year we proudly reported our successful bid for a £2.7m grant through the Public Sector Decarbonisation Scheme. We have been able to make significant progress on this work, bringing us closer as an organisation to decarbonisation. These works include installation of new solar panels and more efficient LED lighting solutions. We will also replace our water source and ground source heat pump with an air source heat pump. This is estimated to deliver 70% savings in gas consumption, financial savings of £220,000 from the financial year 2022/23 and approximate savings of 320 tonnes of carbon per year. This work is expected to be completed this year the Council significantly forward in meeting our decarbonisation objectives. We have been using 100% green electricity for all corporate sites including Newham Dockside from April 2021 onwards. Further, we are also in the process of installing Solar PV over the roof of Newham Dockside which will be completed by September 2022.

Pensions

At Newham, we understand that tackling the climate crisis means using all means available to us to make a difference. With this in mind, we made the key decision to invest £520m of our pension fund in companies across the globe that are well run, socially responsible and active at fighting climate change. This action aims to align the investments with radically reducing the world's carbon emissions to help prevent a



catastrophic rise in the Earth's temperature over 2°C, whilst delivering the strong and stable returns desired by the Newham Pension Fund.

Using this fund will see the Newham Pension Fund substantially reduce its carbon footprint whilst helping promote environmental and social benefits and good governance. The new investment avoids investment in tobacco, oil and gas, coal and controversial weapon systems. Through other initiatives, we will ensure that over £200m of other assets are invested in a socially aware manner.

Our efforts here have been independently recognised as cutting edge. Newham Council's Pension Fund has been shortlisted for best climate change strategy in the Local Authority Pension Fund, Investment Awards 2021.



TRANSPORT AND AIR QUALITY:

At Newham, we understand that climate change isn't simply about increasing global temperatures. Climate change is intersectional, impacting on public health and social justice. Nowhere is this clearer to the residents of Newham than with air quality. One in seven of Newham's population are exposed to levels of Nitrogen dioxide (NO₂) in our air that is above the UK limit value for human health. On average, Newham residents are also exposed to a level of airborne particulate matter (PM_{2.5}) that is 35% greater than the World Health Organisation guidelines. Poor air quality in the borough kills 96 residents every year. To protect and improve human health and the environment, improving air quality in the borough has become our primary focus.

Air Quality Update:

One of the most effective things we as a Council can do is to effectively monitor air quality and communicate this to our residents. We currently deploy one of the largest networks of air quality monitors in the country, which is crucial in understanding emissions concentrations. Having this data helps us to make decisions and employ technology, innovative and creative solutions to clean up dirty air in the borough through initiatives and projects in public health, transport, industry, planning and development. This network, which we are expanding each year consists of:

Automatic monitoring stations: our two automatic stations check the air quality all year round. They check for monitor sulphur dioxide, nitrous oxide, ozone, fine particles and carbon monoxide.

Manually operated nitrogen dioxide diffusion tubes: a tube is placed outside each school and additional 16 sites which check nitrogen dioxide.

Checks on dust: we have five sites which record the amount and type of dust in the air. And we also use a hand-held device for spot checks on the amount of dust

This year, funding has been found to install a new real time air quality monitor at East Ham Town Hall to Measure PM_{2.5} and NO₂. The monitor will be installed in 2022. We have also installed a network of 35 low-cost monitors have been installed throughout the borough. The data has already been put to use in justifying traffic reduction schemes such as the Browning Bridge Closure and Heathy School Streets. All of this is helping us provide real time information to our residents.

Sustainable Local Transport Plan

Transport based emissions account for approximately 32% of all borough-wide emissions, as well as being a main driver of air pollution. It is clear that the way we move around needs to drastically change. Whilst very important to encourage the switch to electric over petrol and diesel, green transport and travel cannot simply be a case of more electric vehicles, but a fundamental cultural change, root and branch. We all need to think about how we travel, moving from cars to foot and bike, and public transport, as well as changing our infrastructure to fit.

In November 2021, we approved a local transport plan to reduce air pollution in neighbourhoods and around schools, enable and encourage more trips by sustainable transport, and help improve road safety for children and families. These efforts include:

- A further rollout of healthy school street schemes in 2022/23. Major improvements to air quality have been recorded near schools involved in phase 1 and 2 of the rollout. These schemes have been widely supported by pupils, parents, teachers and residents.
- Tackling rat-running with Low Traffic Neighbourhoods. This means prioritising local communities and stopping residential areas being used as cut-throughs for commuter and non-residential traffic; and better public spaces to encourage more social and community activities on the people-friendly streets created.
- The continued investment in enabling and encouraging sustainable travel, through improvements to walking and cycling routes like Mitchell Walk and the Greenway.
- Supporting cycle journeys through the continued rollout of on-street residential cycle hangars and cycle hire stations, and also continuing our free cycle training offer for residents of all ages and abilities.

This strategy builds on our existing work developing Low Traffic Neighbourhoods in the borough. So far six experimental schemes have been implemented. After a period of data collection, analysis and public engagement a decision has been made to convert three permanent schemes, with a potential to include more in the future.

Electric Charging Points

One of the key pillars of sustainable transport are sustainable cars. Our role here is to support resident switch to these vehicles by rolling out the necessary infrastructure. The Council is rapidly expanding the number of electric vehicle charging points throughout Newham to help tackle poor air quality and create a cleaner and greener borough.

Last November, the Council unveiled 80 new on-street electric charging points and is today announcing a further 60 lamp column charging units, to help support the transition of our residents and businesses to electric vehicles.



Discussions are also ongoing with potential funders and charge point operator partners to speed up this programme of delivery, with the potential for a further 500 chargers being delivered by the end of 2024, bringing the total electric vehicle points to around 640. In addition to the 'home charging' electric vehicle points, the Council is also aiming to deliver further 20 rapid charger sites along main roads and at main destinations within the borough to make it easier for electric vehicle drivers to top up.

TRANSPORT AND AIR QUALITY:

School Street Schemes

We want to make sure that children breathe cleaner air, are safe from cars, not only at the school gate, but on the streets in which they live. Children ought to be able to learn, travel, and play without their health being damaged by poor air quality.

Our Healthy School Streets programme provides a series of interventions outside of schools to improve air quality and encourage more families to make journeys to school on foot or by bike. This means working with schools to improve the environment our children live and breathe in. It can mean more plants and trees near schools, or it can mean limited road closures.

The first phase was done, initially as a trial at five schools (Lathom Junior School, Chobham Academy, West Ham CoE Primary School, Godwin Junior School and Woodgrange Infant School), and were made permanent in 2021. Building on the success of phase one, we expanded the scheme to include eight more schools, and then with phase three we are expanding to an additional 11 schools. We are developing a phase four list of schools, which will protect even more of our young people from the harmful impacts of air pollution.

The impact of the Health School Streets programme has been impressive. On average across all sites display the following post scheme reductions thus far:

- 29% reduction in NO₂ pollution during school hours
- 31% reduction in morning drop off periods
- 20% reduction in afternoon pick up periods
- 19% reduction in particulate matter 10 micrometres in diameter (PM₁₀), and
- 25% reduction in particulate matter 2.5 micrometres in diameter (PM_{2.5})

Net-Zero Schools

Working with partners in the borough, we have developed an exciting pilot program, Net Zero Schools. This supports pupils to take action to reduce carbon emissions, enabling them to become green champions with the skills and aspirations to inspire change in their school and communities. In addition, it aids teachers to implement whole school actions to tackle climate change, including their syllabus and operational changes to reduce their own emissions and achieve net zero. Finally, it supports a parent group to run community events that turn the school into a learning hub for the entire community.

This project will begin in September. Our goal is to expand this project across the borough, encouraging other schools to follow and establish themselves as leaders in the efforts to tackle the climate emergency.



TRANSPORT AND AIR QUALITY:

Greener Together

London Borough of Newham is proud to have collaborated with Greener Together. Greener Together is a programme made in partnership with the residents of Alma Street and neighbourhood streets. This project aims to help residents save money, live healthier, learn new skills and create more green space for neighbours to enjoy. This project has delivered a wildflower garden, a Breathe London air quality monitor, and work on anti-social behaviour.

Formula E

In 2021, Newham had the good fortune to hold the ABB FIA Formula E World Championship. This gave us the opportunity to promote clean air and green technology. The World Championship will be hosted in Newham for a number of years. The advent of the Championship in Newham is also set to create jobs, especially in the recovering hospitality sector in which so many people lost their jobs during the pandemic.

Formula E will promote Electric Vehicle technology and innovation. We fully expect it will increase the uptake of electric cars in the borough and inspire young people to go into the sport, as well as exciting them about innovation and sustainability.

Greening Our Vehicle Fleet:

One of our key objectives as an organisation is to ensure that we have a pathway to net-zero. One of the challenges here is ensuring our own vehicle fleet is fully electric. This will not only substantially reduce emissions but improve the air quality and the health of our residents. To ensure the transition between combustible fuel and electric is met, we have a robust plan to either electrify our vehicle fleet or move away from diesel as a fuel by 2030.

Already, the Council's Fleet now consists of 39 fully electric vehicles. Further vehicle procurements are being carried out with an initial review of whether electric vehicles are fit for purpose and practically possible. We have also replaced our existing van fleet with 142 hybrid vehicles. We have also replaced our existing van fleet with 135 mild hybrid vehicles. Although they are not fully electric we have specified fully electric bin lifting equipment, that will both reduce fuel usage and noise levels.

We understand that reducing emissions isn't simply a matter of buying newer and better technology, but also supporting this technology and developing behaviour change. We have therefore installed additional charging units in our Folkestone Road Depot. Our Green Fleet Management will identify and rectify driver behaviour, areas such as carbon footprints, idling, and speeding will be monitored for all council vehicles. This will be achieved through a telematics system that is within the specification of all new vehicles. Finally, fleet services have been accredited 'Clean Van Commitment' and pledged to Engine Off.



RESIDENT ENGAGEMENT:



Putting people at the heart of everything we do means ensuring our residents have a say on Council policies. That's why when we held a Citizens' Assembly back in 2020 to determine our Climate Emergency response. We have expanded on this with our neighbourhood assemblies, which give residents direct influence to create a shared vision for the place where they live, work or learn and to help shape its development and growth. Each neighbourhood has been allocated approximately £100,000 funding to spend on improving the area.

Examples of themes emerging from our neighbourhood assemblies include:

- Various planting projects adding street planters and planting beds in Manor Park, Forest Gate, Wanstead Park, Plaistow Park, East Ham Nature Reserve, Custom House & Canning Town
- Community garden projects were initiated in Manor Park, Green St, East Ham, Beckton, Plaistow and a community forest has been created at Cody Dock in Canning Town.
- The Living Wall project will be a vertically installed nature wall near to Manor Park rail station. It will be made from 100% recycled materials and will feature air purifying plants.
- Tree planting along Romford Road and Green Street
- Urban gardening workshops run by Rosetta Arts, which encourage residents to grow herbs in urban outdoor spaces
- Pocket parks along Green Street and in Plaistow. These are areas with high levels of traffic so these compact parklets, which take up parking/street space are designed to calm traffic, encourage cycling, and add greenery to the area.
- Channelsea Islands project have created three floating islands on the Channelsea river, designed to detoxify and oxygenate the air and water and provide a home for invertebrate species.
- 'There is no Planet B' project in Plaistow held crafts workshops with young people and families to encourage upcycling and recycling.

Our aspiration has always been to be a beacon of local democracy, and therefore our citizens' assemblies and community assemblies were the beginning of our journey. Standing Citizens' Assembly: Greening the Borough

This year, we have further advanced this agenda by becoming the first borough in the country to hold a permanent assembly

to help improve resident participation in local democracy. We invited Newham residents to have decided that 'greening the borough' is the issue they want England's first permanent Citizens' Assembly to discuss this summer.

Newham Council wrote to 10,000 households selected randomly inviting them to register for a place on Newham's Citizens' Assembly. Fifty people from those registered to take part have been selected randomly to join the Citizens' Assembly to discuss and recommend ways the Council should help make Newham a better, happier and healthier place to live.

The Assembly's recommendations covered the following themes:

1. Steps to make parks and green spaces safer and more inclusive
2. Ideas to extend collaboration with the community and local businesses to fund and improve green spaces
3. Using digital to get more people developing activities in green spaces
4. Protecting and expanding well-designed accessible green spaces
5. Rewilding areas and increasing biodiversity to re-connect people with nature
6. Maintaining and de-littering green spaces
7. Creating facilities that are comfortable and sustainable
8. Looking at how proposals can reduce the borough's carbon footprint, to help address climate change

Working with residents

We have been involved in a number of community projects which relate to our climate emergency work, including:

- Various planting projects adding street planters and planting beds in Manor Park, Forest Gate, Wanstead Park, Plaistow Park, East Ham Nature Reserve, Custom House & Canning Town
- Community garden projects initiated in Manor Park, Green St, East Ham, Beckton, Plaistow and a community forest created at Cody Dock in Canning Town.
- The Living Wall project, a vertically installed nature wall near to Manor Park rail station, made from 100% recycled materials and featuring air purifying plants.
- Tree planting along Romford Road and Green Street
- Urban gardening workshops run by Rosetta Arts, to encourage residents to grow herbs in urban outdoor spaces
- Pocket parks along Green Street and in Plaistow. These are areas with high levels of traffic so these compact 'parklets', which take up parking/street space are designed to calm traffic, encourage cycling, and add greenery to the area.
- Channelsea Islands project have created three floating islands on the Channelsea river, designed to detoxify and oxygenate the air and water and provide a home for invertebrate species.
- 'There is no Planet B' project in Plaistow held crafts workshops with young people and families to encourage upcycling and recycling.

RESIDENT ENGAGEMENT:

15 Minute Neighbourhoods

Our second standing assembly topic was 15-minute neighbourhoods. Fifty residents gathered online over 27 hours of sessions, to hear 37 speakers, and they went on five neighbourhood tours. The purpose of this was to discuss: "How can we make sure our local neighbourhoods are vibrant communities where people can work, meet, shop, and access the everyday services they need within a 15-minute walk or cycle from home."

The vision of the participants is:

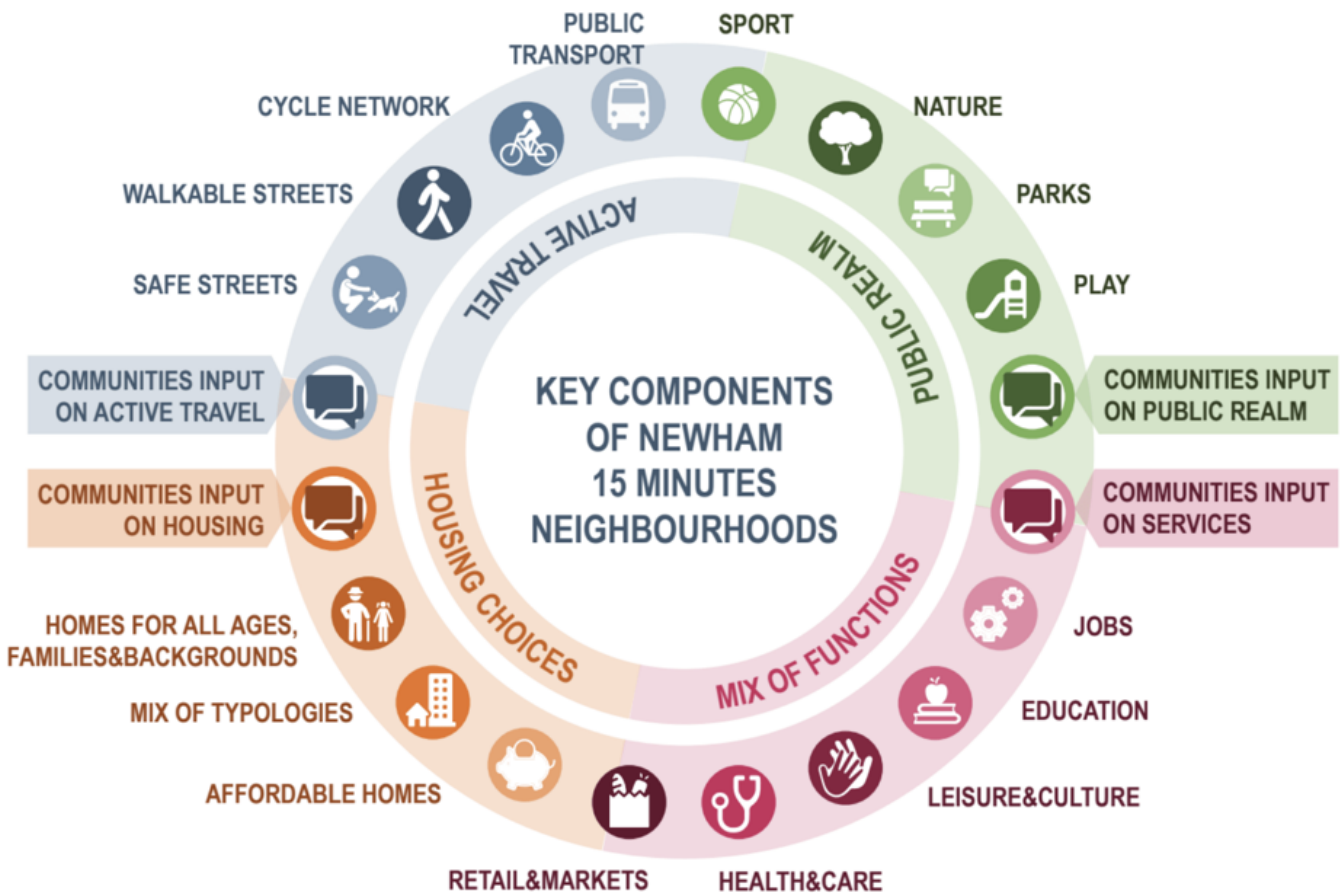
'A 15-minute neighbourhood will have accessible and inclusive transport links that are sustainable long term, allowing people who live in the borough to access the everyday services they need via cycling, walking and other forms of public transport that is inclusive of the needs of residents and affordable. Clean streets and neighbourhoods will make people feel pride in the area and motivated to keep it well maintained.'

The neighbourhood will have effective waste collection systems to avoid fly-tipping, especially of large and bulky items, plenty of well-managed street bins, increased recycling facilities and a sustainable approach which will be effectively enforced through the environmental health and inspection systems.

The recommendations and suggested actions are grouped into 7 areas:

1. Housing
2. Local Businesses & Employment
3. Infrastructure, Maintenance & Cleanliness
4. Transport & Connectivity
5. Fairness, Inclusivity & Accessibility
6. Safety
7. Young People

Participant recommendations came with a clear climate emergency lens. There was a strong emphasis on sustainable travel, well maintained public spaces, and good quality work. These recommendations will be presented to Full Council in June, and responded to by the Council later in the summer of 2022.



COP 26

WE TAKE ACTION.

WE ARE NEWHAM.



COP 26

The Conference is the Conference of the Parties (known as COP 26) to accelerate action towards the goals of the Paris Agreement and the UN Framework Convention on Climate Change. It brought together leaders from all over the world to look at the pressing issue of our time - how humanity can take action to protect the environment and combat climate change to avert and hopefully reverse the huge detrimental environmental impact of climate change.

Throughout the COP 26 period we highlighted the measures that we have taken and suggested things that we can do together as a community to support the environment, whether it's questioning the ways that we travel, not idling our cars, recycling, being efficient with resources – and how we heat our homes - the world's focus is on this crucial issue that affects us all.

Over the two weeks, we put forward to the government a series of additional actions the Government simply needs to implement. These were based on supporting our existing initiatives on the climate emergency, as well as being provided with sufficient resources address this crisis.

Youth Climate Action in Newham

Our aim as a Council is to make Newham the best place for a child and young person to grow up, be safe and provide the environment and support for them to reach their full potential. We put young people at the very heart of everything we do, and this means young people having a meaningful say in the issues that impact them most.

Last year we held a vibrant youth climate assembly in which has resulted in a number of exciting follow up projects. This involved working with local artists, Ada Jusic, to produce a mural bringing together some of the key themes discussed. Three key projects have been progressed, all of which link strongly to the climate emergency agenda.

The first project helps ensure can access parks and leisure spaces in the borough, and feel more connected to these spaces. This is delivered through “Gr8 Day 2 Play!” quarterly leisure events, who provide a specific focus on SEND young people.

The second project delivered a Youth Citizen's assembly looking at the future of employment in the borough. One of the issues raised by young people was that without employment and job security, they could not make climate change a priority. Working with young people from across the borough, the assembly set out what they felt employees should prioritise in new jobs created. Representatives from employers in the borough, and Our Newham were there to take on board the comments, and also to feedback young people's thoughts.

The third key project is the Eco-Warriors handbook, tying many of the other ideas together. This is climate emergency and social action project where young people use immersive technology (Augmented Reality and Virtual Reality) to create a digital interactive handbook allowing young people in Newham to engage in tackling climate change and visualise solutions locally.

The Eco-Warriors handbook project has involved young people developing a series of action days to highlight different aspects of Climate Change locally. This has included planning an event to bring together a range of international experts and youth activists to speak and answers questions from young people in Newham. They have also looked at creative local interventions, such as guerrilla gardening, to help young people connect with and re-wild unloved green areas in the borough. They will also join a workshop by an artist promoting the reuse of waste materials into objects for our homes. This workshop will be delivered with the V&A at Stratford Youth Zone.

NEXT STEPS

Developing the Action Plan

The Climate Emergency Action Plan was developed to capture those actions that were within the immediate grasp of the Council to deliver and take us forward in the right direction toward carbon neutrality, and significant progress has been made. However, these actions alone will not take us all the way to our goals. The plan needs to be developed and provide us with a way of measuring the impact of the actions we take. The Council is now working to develop the next steps in the action plan, taking a quantitative approach to understanding how far we have to go to meet our carbon reduction goals and what further actions we need to take to get there, and what the challenges may be.

A first step is to understand what we need to do, and where we are. This means we need to quantify a carbon baseline - that is the current carbon output (Carbon Tonnes) of all the activities within the Council's direct control, and a 'root to branches' review of everything we do. Once we understand the source and volume of these Carbon Tonnes we will be able to develop a range of actions and options, that we can measure, that take the Council on path to carbon zero and make sustainability a part of everything the council does.

These actions will come at a financial cost and the council will need ensure it delivers value for money in pursuing these ambitious goals whilst continuing to deliver core services to residents within the constraints of a balanced budget. By costing each action/option and understanding the carbon tonne impact we can make informed evidence based decisions that will deliver the biggest Carbon Tonne reduction per £pound and enable the council to set a green and financially sustainable budget. We will also be armed the knowledge and evidence to lobby for the additional funding and policy directives that will be required from central government to enable us to get over the line, and to influence carbon reduction in the borough as a whole outside of the Council's own controllable operations.

Looking forwards – A fairer, greener Newham:

We will be stepping up our actions across the council, to deliver our climate goals, and in line with the work we are

doing to better track and measure our progress, as outlined above, and what we need to do. This will include:

- **Embedding Climate Emergency in our work and Climate Budgeting.** We are developing the Council's first ever Green Budget this coming year which will help us build our response to the Climate Emergency across all aspects of our work in the Council to achieve net zero by 2045. Developing a **Climate Budget** during the coming year, that looks at how we can link put our policies into effect, towards meeting our climate emissions targets, and on a financially sustainable footing.
- **Shaping a fairer, greener economy.** Future plans to invest the £40m of funding won from the government, will include delivering some 4.7k of new walking and cycling routes through the borough. Plans are afoot to develop Stratford as the borough's first Green Zone by 2024, as part of delivering the new jobs and high quality training, and something to roll out across the borough during this term. A gold standard across the council's Adult and Skills Learning Hubs will help support and inspire people to access those career opportunities in the green economy, as part of ensuring the just transition to carbon zero.
- **More action on air quality and sustainable travel.** We will continue to keep working with residents to make their roads less polluted, safer and cleaner, and accessible to all. This will include continuing Healthy School streets around schools and low traffic neighbourhoods. We will also consult and work with residents to identify residential roads and areas in the borough that are affected by dangerous driving, rat-runs and traffic congestion to design schemes to make these roads safer, quieter and healthier for all our residents, including wheelchair users and those with visual impairments and disabilities. We will be encouraging healthier travel through a range of further actions, including at least a further 1000 Electric Vehicle charging points across borough, 500 more cycle hangars and an expansion of cycle hire scheme and working with TfL to expand cycling facilities, including good quality cycle provision for Romford road and Barking Road. We will continue the greening of the council's vehicle fleet, aiming for 50 per cent vehicles clean by 2026 and a target of 100 per cent by 2030.



NEXT STEPS

- **A greener, cleaner Newham.** Ensuring cleaner, greener neighbourhoods will remain a crucial priority, linked to our climate goals, and this will include a further £40m investment in tackling fly tipping and littering to keep our streets and neighbourhoods clean. We will encourage more recycling through a 50 percent increase in recycling opportunities across our neighbourhoods. In particular, we will introduce a food waste recycling pilot scheme to reduce methane gas and support Newham's circular economy. We will continue to plant more trees, encourage greater recycling through more investment in this area. We will look to continue to improve our parks so that at least 10 parks are recognised and awarded the nationally recognised Green Flag by 2026. At a more local level, we will work with residents and local community groups to deliver more community gardens, with at least one community garden in each of the borough's neighbourhoods.

- **Greener homes plans.** We will continue our work in terms of the work in investing further in transforming our own council stock, across our estates, and in the way we build new homes, to ensure the highest sustainable standards. This will include pressing the government for the resources needed for the work that is required. In the private sector we will continue to work with good landlords, who offer decent standards and energy requirements and challenge those others who fail to meet the required standards for thermal efficiency. We will be looking at innovations, such as roof-space development schemes.

- **People powered and working with our Young People.** We will continue to work with residents including through our Citizens' Assemblies and our Youth Assembly, to widen participation in how we take forward this vital work.



www.newham.gov.uk